

# Wind power supply circuit for mining base station





## Overview

---

Who designs mining power systems?

Traditionally, mining power systems have been designed by engineering companies (EPCs) and/or mining sector end-users using their knowledge of the industrial process and their experience from previous projects.

What is the biggest trend in mining power system design?

“The biggest trend we see today is the electrification of this fleet, with machine manufacturers modifying their vehicles to become electric, and some even fully autonomous,” Eric Delaunay, technical expert and power system design consultant, leader of the Schneider Electric Mining Power System Competency Centre, told E&MJ.

How does a mining process control system work?

The architecture allows information to be shared between the mining process and the electrical network control, as well as with the asset management systems. The integrated system provides process control engineers with real time information on the MV and LV motor feeder status, energy cost, the electric motor condition, and the START-STOP control.

Why do mines need a digital control system?

Mine power requirements will increase as operations introduce more electrification and expand production to keep up with future demand for metals and minerals, despite the removal of fossil fuels. This power consumption makes digital and automated control systems that can track and manage energy usage and re-charging even more important.”



## Wind power supply circuit for mining base station

---



### [What is Electrical Power Systems in the Mining Industry](#)

Call us at 276-285-3841 Conclusion In conclusion, electrical power systems are indispensable to modern mining operations, supporting productivity, safety, and sustainability. Becker Mining ...

### [What are the main components of a mine's ...](#)

May 25, 2025 · A mine's power supply and electrical system are critical for its operations, encompassing a comprehensive network designed to deliver ...



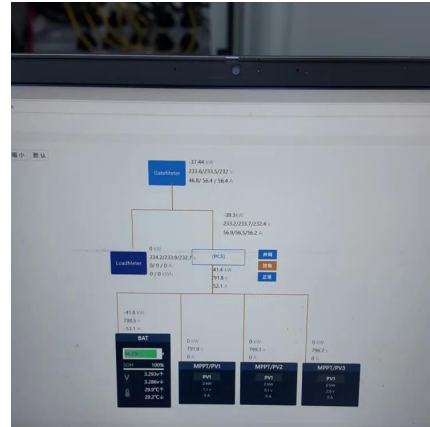
### [Your Paper's Title Starts Here:](#)

Apr 27, 2025 · The sensitivity check of various protections is qualified, so the power supply in the mining area is a complex power supply, and a rigorous selection and power supply layout ...



### [Sustainable operation analysis of the mining ...](#)

Jan 1, 2021 · The paper presents an analysis of operating currents and torques during self-starting of motors with a voltage of 6 kV for cases of ...



### EMJ\_pg28-31 dd

Mar 25, 2024 · At the same time, engineers must design fully optimized power systems that ensure a constant, reliable supply of renewable power to mine operations, either directly from ...



### [Mine Power Systems , Minetek](#)

May 21, 2024 · Mine power systems comprise a wide array of infrastructure and technologies designed to deliver electricity throughout mining sites. ...



### Sustainable operation analysis of the mining industry power supply ...

Jan 1, 2021 · The paper presents an analysis of operating currents and torques during self-starting of motors with a voltage of 6 kV for cases of short circuit in the head feeders from the ...







### What are the main components of a mine's power supply ...

May 25, 2025 · A mine's power supply and electrical system are critical for its operations, encompassing a comprehensive network designed to deliver reliable and efficient power to ...



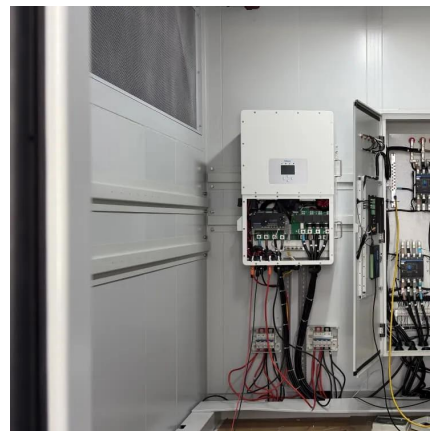
### **MINING POWER SYSTEM**

Jun 17, 2021 · The choice of the power generation and electrical network architecture have a major impact on the total cost of mining power systems and the availability of an electrical ...



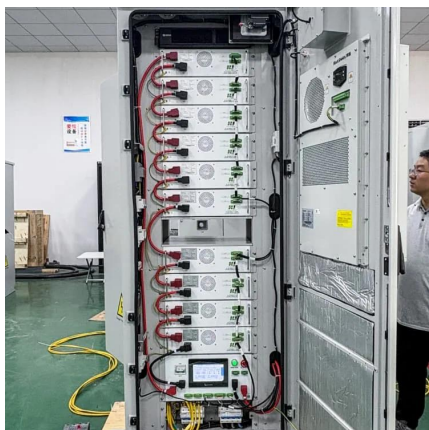
### What is Electrical Power Systems in the ...

Call us at 276-285-3841 Conclusion In conclusion, electrical power systems are indispensable to modern mining operations, supporting productivity, ...



### **Mining**

Excellence in power supply technologies  
Excellence in power supply technologies, high quality raw materials and customisation offer WEG the competitive edge in supplying transformers ...





### Base station wind power supply function

Nov 1, 2025 · Overview The paper proposes a novel planning approach for optimal sizing of standalone photovoltaic-wind-diesel-battery power supply for mobile telephony base stations.

...

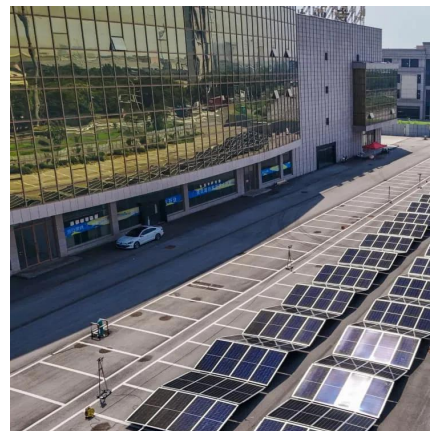


### **Mine Power Systems**

The application of electricity to the mining industry is a distinctive area of both mining engineering and electrical engineering. The difficult environment, the dynamic power loads, the cyclic and ...

### Mine Power Systems , Minetek

May 21, 2024 · Mine power systems comprise a wide array of infrastructure and technologies designed to deliver electricity throughout mining sites. Acting as the lifeblood, they energise ...



## **Contact Us**

For technical specifications, project proposals, or partnership inquiries, please visit:  
<https://www.bukhobuhle.co.za>



## Scan QR Code for More Information



<https://www.bukhobuhle.co.za>