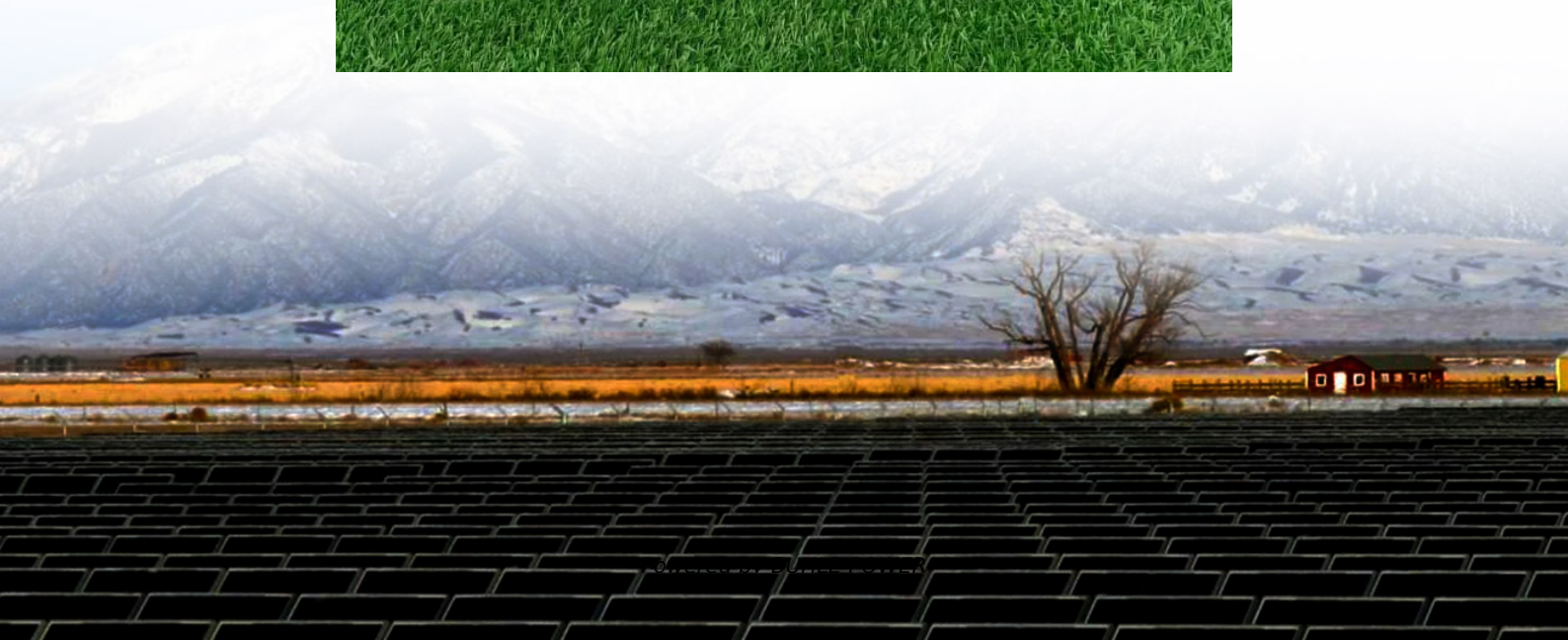


# **Which battery should I use when connecting to an inverter**





## Overview

---

Do inverters and batteries need to match?

The inverter and batteries must match in terms of voltage, capacity, and power output. If you are using a 12V battery, then the input voltage of the inverter must match the battery voltage. If the specifications of the battery and the inverter do not match, the system will not operate stably and may even damage the equipment.

Do inverters need batteries?

For most residential and small commercial setups, the traditional battery and power inverter combo is the preferred choice to ensure continuous power supply during blackouts. So, while some inverter types do not require batteries, if your priority is uninterrupted backup power, investing in a quality battery in inverter system is essential.

Should you connect multiple batteries to an inverter?

For increased power needs, connecting multiple batteries to an inverter is often necessary. Here's how to do it right. When connecting two batteries, they are typically set up in parallel (positive to positive, negative to negative) to increase capacity without changing voltage.

How to connect inverter to battery?

A fuse or circuit breaker should be installed as part of the process of how to connect inverter to battery. Double-check polarity: ensure the positive and negative terminals of the battery match the corresponding terminals on the inverter. Reversing polarity can cause irreversible damage to the system and present safety hazards.



## Which battery should I use when connecting to an inverter

---



### [Ultimate Guide to Battery in Inverter: Choose & Maintain Right](#)

Jul 7, 2025 · Discover how to choose, maintain, and maximize your battery in inverter for reliable backup power. Expert tips on inverter batteries, lifespan, and safety included!

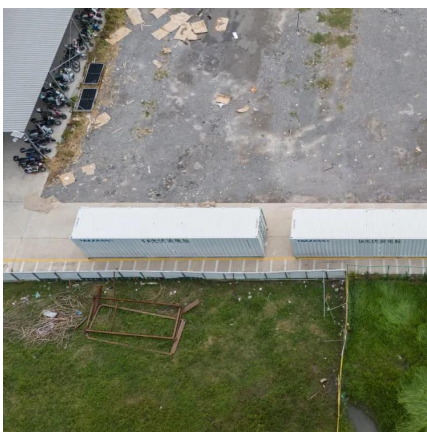
### [How to Wire Inverter to Battery - No Sparks, ...](#)

Jul 18, 2025 · How to wire an inverter to a battery? Connect the inverter's positive and negative terminals to the battery, add a fuse on the positive ...



### [How Do I Match My Battery Size to My Inverter?](#)

Matching your battery size to your inverter is essential for ensuring efficient power usage and preventing system overloads. A well-sized battery will provide adequate energy for your ...



### [How to Wire Inverter to Battery - No Sparks, Just Power](#)

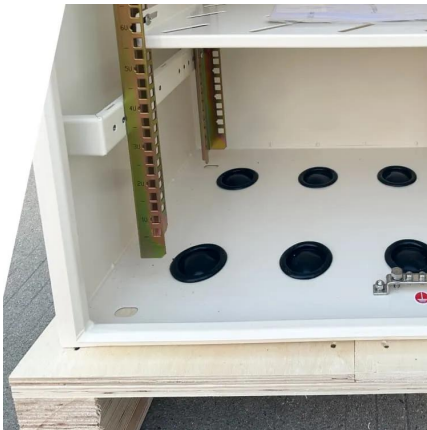
Jul 18, 2025 · How to wire an inverter to a battery? Connect the inverter's positive and negative terminals to the battery, add a fuse on the positive line, and double-check polarity. Key ...





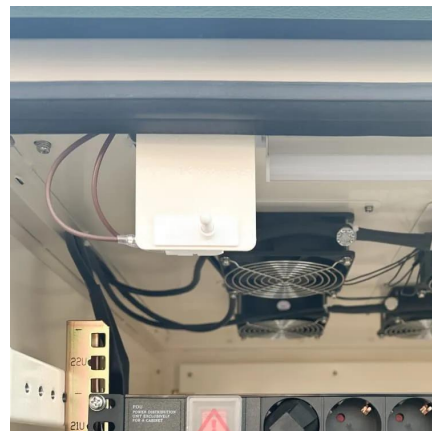
### [Connecting Multiple Batteries to an Inverter: ...](#)

Need more battery capacity on your inverter? Let's look at how to add more batteries and how many batteries you can connect to an inverter.



### [Inverter Battery Connection: Essential Tips For Safe And ...](#)

Learn essential tips for safe and efficient inverter battery connection. Discover step-by-step guides, wiring techniques, and troubleshooting tips to optimize your power backup system's ...



### [How to connect inverter to battery: a step-by ...](#)

Nov 20, 2024 · Battery: The battery should be suitable for your inverter's voltage and power requirements. Common battery types include lead ...





## [Battery Choices for Home Power Inverters: What ...](#)

Sep 19, 2024 · Explore the different types of batteries (lead-acid, lithium-ion, etc.) used with home power inverters. Discuss the pros and cons of each type, their compatibility with various ...

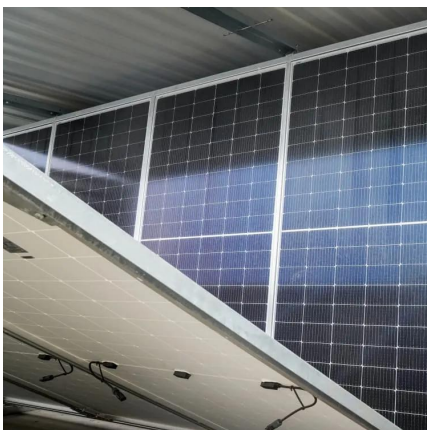


## [Understanding the Basics of Connecting Lithium Batteries to Inverters](#)

Oct 8, 2024 · Lithium batteries are widely used in energy storage systems due to their high efficiency, long life cycle, and light weight. Connecting a lithium battery to an inverter is crucial ...

## [Understanding the Basics of Connecting ...](#)

Oct 8, 2024 · Lithium batteries are widely used in energy storage systems due to their high efficiency, long life cycle, and light weight. Connecting a ...



## [How to Connect an Inverter to a Battery: Step-by-Step Guide ...](#)

Mar 11, 2025 · Learn how to safely and efficiently connect an inverter to a battery with our step-by-step guide. Includes brand-specific tips for Solis, Deye, Megarevo, SRNE, and more. Perfect ...



### [How to Connect an Inverter to a Battery: Step ...](#)

Mar 11, 2025 · Learn how to safely and efficiently connect an inverter to a battery with our step-by-step guide. Includes brand-specific tips for Solis, ...



### [How to Safely Connect a Battery to an Inverter: A Step-by ...](#)

Apr 13, 2025 · Learn how to safely connect your batteries to your inverter with our guide. Avoid common wiring mistakes to optimize performance and extend system life.

### [Inverter Battery Connection: Essential Tips For Safe And ...](#)

Nov 16, 2024 · Learn essential tips for safe and efficient inverter battery connection. Discover step-by-step guides, wiring techniques, and troubleshooting tips to optimize your power ...



### [How to connect inverter to battery: a step-by-step guide for ...](#)

Nov 20, 2024 · Battery: The battery should be suitable for your inverter's voltage and power requirements. Common battery types include lead-acid, AGM, and lithium-ion batteries, all of ...



### [Connecting Multiple Batteries to an Inverter: Easy Guide](#)

Need more battery capacity on your inverter?  
Let's look at how to add more batteries and how  
many batteries you can connect to an inverter.



## Contact Us

---

For technical specifications, project proposals, or partnership inquiries, please visit:  
<https://www.bukhobuhle.co.za>

### Scan QR Code for More Information



<https://www.bukhobuhle.co.za>