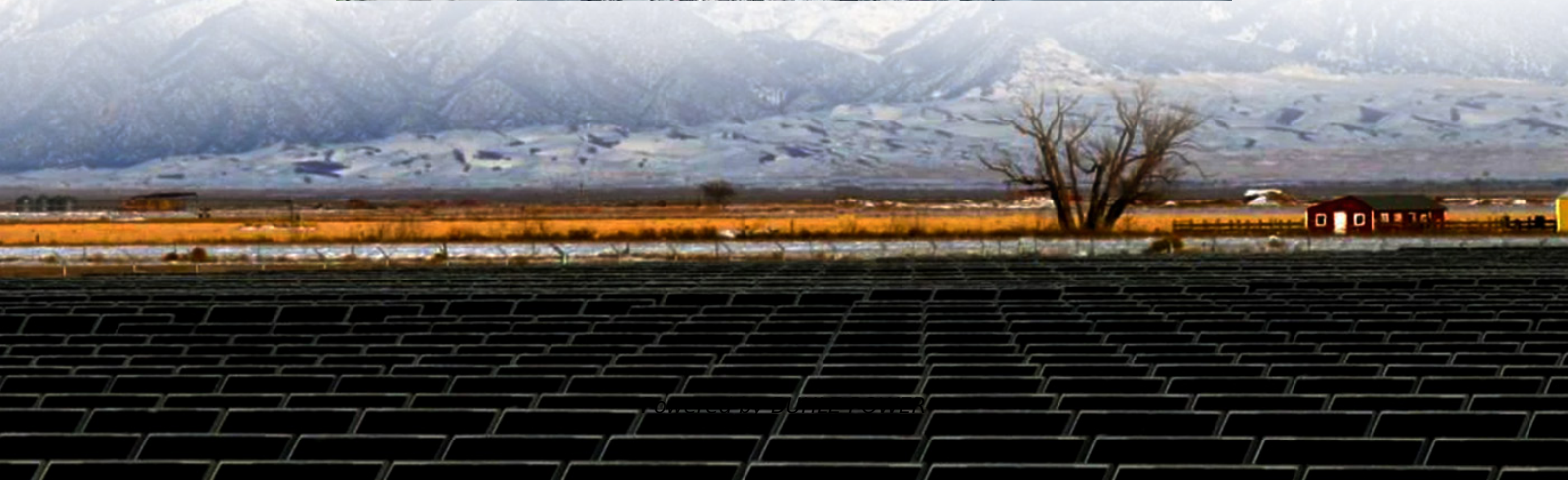


Where are communication signal base stations usually placed





Overview

What is a signal transmission & reception base station?

Signal Transmission and Reception Base stations use antennas mounted on cell towers to send and receive radio signals to and from mobile devices within their coverage area. This communication enables users to make voice calls, send texts, and access data services, connecting them to the wider world.

How do base stations work?

Base stations use antennas mounted on cell towers to send and receive radio signals to and from mobile devices within their coverage area. This communication enables users to make voice calls, send texts, and access data services, connecting them to the wider world. Network Management and Optimization.

What is a base station in a telecommunications network?

A base station is a critical component in a telecommunications network. A fixed transceiver that acts as the central communication hub for one or more wireless mobile client devices. In the context of cellular networks, it facilitates wireless communication between mobile devices and the core network.

Why are base stations important in cellular communication?

Base stations are important in the cellular communication as it facilitate seamless communication between mobile devices and the network communication. The demand for efficient data transmission are increased as we are advancing towards new technologies such as 5G and other data intensive applications.



Where are communication signal base stations usually placed



[What are Base Station in Telecommunications?](#)

Nov 21, 2025 · The Role and Importance of Base Stations Base stations enable voice, data, and internet access. They transmit radio signals within a set area. You stay connected as you ...

[Exploring communication base stations](#)

Dec 18, 2024 · The specific working principles of different types of base stations, such as 2G, 3G, 4G, and 5G base stations, may vary depending ...



[What is a Base Station in Telecommunications?](#)

What Does a Base Station do? Signal Transmission and Reception: The primary function of a base station is to transmit and receive radio signals. It communicates with mobile devices, ...

[What Is A Base Station?](#)

Apr 22, 2024 · A base station is an integral component of wireless communication networks, serving as a central point that manages the transmission and reception of signals between ...



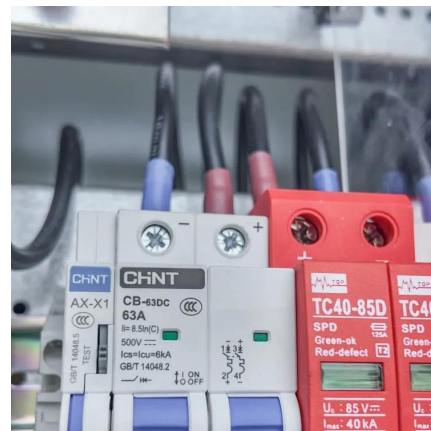
Base stations and networks

5 days ago · Base stations enable mobile communications Mobile phones and other mobile devices require a network of base stations in order to function. The base station antennas ...



What is Telecommunication Base Station , China Hop

Communication base stations are usually composed of the following main components: Antenna feeder system: responsible for signal transmission and reception, including antennas and ...



Base Stations and Cell Towers: The Pillars of Mobile ...

May 16, 2024 · Key Functions of Base Stations and Cell Towers Signal Transmission and Reception Base stations use antennas mounted on cell towers to send and receive radio ...



Cell site explained

A cell site, cell phone tower, cell base tower, or cellular base station is a cellular -enabled mobile device site where antennas and electronic communications equipment are placed (typically on ...



Base stations and networks

Base Stations Enable Mobile Communications
Antennas Are Placed in Various Locations
More Mobile Devices Means More Base Stations
Base Station Output Power Is Low
Exposure Limits Are Set by Independent Organizations
Exposure Levels Are Much Lower Than The Limits
Public Access Is Restricted Where Needed
No Adverse Health Effects According to The Who
The base station antennas are usually placed on rooftops, in masts or on building walls. Antennas are sometimes also installed in shopping malls, airports, offices, and other places with many mobile phone users. Indoor antennas are usually placed on walls or on ceilings. See more on [ericsson Sanny Telecom](#)

What Is A Base Station? - Sanny Telecom

Apr 22, 2024 · A base station is an integral component of wireless communication networks, serving as a central point that manages the transmission and reception of signals between ...

Base Stations

Jul 23, 2025 · The present-day tele-space is incomplete without the base stations as these constitute an important part of the modern-day scheme of wireless communications. They are ...



[What is a Base Station? -- From Communication Core to ...](#)

Aug 19, 2025 · Base stations are the core of mobile communication, and with the rise of 5G, thermal and energy challenges are increasing. This article explains the definition, structure, ...



[Exploring communication base stations](#)

Dec 18, 2024 · The specific working principles of different types of base stations, such as 2G, 3G, 4G, and 5G base stations, may vary depending on the communication technology standards ...



Contact Us

For technical specifications, project proposals, or partnership inquiries, please visit:
<https://www.bukhobuhle.co.za>



Scan QR Code for More Information



<https://www.bukhobuhle.co.za>