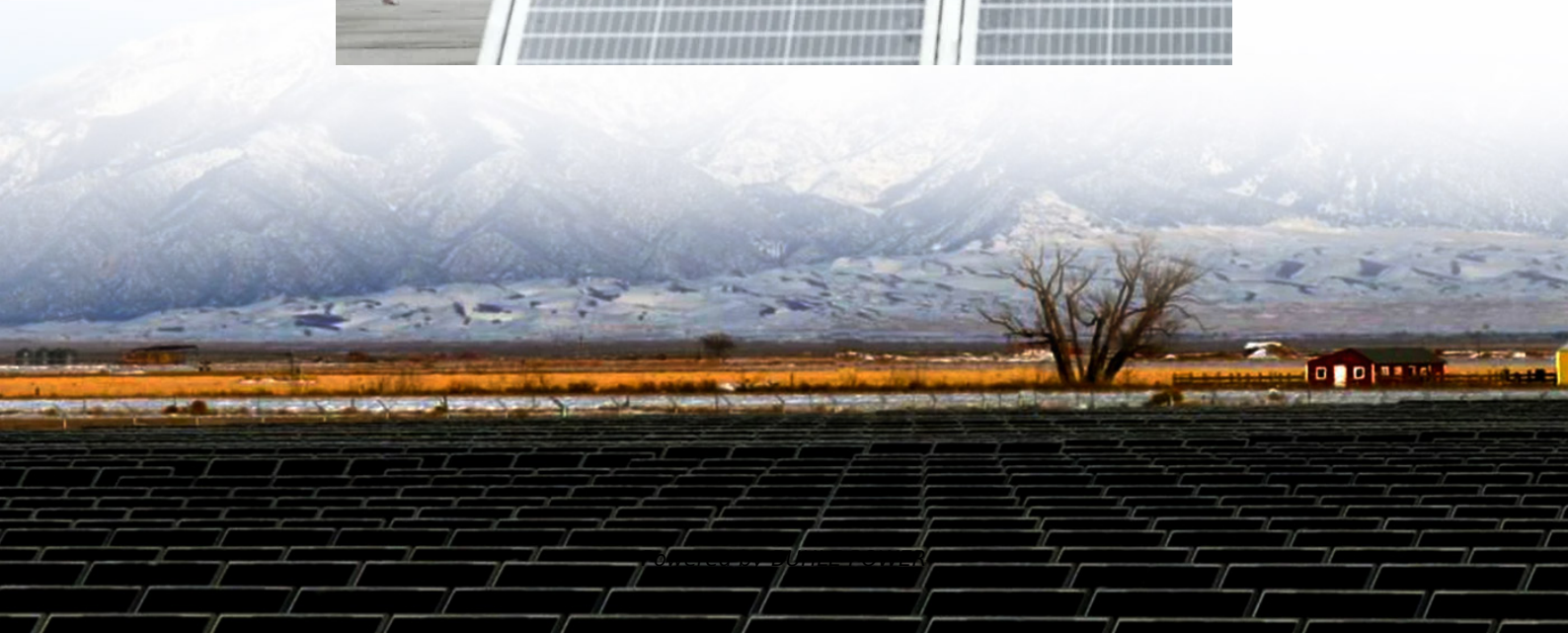


What is the station cabinet in the battery cabinet





What is the station cabinet in the battery cabinet



[at the/in the police station/fire station](#)

Oct 21, 2016 · Well, just to start things off, generally in American English we say the police station, the fire station, the hospital, etc. This is even if we don't have a clue which one is intended.

station announcement

May 18, 2021 · Hallo everyone I have a question (when we are at the station and there is a train announcement) for example The next train to Milan ----- at 7.45 (train announcement) would ...



[petrol/gas/fuelling station: fuelling vs fuel](#)

Jun 6, 2019 · A fuelling station and a petrol station are different things. A petrol station is the place you see every day. They sell petrol, mainly to car owners in their cars. A fuelling station is ...



[auf/an der Station, Haltestelle, WordReference Forums](#)

Nov 6, 2008 · Hallo, bitte, sagt man "auf der Station" oder "an der Station"? Sind beide Möglichkeiten richtig? Und wie ist es mit der "Haltestelle" - ich habe gelernt, dass man nur "an ...



gare / station

Oct 30, 2011 · Bonjour, je me demande depuis longtemps s'il faut superposer "gare" et "station" dans les textes où l'on trouve les deux mots dans la même page. Des fois j'ai l'impression qu'il ...



[railway station or train station? . WordReference Forums](#)

Dec 14, 2011 · A train station (commonly station, railway station (mainly British Commonwealth) or railroad station (mainly US)) is a railway facility where trains regularly stop to load or unload ...



[where is the nearest métro station . WordReference Forums](#)

Aug 27, 2012 · Bonjour! J'essaie de traduire cetttes phrases aussi littéral que possible, mais je veux qu'elles sonnent naturelles et correctes aussi 1. "Could you tell me where the nearest ...





Nurses Station

Apr 17, 2008 · I suppose avoiding it by talking about a Nurse Station, or Nursing Station, is out of the question It's either Nurses' because it is a station used by lots of nurses, or it is Nurses, ...



above one's station.

Dec 15, 2014 · His ideas were above his station. What does this phrase mean? As I know station also means social position. But I don't quite get the meaning of the sentence.

in/at the station

Oct 25, 2013 · Hi, I was wondering which preposition is better in the following sentence because I have seen both options: "The train arrives in Waterloo station at 6:30" or "The train arrives at ...



Contact Us

For technical specifications, project proposals, or partnership inquiries, please visit:
<https://www.bukhobuhle.co.za>



Scan QR Code for More Information



<https://www.bukhobuhle.co.za>