

What is the role of base stations in communications





Overview

What is a base station in a telecommunications network?

A base station is a critical component in a telecommunications network. A fixed transceiver that acts as the central communication hub for one or more wireless mobile client devices. In the context of cellular networks, it facilitates wireless communication between mobile devices and the core network.

Why are base stations important?

Base stations are the backbone of wireless communication networks, playing a pivotal role in signal transmission, network reliability, and high-speed data connectivity. As technology evolves, the importance of base stations will continue to grow, addressing new challenges and supporting the ever-expanding demand for wireless communication services.

Why is a base station important in wireless communication?

A base station is fundamental in wireless communication, because it facilitates the connection between your device and the wider network. Without base stations, mobile data and voice services would be impossible, as there would be no infrastructure to handle the transmission of signals.

What is a base station and how does it work?

A base station is a fixed point of communication between mobile devices and the wider telecom network. It transmits and receives radio signals, enabling your phone to access voice, data, and internet services. Together, thousands of base stations form a seamless web of coverage known as a cellular network. How Does It Work?



What is the role of base stations in communications



[What Is the Role of a Base Station in Wireless Communication?](#)

Jun 27, 2025 · Base stations are the backbone of wireless communication networks, playing a pivotal role in signal transmission, network reliability, and high-speed data connectivity. As ...

[What is a base station?](#)

Mar 4, 2021 · In telecommunications, a base station is a fixed transceiver that is the main communication point for one or more wireless mobile client devices.



[What are Base Station in Telecommunications?](#)

Nov 21, 2025 · The Role and Importance of Base Stations Base stations enable voice, data, and internet access. They transmit radio signals within a set area. You stay connected as you ...



[What is a Base Station? -- From Communication Core to ...](#)

Aug 19, 2025 · Base stations are the core of mobile communication, and with the rise of 5G, thermal and energy challenges are increasing. This article explains the definition, structure, ...



[Understanding Base Stations: The Backbone of Wireless Communication](#)

Jan 6, 2025 · In today's digital age, reliable and high-speed communication is more essential than ever. Whether it's for mobile phones, internet services, or IoT (Internet of Things) devices, ...



[What is a Base Station?](#)

Jan 18, 2022 · Base stations are central hubs of connections in different sectors and support networking, communication, and transmitting data. ...



[What is the purpose of batteries at telecom ...](#)

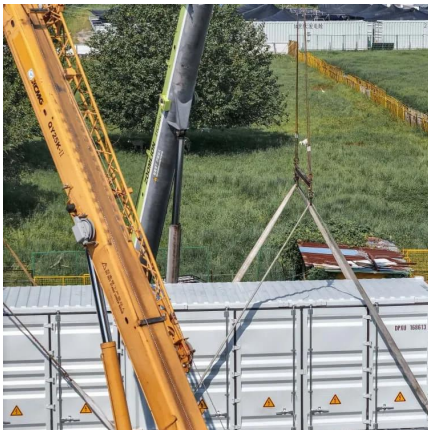
Nov 7, 2025 · Lead-acid batteries: "Backup power station" for telecom base stations Backup power supply for communication base stations, including ...





What Is A Base Station?

Apr 22, 2024 · A base station is an integral component of wireless communication networks, serving as a central point that manages the transmission and reception of signals between ...



Base Station

Let's explore the critical aspects of radio communication and the integral role played by base stations: Transceiver Functionality: Base stations, as transceivers, engage in two-way ...



Base Stations

Jul 23, 2025 · Wireless Communication: Base stations play a fundamental role in establishing and supporting wireless connectivity with mobile devices within their range. Network Coverage: ...



Base Stations and Cell Towers: The Pillars of Mobile ...

May 16, 2024 · Base stations and cell towers are critical components of cellular communication systems, serving as the infrastructure that supports seamless mobile connectivity. These ...



What is a Base Station in Telecommunications?

What is a Base Station? A base station is a critical component in a telecommunications network. A fixed transceiver that acts as the central communication hub for one or more wireless mobile ...



Base Station Controller: Key Role in Mobile Networks

Apr 21, 2025 · The Base Station Controller (BSC) plays a vital role in mobile networks, linking Base Transceiver Stations (BTS) with the Mobile Switching Center (MSC). It handles many ...

Base Station's Role in Wireless Communication Networks

What is the role of software in base stations? Software in base stations plays a key role in managing and optimizing network performance. It controls signal processing, resource ...



What Does a Base Station Do and Why Is It Essential for ...

Sep 5, 2025 · What Is a Base Station? A base station is a fixed point of communication between mobile devices and the wider telecom network. It transmits and receives radio signals, ...



What is the function of a Base Transceiver ...

Nov 8, 2023 · A Base Transceiver Station (BTS) is a fundamental component in a GSM (Global System for Mobile Communications) network, serving ...

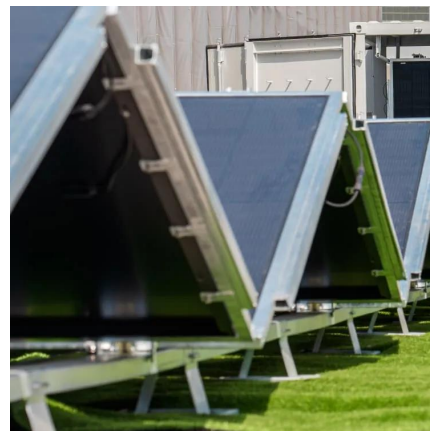


What is a base station?

Mar 4, 2021 · In telecommunications, a base station is a fixed transceiver that is the main communication point for one or more wireless mobile client ...

What Is a Base Station and Its Role in ...

Understanding the integral role of base stations in telecommunications opens up a clearer view of how modern communication is structured and ...



Contact Us

For technical specifications, project proposals, or partnership inquiries, please visit:
<https://www.bukhobuhle.co.za>



Scan QR Code for More Information



<https://www.bukhobuhle.co.za>