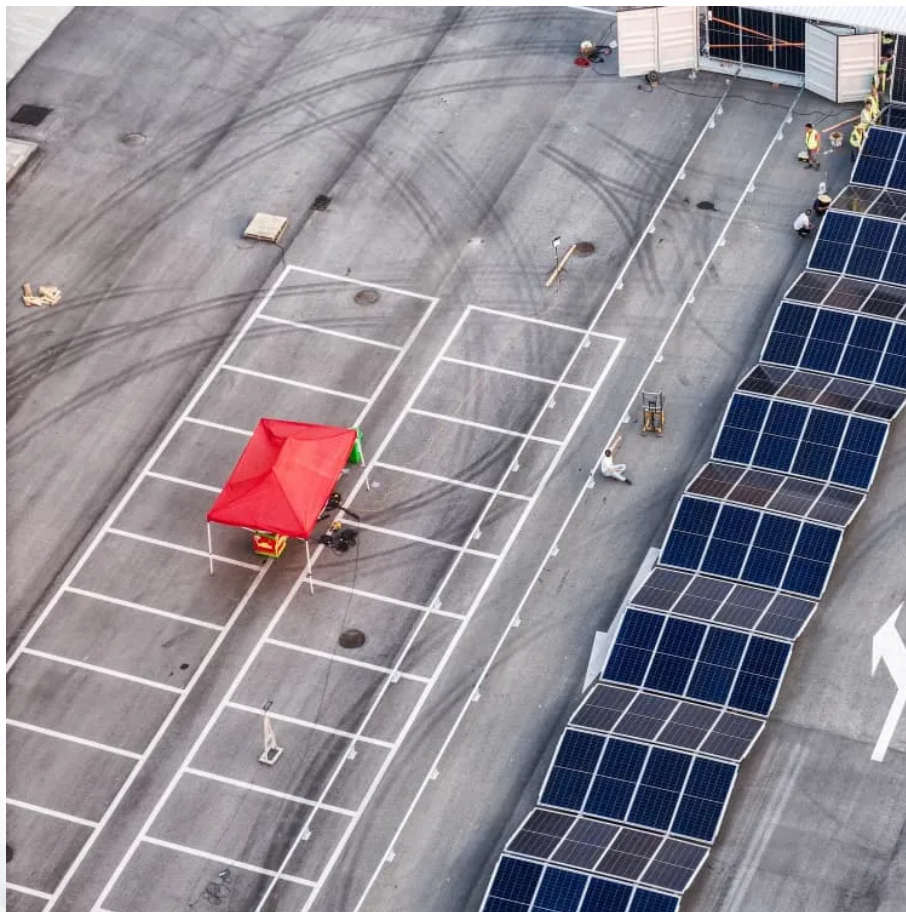


What is the purpose of base station communication equipment





Overview

Why are base stations important?

Base stations are the backbone of wireless communication networks, playing a pivotal role in signal transmission, network reliability, and high-speed data connectivity. As technology evolves, the importance of base stations will continue to grow, addressing new challenges and supporting the ever-expanding demand for wireless communication services.

What is a base station and how does it work?

A base station is a fixed point of communication between mobile devices and the wider telecom network. It transmits and receives radio signals, enabling your phone to access voice, data, and internet services. Together, thousands of base stations form a seamless web of coverage known as a cellular network. How Does It Work?

.

What is a base station in a telecommunications network?

A base station is a critical component in a telecommunications network. A fixed transceiver that acts as the central communication hub for one or more wireless mobile client devices. In the context of cellular networks, it facilitates wireless communication between mobile devices and the core network.

Why are base stations important in cellular communication?

Base stations are important in the cellular communication as it facilitate seamless communication between mobile devices and the network communication. The demand for efficient data transmission are increased as we are advancing towards new technologies such as 5G and other data intensive applications.



What is the purpose of base station communication equipment



[Introduction of base station and Remote ...](#)

Jul 22, 2022 · Base Station, generally refers to the "public mobile communication base station", (abbr.: BS), the base station is used to ...

[What Is a Base Station? Definition and How It Works](#)

Oct 10, 2025 · A base station is a fixed transceiver that serves as the central communication point for mobile devices within a defined geographical area, known as a cell. It is sometimes called ...



[Base Station's Role in Wireless Communication Networks](#)

A base station is the component of the network that handles communication between devices and the network, while a cell tower is the physical structure that houses the antennas and ...

[Understanding Base Stations: The Backbone of Wireless Communication](#)

Jan 6, 2025 · Whether in the form of large macro stations or tiny small cells, base stations will continue to evolve, providing the foundation for next-generation communication technologies ...



What is a Base Station Cabinet

May 9, 2025 · A base station cabinet protects telecom equipment, ensures stable power, cooling, and security, and supports 4G, 5G, IoT, and ...



What is a base station?

Mar 4, 2021 · In telecommunications, a base station is a fixed transceiver that is the main communication point for one or more wireless mobile client devices.



What Are Base Station Antennas? Complete ...

Nov 20, 2024 · In modern telecommunications systems, the base station antenna stands out as an undeniable and crucial component to facilitate ...





[What is a Base Station? A Complete Beginner's Guide](#)

Oct 10, 2025 · Frequently Asked Questions What is the typical range of a base station? The range of a base station varies significantly depending on its type, power output, and environmental ...



Base Station

A base station is a radio receiver which may have one or multiple antenna. It was first used in mobile telecommunication networks. The base station is responsible for maintaining ...

[What Is the Role of a Base Station in Wireless Communication?](#)

Jun 27, 2025 · Base stations are the backbone of wireless communication networks, playing a pivotal role in signal transmission, network reliability, and high-speed data connectivity. As ...



[What is the purpose of batteries at telecom ...](#)

Nov 7, 2025 · Lead-acid batteries: "Backup power station" for telecom base stations Backup power supply for communication base stations, including ...



Base Stations

Jul 23, 2025 · The present-day tele-space is incomplete without the base stations as these constitute an important part of the modern-day scheme of wireless communications. They are ...

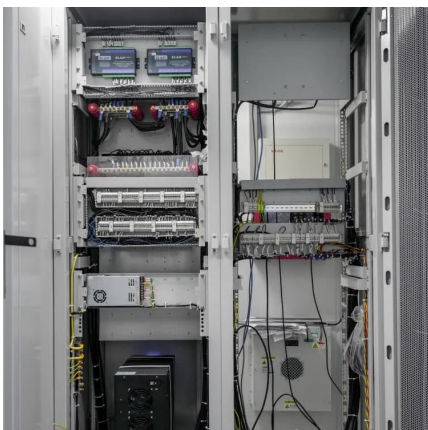
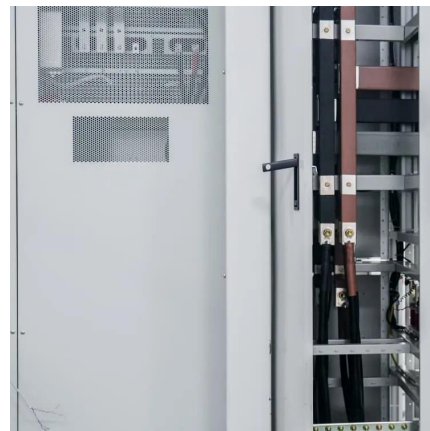


Base Station

Dec 1, 2024 · A base station is a device that serves as the hub of a wireless communication system. It is typically responsible for transmitting and receiving signals to and from mobile ...

[BTS \(base station transceiver\)](#)

Mar 6, 2023 · BTS, or Base Station Transceiver, is a critical component in modern mobile communication networks. BTS is responsible for ...



[What Is A Base Station?](#)

Apr 22, 2024 · A base station is an integral component of wireless communication networks, serving as a central point that manages the transmission and reception of signals between ...



What Does a Base Station Do and Why Is It Essential for ...

Sep 5, 2025 · A base station is a fixed point of communication between mobile devices and the wider telecom network. It transmits and receives radio signals, enabling your phone to access ...



What are Base Station in Telecommunications?

Nov 21, 2025 · The Role and Importance of Base Stations Base stations enable voice, data, and internet access. They transmit radio signals within a set area. You stay connected as you ...

What is a Base Station in Telecommunications?

What is a Base Station? A base station is a critical component in a telecommunications network. A fixed transceiver that acts as the central communication hub for one or more wireless mobile ...



Contact Us

For technical specifications, project proposals, or partnership inquiries, please visit:
<https://www.bukhobuhle.co.za>



Scan QR Code for More Information



<https://www.bukhobuhle.co.za>