

What is the maximum power supported by the inverter





Overview

What are the two most important aspects of inverter size?

The two most important aspects of inverter size are continuous power rating and maximum power. Continuous power rating or continuous rating indicates the maximum power the inverter can provide without experiencing a drop in performance or overheating over an extended period of time.

What are inverter specifications?

Specifications provide the values of operating parameters for a given inverter. Common specifications are discussed below. Some or all of the specifications usually appear on the inverter data sheet. Maximum AC output power This is the maximum power the inverter can supply to a load on a steady basis at a specified output voltage.

How much inverter power can a car battery support?

There is a theoretical limit to the amount of inverter power that can be supported by an automotive battery. Theoretically, the maximum supported inverter power can be calculated by multiplying the battery capacity (Ah) by the battery voltage (V) multiplied by the discharge multiplier (C-rate).

How much power does an inverter need?

It's important to note what this means: In order for an inverter to put out the rated amount of power, it will need to have a power input that exceeds the output. For example, an inverter with a rated output power of 5,000 W and a peak efficiency of 95% requires an input power of 5,263 W to operate at full power.



What is the maximum power supported by the inverter



[How Big of an Inverter Can My Car Battery Handle?](#)

Mar 26, 2025 · Calculating inverter demand sizing There is a theoretical limit to the amount of inverter power that can be supported by an automotive battery. Theoretically, the maximum ...

[How To Read And Interpret An Inverter Specification](#)

1 day ago · Inverter specifications are technical information that describes an inverter's capabilities, characteristics, and limitations. They guide users in choosing an inverter that suits ...

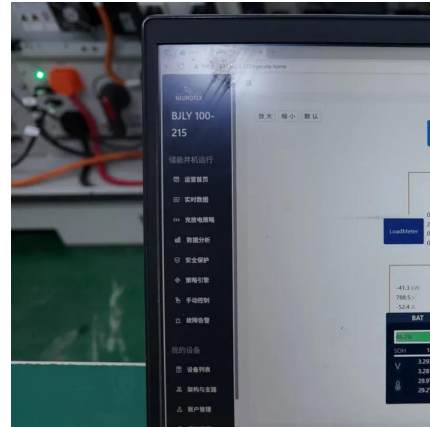


[Maximum Inverter Power Output Calculation . True ...](#)

Dec 11, 2024 · Calculation Example: The maximum possible power output of an inverter is determined by multiplying the DC input voltage by the output current. This assumes 100% ...

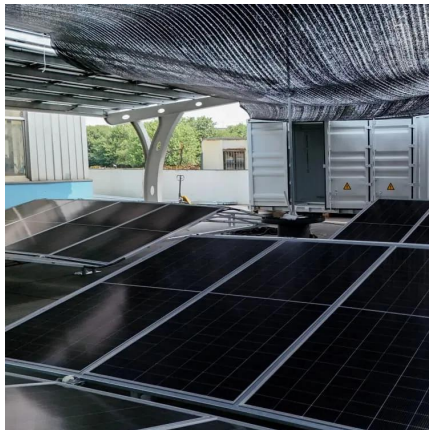
[Inverter Capacity Calculator](#)

Mar 31, 2025 · Inverter Capacity: The maximum load an inverter can handle, measured in watts (W). Power Requirement: The amount of electrical power needed by a device to operate ...



[What Size Inverter Will Run a Home?](#)

Sep 27, 2023 · Maximum power, commonly referred to as surge power or peak power, reflects the inverter's ability to supply peak power above its ...



[How Big of an Inverter Can My Car Battery ...](#)

Mar 26, 2025 · Calculating inverter demand sizing There is a theoretical limit to the amount of inverter power that can be supported by an automotive ...



[Nominal and maximum power of an inverter: Are they the ...](#)

Sep 20, 2023 · Nominal power vs. maximum power: which value should i provide to the seller? As you may have noticed, nominal power and maximum power are not the same and have ...





[Inverter Specifications and Data Sheet](#)

1 day ago · The article provides an overview of inverter functions, key specifications, and common features found in inverter systems, along with an example of power calculations and inverter ...



[Datasheet , QT2 3-Phase Microinverter](#)

Mar 24, 2023 · With balancing 3-phase output, 4 DC inputs and encrypted ZigBee wireless, installers and system owners alike benefit from new QT2 architecture platform. The innovative ...

[What Size Inverter Will Run a Home?](#)

Sep 27, 2023 · Maximum power, commonly referred to as surge power or peak power, reflects the inverter's ability to supply peak power above its continuous rating for a short period of time.



[How To Read And Interpret An Inverter ...](#)

1 day ago · Inverter specifications are technical information that describes an inverter's capabilities, characteristics, and limitations. They guide users in ...



Definitions of Inverter Specifications

Global MPPT support: Feature which ensures maximum power harvest under shading or complex conditions by finding the global maximum power point instead of a local one. Optimizer ...



Nominal and maximum power of an inverter: ...

Sep 20, 2023 · Nominal power vs. maximum power: which value should i provide to the seller? As you may have noticed, nominal power and ...

Contact Us

For technical specifications, project proposals, or partnership inquiries, please visit:
<https://www.bukhobuhle.co.za>

Scan QR Code for More Information



<https://www.bukhobuhle.co.za>