

# What does communication between base stations mean





## Overview

---

What is a base station in a telecommunications network?

A base station is a critical component in a telecommunications network. A fixed transceiver that acts as the central communication hub for one or more wireless mobile client devices. In the context of cellular networks, it facilitates wireless communication between mobile devices and the core network.

Why is a base station important in wireless communication?

A base station is fundamental in wireless communication, because it facilitates the connection between your device and the wider network. Without base stations, mobile data and voice services would be impossible, as there would be no infrastructure to handle the transmission of signals.

What is a base station and how does it work?

A base station is a fixed point of communication between mobile devices and the wider telecom network. It transmits and receives radio signals, enabling your phone to access voice, data, and internet services. Together, thousands of base stations form a seamless web of coverage known as a cellular network. How Does It Work?

.

Why are base stations important?

Base stations are the backbone of wireless communication networks, playing a pivotal role in signal transmission, network reliability, and high-speed data connectivity. As technology evolves, the importance of base stations will continue to grow, addressing new challenges and supporting the ever-expanding demand for wireless communication services.



## What does communication between base stations mean

---



### Base Station

A base station is a radio receiver which may have one or multiple antenna. It was first used in mobile telecommunication networks. The base station is responsible for maintaining ...

### [Baseband Unit \(BBU\): What Does BBU Mean?](#)

Jul 3, 2024 · What does BBU mean? Learn everything about baseband unit (BBU) and its importance in telecommunications from this blog.



### [What Is A Base Station?](#)

Apr 22, 2024 · A base station is an integral component of wireless communication networks, serving as a central point that manages the transmission and reception of signals between ...



### [Understanding Base Stations: The Backbone of Wireless Communication](#)

Jan 6, 2025 · In today's digital age, reliable and high-speed communication is more essential than ever. Whether it's for mobile phones, internet services, or IoT (Internet of Things) devices, ...



### [What Is a Base Station? Definition and How It Works](#)

Oct 10, 2025 · The modern world relies on seamless wireless communication, supported by an extensive infrastructure. This infrastructure allows billions of mobile devices to connect ...

## **Base Stations**

Base stations are key components in mobile communication networks. They are fixed points that connect mobile devices, like smartphones and tablets, to the wider communication network. ...



### [What Is the Role of a Base Station in Wireless Communication?](#)

Jun 27, 2025 · Base stations are critical components in wireless communication networks, serving as the intermediary between mobile devices and the core network. They play a vital role in ...







### What Is the Role of a Base Station in Wireless Communication?

Jun 27, 2025 · Base stations are the backbone of wireless communication networks, playing a pivotal role in signal transmission, network reliability, and high-speed data connectivity. As ...

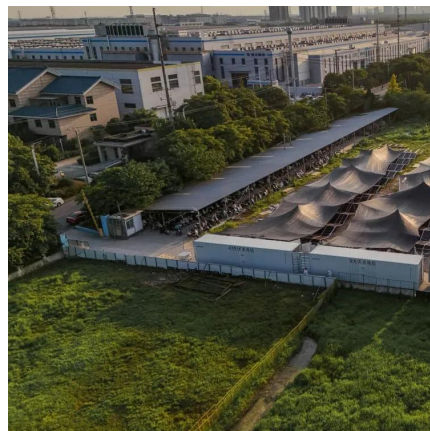


### What is a base station?

Mar 4, 2021 · In telecommunications, a base station is a fixed transceiver that is the main communication point for one or more wireless mobile client ...

### Understanding Wireless Base Stations: ...

Sep 8, 2023 · Basic technical terminology Before we delve deeper into the intricacies of cellular base stations, let's familiarize ourselves with some ...



### What are Base Station in Telecommunications?

Nov 21, 2025 · The Role and Importance of Base Stations Base stations enable voice, data, and internet access. They transmit radio signals within a set area. You stay connected as you ...



### What is a Base Station?

Jan 18, 2022 · Base stations are central hubs of connections in different sectors and support networking, communication, and transmitting data. ...

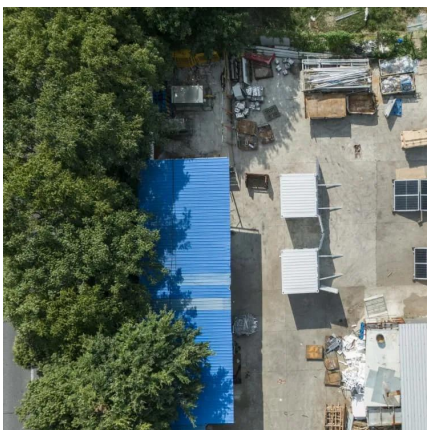


### **Base Stations**

Jul 23, 2025 · The present-day tele-space is incomplete without the base stations as these constitute an important part of the modern-day scheme of wireless communications. They are ...

### Cell sites and cell towers in a mobile cellular ...

Nov 17, 2019 · A picture of a cell tower at a cell site Cell site means the location where a cell tower is installed A cell site is a location or "site" ...



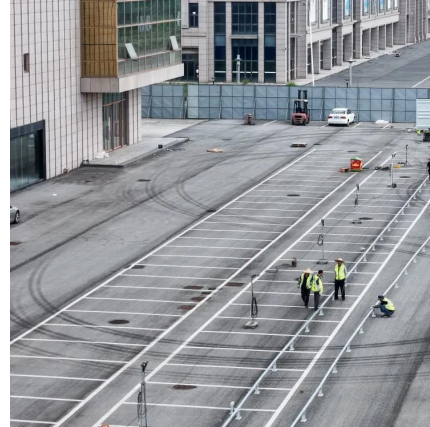
### What Does a Base Station Do and Why Is It Essential for ...

Sep 5, 2025 · A base station is a fixed point of communication between mobile devices and the wider telecom network. It transmits and receives radio signals, enabling your phone to access ...



### What Is a Base Station and Its Role in ...

Base stations equipped with advanced technologies like Massive MIMO (Multiple Input Multiple Output) and beamforming directly contribute to the ...

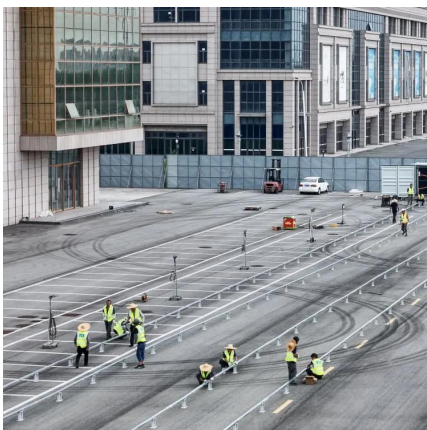


### What is a base station?

Mar 4, 2021 · In telecommunications, a base station is a fixed transceiver that is the main communication point for one or more wireless mobile client devices.

### Base Station's Role in Wireless Communication Networks

What is a base station? A base station is a critical component of wireless communication networks. It serves as the central point of a network that connects various devices, such as ...



### Cellular Networks, Cells, and Base Stations -- EITC

Aug 15, 2009 · These base stations provide the cell with the network coverage which can be used for transmission of voice, data, and other types of content. In radio communications, a ...





### Understanding the Basics: What is a Base ...

Aug 19, 2024 · A base transceiver station (BTS) is designed with several key features that enable it to facilitate wireless communication between ...



### What is the difference between Base Station ...

The performance of base stations directly affects the service quality of mobile communication networks, including call quality, data transmission rate, ...

### What is a Base Station in Telecommunications?

What is a Base Station? A base station is a critical component in a telecommunications network. A fixed transceiver that acts as the central communication hub for one or more wireless mobile ...



## Contact Us

---

For technical specifications, project proposals, or partnership inquiries, please visit:  
<https://www.bukhobuhle.co.za>





## Scan QR Code for More Information



<https://www.bukhobuhle.co.za>