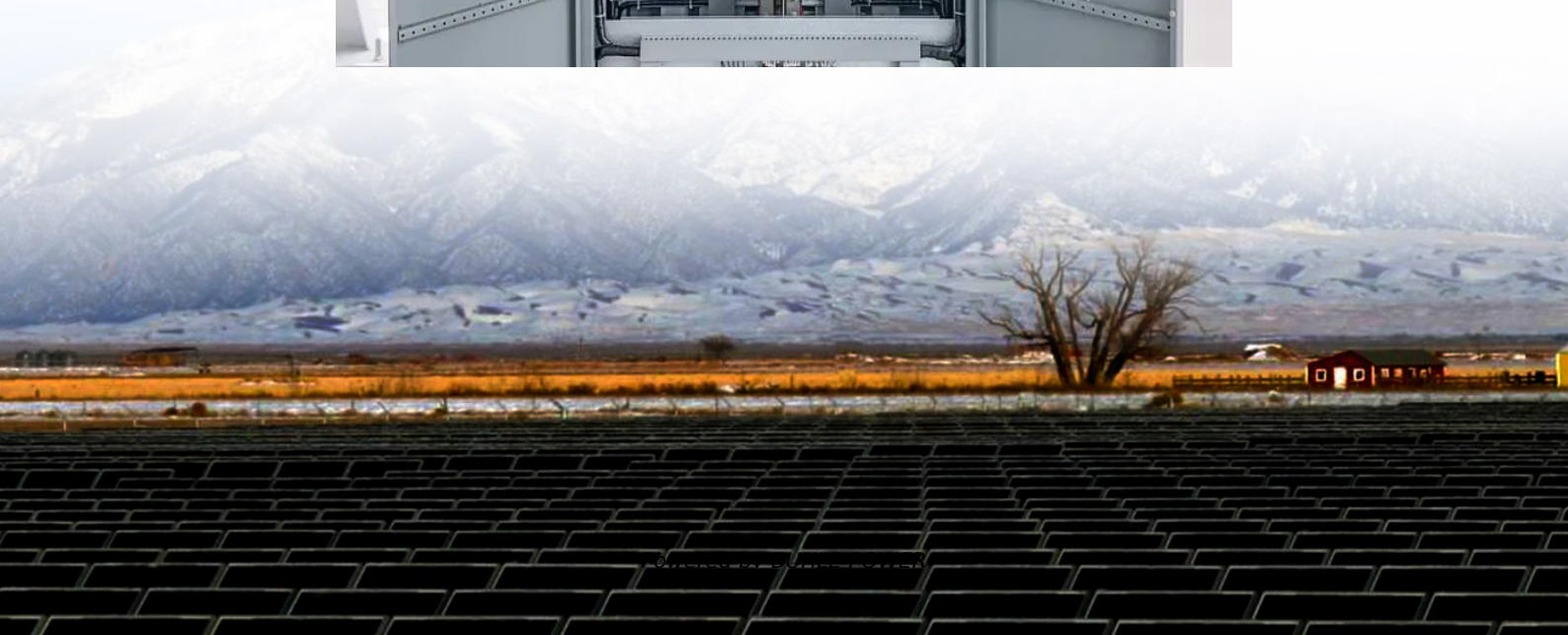


What are the Georgia outdoor power standards





What are the Georgia outdoor power standards

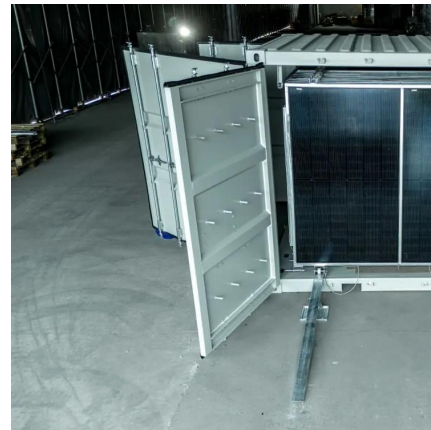


[Regulation of electric utilities](#)

Regulation of Electric Utilities in Georgia
Overview Electric Utility Rate-Making Rate
Design Surveillance Filings Earnings Review
Residential Rate Survey Fuel Cost Recovery
Integrate ...

[About Us . Cordless Power Tools Leader](#)

Dec 3, 2025 · TTI is a world leader in cordless technology spanning Power Tools, Outdoor Power Equipment, Floorcare and Cleaning for the consumer, professional, and industrial users in the ...



[About Us . Cordless Power Tools Leader](#)

Dec 3, 2025 · TTI is a world leader in cordless technology spanning Power Tools, Outdoor Power Equipment, Floorcare and Cleaning for the ...

[Georgia State Amendments to the National Electrical Code](#)

Jun 4, 2024 · The NATIONAL ELECTRICAL CODE, 2020 Edition, published by the National Fire Protection Association, when used in conjunction with these and any other Georgia State ...



[Georgia Power Service Pole Requirements: All You Need to ...](#)

Apr 15, 2023 · These requirements are crucial for maintaining the safety and reliability of Georgia`s power grid. Non-compliance with these standards can lead to power outages, ...



[GWINNETT COUNTY Community Outdoor Lighting ...](#)

Community Outdoor Lighting Efficiency Policy
The design, installation, and operation of outdoor lighting for commercial and multifamily facilities in Gwinnett County, including site lighting and ...



[GEORGIA ENVIRONMENTAL FINANCE AUTHORITY](#)

Jun 9, 2022 · 1 Purpose and Objectives This document has been developed for the Georgia Environmental Finance Authority (GEFA) to provide local governments a guide to planning and ...





[A Comprehensive Guide to Georgia's Compliance Standards ...](#)

Explore the significance of energy efficiency in new construction in Georgia. Learn about state regulations, compliance standards, and the various certification programs available, such as ...

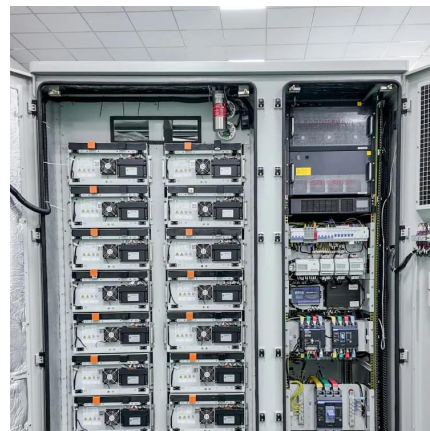


[SERVICE RULES AND REGULATIONS](#)

Feb 25, 2019 · A copy of DPI's applicable retail rates shall be on file at the Georgia Public Service Commission, and will be provided at the headquarters office of DPI in LaGrange, Georgia.

[Chinese Standard GB/T:GBT:GB:YY/T:QC/T](#)

6 days ago · Question 2: Which authorities in China are responsible for national standards (GB, GB/T)? Answer: Both GB and GB/T series standards are issued by Standardization ...



[Georgia Residential Energy Code FIELD GUIDE](#)

Feb 10, 2025 · This guide is organized by building component and attempts to compile all relevant information and key practices related to each component. Each entry includes references to all ...



GEORGIA ENVIRONMENTAL FINANCE AUTHORITY

Purpose and Objectives
Facility Assessment
CRITICAL ELECTRIC LOAD INFORMATION
2.2.1 HVAC Systems
2.2.2 Lighting
2.2.4 Other Electric Loads
Facility Assessment Best Practices
RESILIENT SOLAR POWER GENERATION SYSTEMS
Solar Resiliency Best Practices
SOLAR PLUS BATTERY SYSTEM ARCHITECTURE
MAJOR SYSTEM COMPONENTS
3.3.1 Energy Management System
3.3.4 Orientation and PV Tracking Systems
Single-Axis Tracking
PV Tracking and Orientation Best Practices
3.3.5 Mounting Configurations
This document has been developed for the Georgia Environmental Finance Authority (GEFA) to provide local governments a guide to planning and development of a solar power and battery storage system to provide electric service for critical facilities and shelters during power outages. For the purposes of this Guide, the term "Resiliency System" will See more on gefa.georgia.gov
Generis Global Legal Services



A Comprehensive Guide to Georgia's ...

Explore the significance of energy efficiency in new construction in Georgia. Learn about state regulations, compliance standards, and the various ...

Contact Us

For technical specifications, project proposals, or partnership inquiries, please visit:
<https://www.bukhobuhle.co.za>

Scan QR Code for More Information



<https://www.bukhobuhle.co.za>