

# **Western European solar container communication station wind and solar complementary operation and maintenance**





## Overview

---

Climate change and geopolitical risks call for the rapid transformation of electricity systems worldwide, with Europe at the forefront. Wind and solar are the lowest cost, lowest risk, and cleanest energy.

Should solar power be integrated across European countries?

The integration of solar power across European countries does not provide significant benefits because generation patterns within the continent are homogeneous and the Southern countries have both higher and more consistent solar resource.

What is the spatial distribution of solar PV systems in Europe?

For solar PV, there are no consistent data on the spatial distribution of Europe's utility and rooftop PV systems. We therefore modelled a single crystalline PV installation in each grid cell of MERRA-2, specified at a resolution of  $0.5^\circ$  latitude and  $0.625^\circ$  longitude, and assigned each cell to its respective country.

What is a central West Europe (CWE) market coupling mechanism?

The Central West Europe (CWE) market coupling mechanism was launched in 2010 including the Benelux, France and Germany. In 2014, the North-Western Europe (NWE) system integrated CWE, Great Britain, the Nordics and the Baltics.

Where can I find meteorological data relating to wind power potential?

Meteorological data relevant to wind power potential were obtained from ERA5, which is a reanalysis product of the ECMWF's General Circulation Model available in the Copernicus Climate Data Store.



## Western European solar container communication station wind and

---



### [Spatiotemporal management of solar, wind and hydropower ...](#)

Jan 5, 2024 · Worman and colleagues analyse the coordination of wind, solar and hydropower over continental Europe to balance the continental electric load demand. Modelling results ...

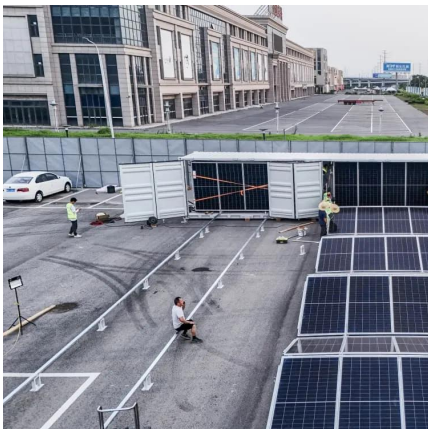
### [Integrated Solar-Wind Power Container for Communications](#)

This large-capacity, modular outdoor base station seamlessly integrates photovoltaic, wind power, and energy storage to provide a stable DC48V power supply and optical distribution. Perfect ...



### [gb communication base station wind and solar ...](#)

4 days ago · 5G base station is Design of Oil Photovoltaic Complementary Power Supply May 15, In response to the construction needs of such scenarios, in order to solve the power supply ...



### [ASSESSING THE POTENTIAL AND COMPLEMENTARY](#)

The invention relates to a communication base station stand-by power supply system based on an activation-type cell and a wind-solar complementary power supply system.



### [Operating communication base stations with wind and...](#)

The wind-solar-diesel hybrid power supply system of the communication base station is composed of a wind turbine, a solar cell module, an integrated controller for hybrid energy



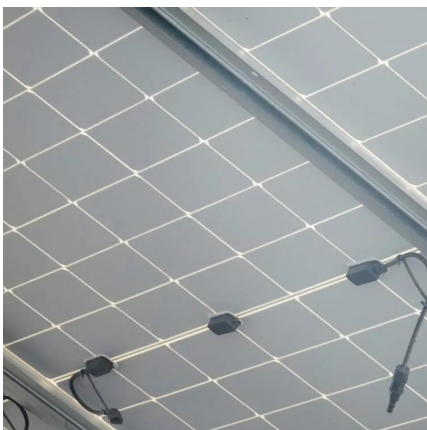
### [Construction of wind and solar complementary ...](#)

Dec 1, 2025 · The successful grid connection of a 54-MW/100-kWp wind-solar complementary power plant in NanâEUR(TM)ao, Guangdong Province, in 2004 was the first windâEUR"solar ...



### [Wind-solar hybrid for outdoor communication base ...](#)

Dec 8, 2025 · Integrated Solar-Wind Power Container for Communications This large-capacity, modular outdoor base station seamlessly integrates photovoltaic, wind power, and energy ...







### [Complementary configuration and operation of Wind-Solar ...](#)

Nov 29, 2024 · With a high percentage of renewable energy systems connected to the grid, the intermittent and volatile nature of their output adversely affects the safe and stable operation of ...

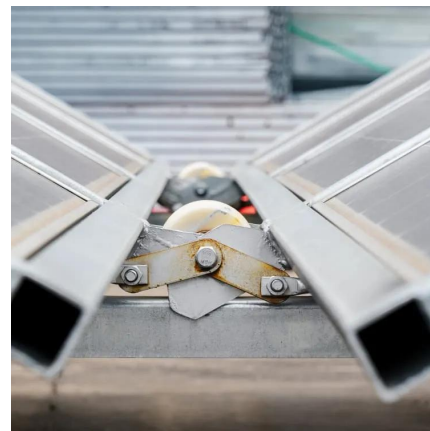


### [Wind-solar technological, spatial and temporal ...](#)

Apr 1, 2024 · We find that optimal cross-country coordination of wind and solar capacities across Europe's integrated electricity system increases capacity factor by 22% while reducing hourly ...

### [Communication base station wind and solar ...](#)

Nov 27, 2025 · The wind-solar-diesel hybrid power supply system of the communication base station is composed of a wind turbine, a solar cell module, an integrated controller for hybrid ...



## Contact Us

---

For technical specifications, project proposals, or partnership inquiries, please visit:  
<https://www.bukhobuhle.co.za>



## Scan QR Code for More Information



<https://www.bukhobuhle.co.za>