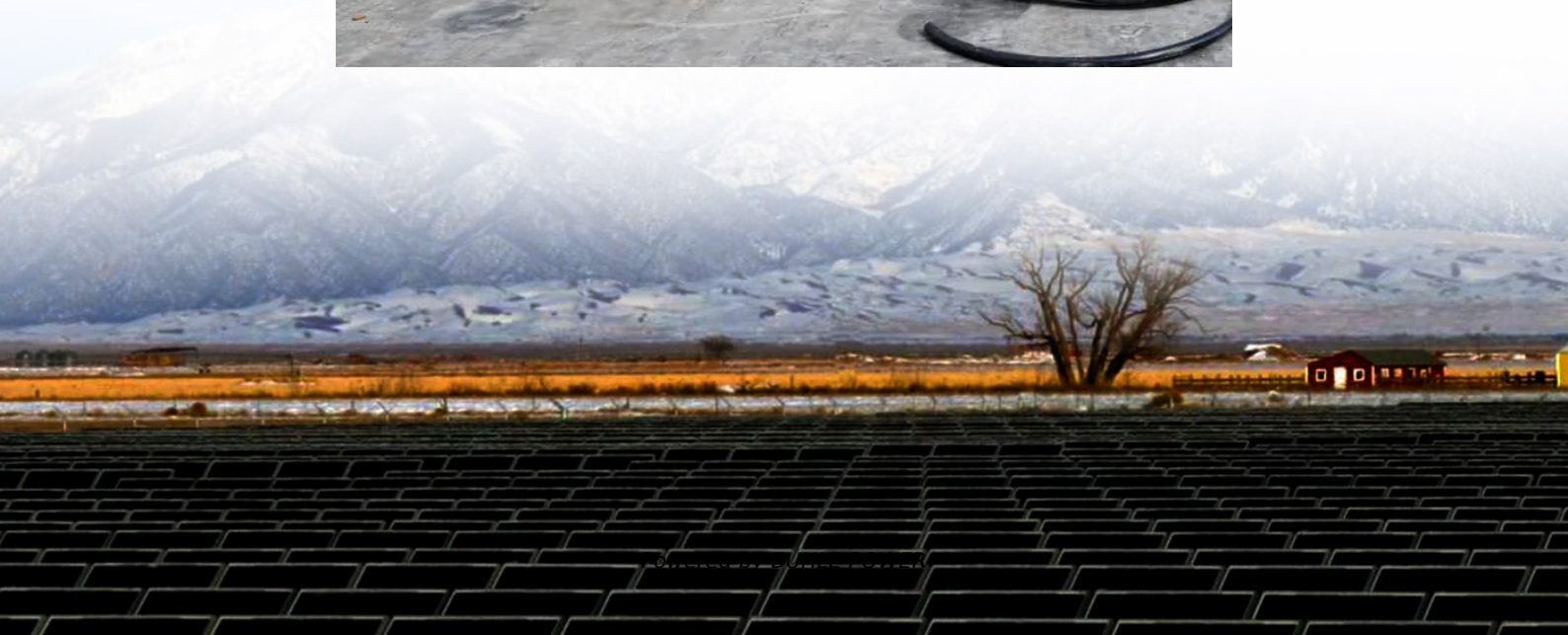


Wellington container base station





Overview

Where is Wellington Port?

Please try again later. Wellington Port, also known as CentrePort Wellington, is a key maritime gateway located in New Zealand's capital city, Wellington. It is strategically positioned on the southern tip of the North Island, providing a central hub for both domestic and international shipping routes.

What types of cargo is handled at the port of Wellington?

The Port of Wellington is equipped with modern infrastructure to handle diverse types of cargo, including containerized goods, dry and liquid bulk, and breakbulk cargo. The port offers specialized facilities such as a container terminal, bulk storage areas, and dedicated handling equipment for forestry products, vehicles, and other general cargo.

Why is Wellington Port important?

Wellington Port is a vital component of New Zealand's port infrastructure, supporting a wide range of maritime activities and contributing significantly to the country's economic landscape. Its modern facilities, strategic location, and comprehensive services make it a critical hub for both cargo and passenger movements.

Where are Auckland & Wellington Port operations located?

Our Auckland and Wellington Port Operations are located right on the wharf. This allows efficient processing of paperwork and clear lines of communication allow any MAF Biosecurity or Customs issues to be resolved quickly and in person. We directly link into all of the major Ports websites, giving you instant access to:



Wellington container base station



[What we do -- CentrePort Wellington](#)

What we do We handle a wide range of cargo, including containers, logs, bulk fuel, vehicles and other bulk cargo. Our experienced marine services team, equipped with modern tugs and ...

[Port of Wellington, NZWLG, New Zealand](#)

Port Facilities The Port of Wellington is equipped with modern infrastructure to handle diverse types of cargo, including containerized goods, dry and liquid bulk, and breakbulk cargo. The ...



[CENTREPORT WELLINGTON](#)

CENTREPORT WELLINGTON is a container terminal in Wellington (see more Wellington terminals). Terminal49 combines terminal data, carrier data, AIS data, and other sources to ...

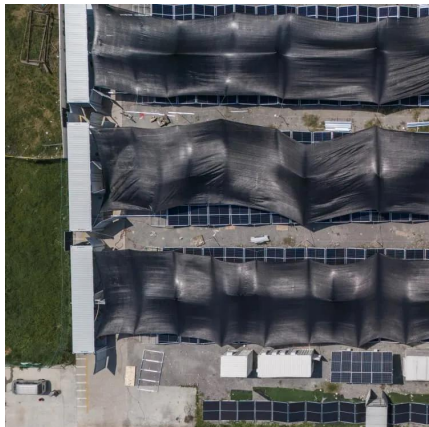
WELLINGTON Port

Port Wellington, also known as CentrePort, is a major shipping and transportation hub located in Wellington, the capital city of New Zealand. It serves as an important connection point for both ...



Wellington

Dec 2, 2025 · Wellington is a significant port serving the lower North Island, with the Regional Council-owned company Centreport recording around 14,000 commercial shipping ...



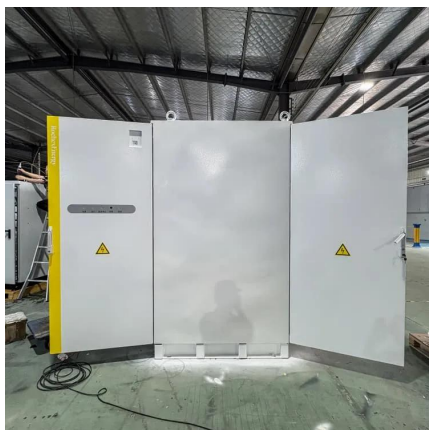
[Welcome to CentrePort -- CentrePort Wellington](#)

Located in the capital city of Wellington, CentrePort is a modern port and logistics business serving the needs of central Aotearoa New Zealand.



[What we do -- CentrePort Wellington](#)

What we do We handle a wide range of cargo, including containers, logs, bulk fuel, vehicles and other bulk cargo. Our experienced marine services ...





[Port Operations Services , Mainfreight New Zealand](#)

We also offer container packing and unpacking services via our fully MAF Accredited, under bonded Container Freight Station. Mainfreight Port Operations are the container cartage ...



[Port Operations Services , Mainfreight New ...](#)

We also offer container packing and unpacking services via our fully MAF Accredited, under bonded Container Freight Station. Mainfreight Port ...



Contact Us

For technical specifications, project proposals, or partnership inquiries, please visit:
<https://www.bukhobuhle.co.za>

Scan QR Code for More Information



<https://www.bukhobuhle.co.za>