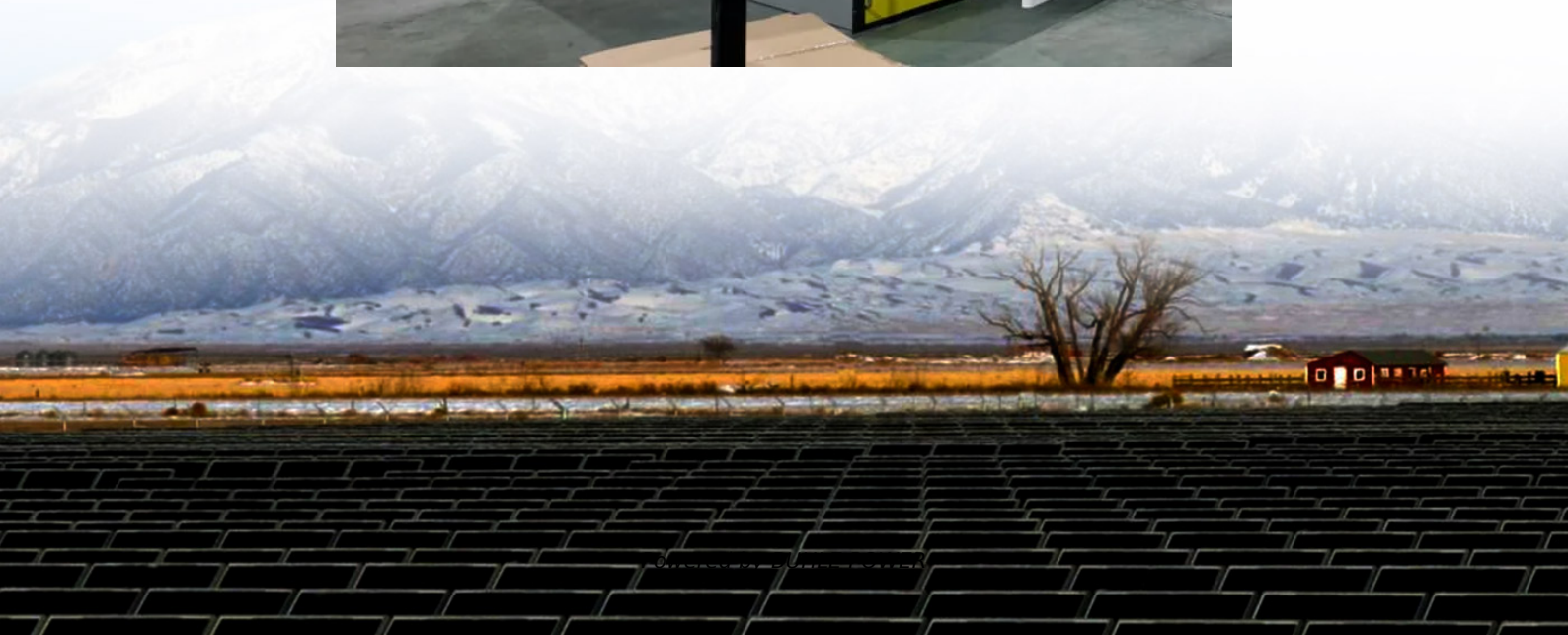


Wattage specifications of solar panels





Overview

What is solar wattage?

Wattage refers to the amount of electrical power a solar panel can produce under standard test conditions (STC), which simulate a bright sunny day with optimal solar irradiance ($1,000 \text{ W/m}^2$), a cell temperature of 25°C , and clean panels. In simpler terms, a panel's wattage rating tells you its maximum power output under ideal conditions.

What are the key specifications of solar panels?

The article covers the key specifications of solar panels, including power output, efficiency, voltage, current, and temperature coefficient, as presented in solar panel datasheets, and explains how these factors influence their performance and suitability for various applications.

What size solar panels do I Need?

When it comes to solar systems, homeowners will find a variety of solar panel sizes and wattage that cater to different needs and roofing configurations. Typically, these units range from 60 to 72 cells. For example, a standard 60-cell module measures about 65 inches by 39 inches, while a larger 72-cell unit is approximately 77 inches by 39 inches.

How much wattage should a solar panel have?

When considering solar panel sizes and wattage, you'll typically find options ranging from 250 to 400 watts. Opting for higher wattage units can be a game-changer, especially for those with limited roof space.



Wattage specifications of solar panels



[Solar Panel Ratings Explained - Wattage, Current, Voltage, ...](#)

Nov 11, 2024 · Solar panel ratings are crucial for understanding how solar panels perform and what they're capable of. Whether you're setting up a DIY system or a larger solar installation, ...

[Understanding the Specifications of Solar Panels - Expert ...](#)

Choosing the right solar panel isn't about chasing the highest wattage number--it's about understanding the specifications of solar panels well enough to match them to your climate, ...



[Understanding Solar Panel Wattage Ratings](#)

Jul 8, 2025 · Monocrystalline panels are known for higher efficiency and usually come with higher Solar Panel Wattage ratings. Polycrystalline ...



[Understanding Solar Panel Wattage Ratings](#)

Jul 8, 2025 · Monocrystalline panels are known for higher efficiency and usually come with higher Solar Panel Wattage ratings. Polycrystalline panels are more budget-friendly but less efficient, ...



[Understanding Solar Panel Sizes and ...](#)

Feb 20, 2025 · When it comes to solar systems, homeowners will find a variety of solar panel sizes and wattage that cater to different needs and ...



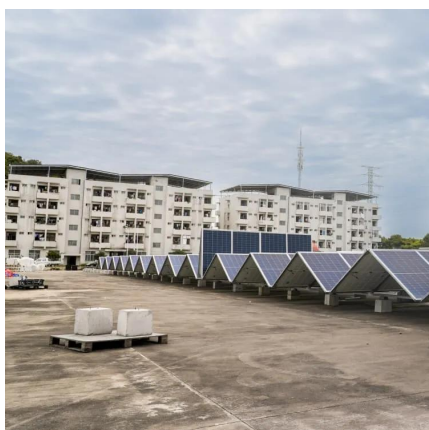
[Understanding Solar Panel Sizes and Wattage: A Complete ...](#)

Feb 20, 2025 · When it comes to solar systems, homeowners will find a variety of solar panel sizes and wattage that cater to different needs and roofing configurations. Typically, these ...



[Standard Solar Panel Sizes And Wattages \(100W-500W ...](#)

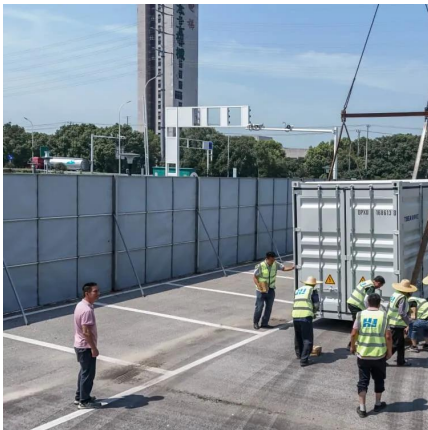
1 day ago · You can find typical dimensions of 100W, 150W, 170W, 200W, 200W, 220W, 300W, 350W, 400W, and 500W solar panels summarized in the chart below. But, just to emphasize ...





[The Ultimate Guide to Solar Panel Size, ...](#)

Sep 5, 2025 · Introduction Solar Panel Size, Weight & Wattage Standard residential solar panels are typically around 5.8 feet long by 3.5 feet wide ...



[The Ultimate Guide to Solar Panel Size, Weight & Wattage ...](#)

Sep 5, 2025 · Introduction Solar Panel Size, Weight & Wattage Standard residential solar panels are typically around 5.8 feet long by 3.5 feet wide and weigh between 40 to 50 pounds. ...

[Solar Panel Ratings Explained - Wattage, ...](#)

Nov 11, 2024 · Solar panel ratings are crucial for understanding how solar panels perform and what they're capable of. Whether you're setting up a ...



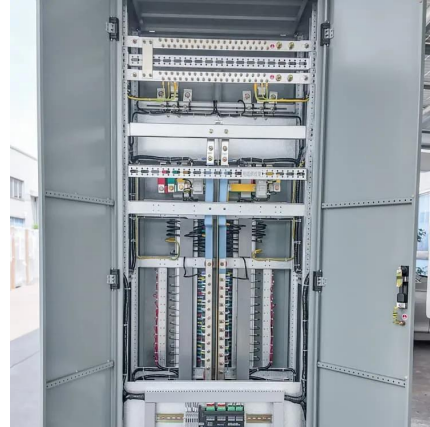
[Solar Panel Wattage Explained: How Many ...](#)

Jul 1, 2025 · Confused about solar panel wattage? Learn how many watts you need, how solar output works, and how to calculate the right solar ...



[Standard Solar Panel Sizes And Wattages ...](#)

1 day ago · You can find typical dimensions of 100W, 150W, 170W, 200W, 200W, 220W, 300W, 350W, 400W, and 500W solar panels summarized ...



[Solar Panel Datasheet Specifications Explained](#)

1 day ago · The article covers the key specifications of solar panels, including power output, efficiency, voltage, current, and temperature coefficient, as presented in solar panel ...



[Solar Panel Wattage & Output Explained](#)

Oct 14, 2025 · Why? Because actual solar panel power output depends on more than just the wattage on the spec sheet. Efficiency, temperature, ...



[Solar Panel Wattage & Output Explained](#)

Oct 14, 2025 · Why? Because actual solar panel power output depends on more than just the wattage on the spec sheet. Efficiency, temperature, sunlight, shading, orientation, and even ...





[Understanding the Specifications of Solar Panels and How to ...](#)

Nov 17, 2023 · Specifications of the solar panel include details on the efficiency, wattage, temperature coefficients, and warranty.



[Solar Panel Wattage Explained: How Many Watts Do You ...](#)

Jul 1, 2025 · Confused about solar panel wattage? Learn how many watts you need, how solar output works, and how to calculate the right solar setup for your home, RV, or cabin.

[Understanding the Specifications of Solar Panels and How ...](#)

1 day ago · The article covers the key specifications of solar panels, including power output, efficiency, voltage, current, and temperature coefficient, as ...



Contact Us

For technical specifications, project proposals, or partnership inquiries, please visit:
<https://www.bukhobuhle.co.za>



Scan QR Code for More Information



<https://www.bukhobuhle.co.za>