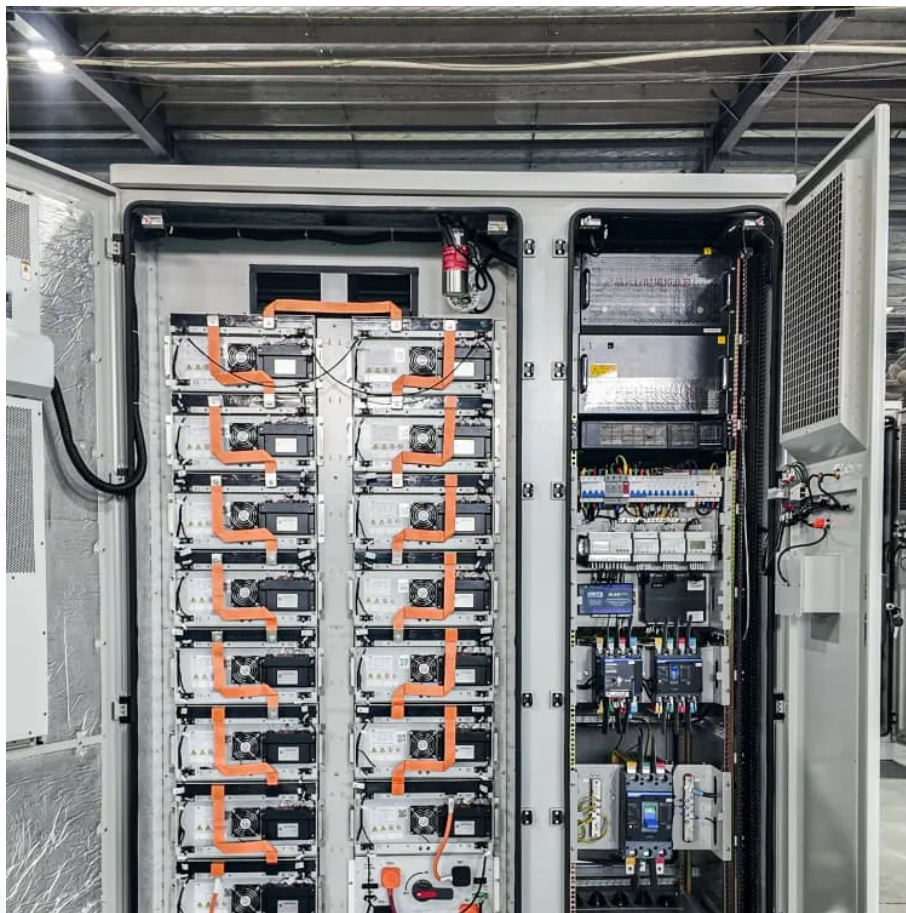


Various protection functions of grid-connected inverter





Overview

What happens when the grid-tie inverter stops supplying power to the grid?

Automatic recovery of the grid-connected protection: After the grid-tied inverter stops supplying power to the grid because of the fault of the grid, the grid-tie inverter should be able to automatically send power to the grid 5 min after the grid voltage and frequency return to the normal range for 20s.

Can grid-connected PV inverters improve utility grid stability?

Grid-connected PV inverters have traditionally been thought as active power sources with an emphasis on maximizing power extraction from the PV modules. While maximizing power transfer remains a top priority, utility grid stability is now widely acknowledged to benefit from several auxiliary services that grid-connected PV inverters may offer.

What is a grid-connected inverter?

4. Grid-connected inverter control techniques Although the main function of the grid-connected inverter (GCI) in a PV system is to ensure an efficient DC-AC energy conversion, it must also allow other functions useful to limit the effects of the unpredictable and stochastic nature of the PV source.

What is grid tie inverter overvoltage protection?

1. Input overvoltage protection: When the DC-side input voltage is higher than the maximum allowable DC array access voltage of the grid tie inverter, the inverter is not allowed to start or stop within 0.1s (in operation) and a warning signal is released at the same time.



Various protection functions of grid-connected inverter



[Design Protection Schemes for 100% Renewable ...](#)

Dec 5, 2022 · Types of Inverter Control Inverter controls can be grouped into three categories: grid-following (GFL), grid-forming (GFM), and grid-supporting.

[The Performance and Robustness of Power Protection Schemes for Grid](#)

Oct 12, 2024 · In grid-connected mode, the fault current is a combination of contributions from both the utility grid and inverter-based resources. Different control schemes influence the ...



[\(PDF\) Protection of 100% Inverter-dominated Power Systems with Grid](#)

Jun 8, 2025 · The webpage discusses the protection of 100% inverter-dominated power systems with grid-forming inverters and protection relays through gap analysis and expert interviews.



[Solar Grid Tie Inverter Protection Function ...](#)

Sep 29, 2019 · Compliance: Meet regulatory requirements and industry standards for grid-connected solar power systems. Protection functions ...



[15 important functions of solar inverter protection - ...](#)

Dec 14, 2023 · The grid-connected inverter should have inverter protection functions for overheating, such as alarm for excessive ambient temperature in the machine (such as ...



[Solar Grid Tie Inverter Protection Function Introduction](#)

Sep 29, 2019 · Compliance: Meet regulatory requirements and industry standards for grid-connected solar power systems. Protection functions are an indispensable aspect of solar grid ...



[Support functions and grid-forming control on grid connected ...](#)

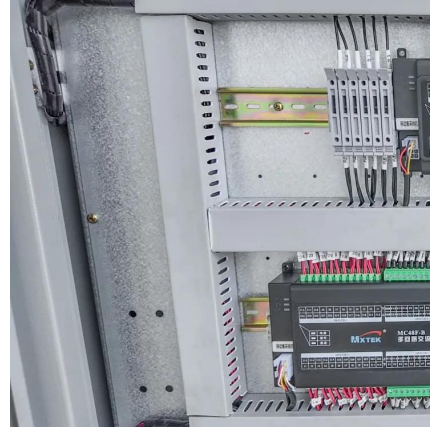
Aug 6, 2024 · Power electronics-based renewable energy resources are generally connected to the electricity grid through an inverter. These devices are capable of providing support ...





[Grid-connected photovoltaic inverters: Grid codes, ...](#)

Jan 1, 2024 · With the development of modern and innovative inverter topologies, efficiency, size, weight, and reliability have all increased dramatically. This paper provides a thorough ...



[15 important functions of solar inverter protection - TYCORUN](#)

Dec 14, 2023 · The grid-connected inverter should have inverter protection functions for overheating, such as alarm for excessive ambient temperature in the machine (such as ...



[Seven basic protection functions of solar photovoltaic inverters](#)

Aug 15, 2025 · The photovoltaic grid-connected inverter is a key device in the Solar Power generation system. As an important electrical equipment within the photovoltaic power ...



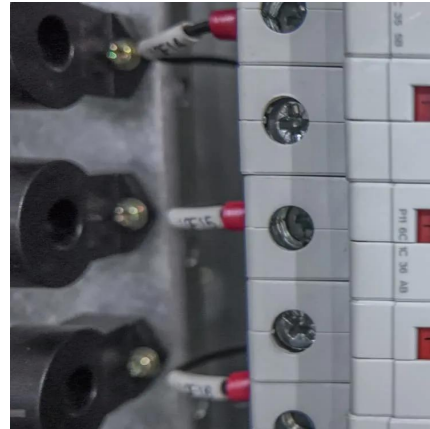
[Photovoltaic inverter protection function](#)

An inverter model that characterizes the fault response of the inverter and its associated protection functions was developed for simulation through laboratory testing of a commercially ...



[Inverter Protection and Ride-Through: Today's](#)

Jun 4, 2021 · Inverter grid supporting functions, along with voltage and frequency ride-through, provide key behaviors that both support and enhance grid reliability. Today's PV and energy ...



Contact Us

For technical specifications, project proposals, or partnership inquiries, please visit:
<https://www.bukhobuhle.co.za>

Scan QR Code for More Information



<https://www.bukhobuhle.co.za>