

Types of Nepal Telecommunications BESS Power Stations





Types of Nepal Telecommunications BESS Power Stations



[Energy Demand Analysis of Telecom Towers of Nepal](#)

Jan 10, 2015 · Base Transceiver Stations are the most energy intensive part of cellular network architecture and contribute up to 60 to 80% of total cellular power consumption and varies in ...

[Nepal's communication base station adopts ...](#)

Jun 13, 2024 · The telecommunications industry is developing rapidly. In order to provide high quality service, Nepal Telecom has deployed up to ...

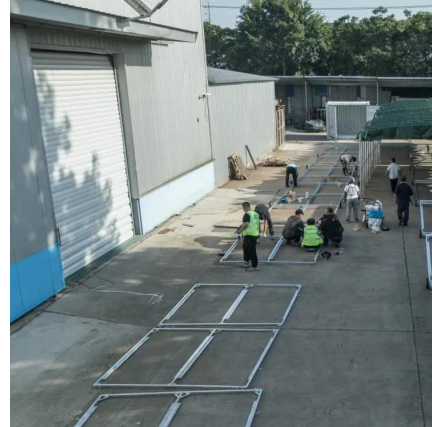


Nepal

Nov 24, 2025 · Data collected and prepared for a project of the World Bank Group in October 2013. Includes transmission lines, substations, as well as power stations. Includes existing as ...

[List of power stations in Nepal](#)

Other power stations Solar power stations
Simikot 50 kW Gamgadhi 50 kW Dhobighat
Oxidaizing Pond 680.4 kW, Owner:KUKL,
Dedicated 11 kV feeder connecting to Teku
Substation 10 other ...



[Final Energy Demand \(Sectorwise\) of Telecom ...](#)

Telecom towers, technically known as BTS (Base Transceiver Stations) are the most energy intensive part of cellular network architecture and ...



[The Best of the BESS: The Role of Battery Energy Storage ...](#)

Oct 24, 2025 · In an era of rapid technological advancement and increasing reliance on renewable energy, battery energy storage systems (BESS) are emerging as pivotal players in ...



[Energy Demand Analysis of Telecom Towers of Nepal...](#)

Jan 5, 2015 · Abstract: Telecom towers, technically known as BTS (Base Transceiver Stations) are the most energy intensive part of cellular network architecture and contribute up to 60 to ...





[Energy Demand Analysis of Telecom Towers ...](#)

Jan 10, 2015 · Base Transceiver Stations are the most energy intensive part of cellular network architecture and contribute up to 60 to 80% of total ...



[Final Energy Demand \(Sectorwise\) of Telecom Towers of Nepal...](#)

Telecom towers, technically known as BTS (Base Transceiver Stations) are the most energy intensive part of cellular network architecture and contribute up to 60 to 80% of total cellular ...

[Technical and Economic Assessment of Renewable Energy ...](#)

Abstract Telecommunication Networks have changed the way people live, work and play. Due to the massive demand of broadband services, the power solutions is an urgent requirement ...



[Types of Nepal Telecommunications BESS Power Stations](#)

As of 4 March 2025, Nepal's total installed electricity capacity is 3421.956 megawatts (MW). This includes 3255.806 MW from hydropower, 106.74 MW from solar, 53.41 MW from thermal, ...



[List of power stations in Nepal](#)

The list of power stations in Nepal enumerates the nation's electricity generation facilities, which are predominantly hydroelectric and leverage the country's extensive river networks in the ...



[Nepal's communication base station adopts Huatong's solar power ...](#)

Jun 13, 2024 · The telecommunications industry is developing rapidly. In order to provide high quality service, Nepal Telecom has deployed up to 74 communication base stations ...

Contact Us

For technical specifications, project proposals, or partnership inquiries, please visit:
<https://www.bukhobuhle.co.za>

Scan QR Code for More Information



<https://www.bukhobuhle.co.za>