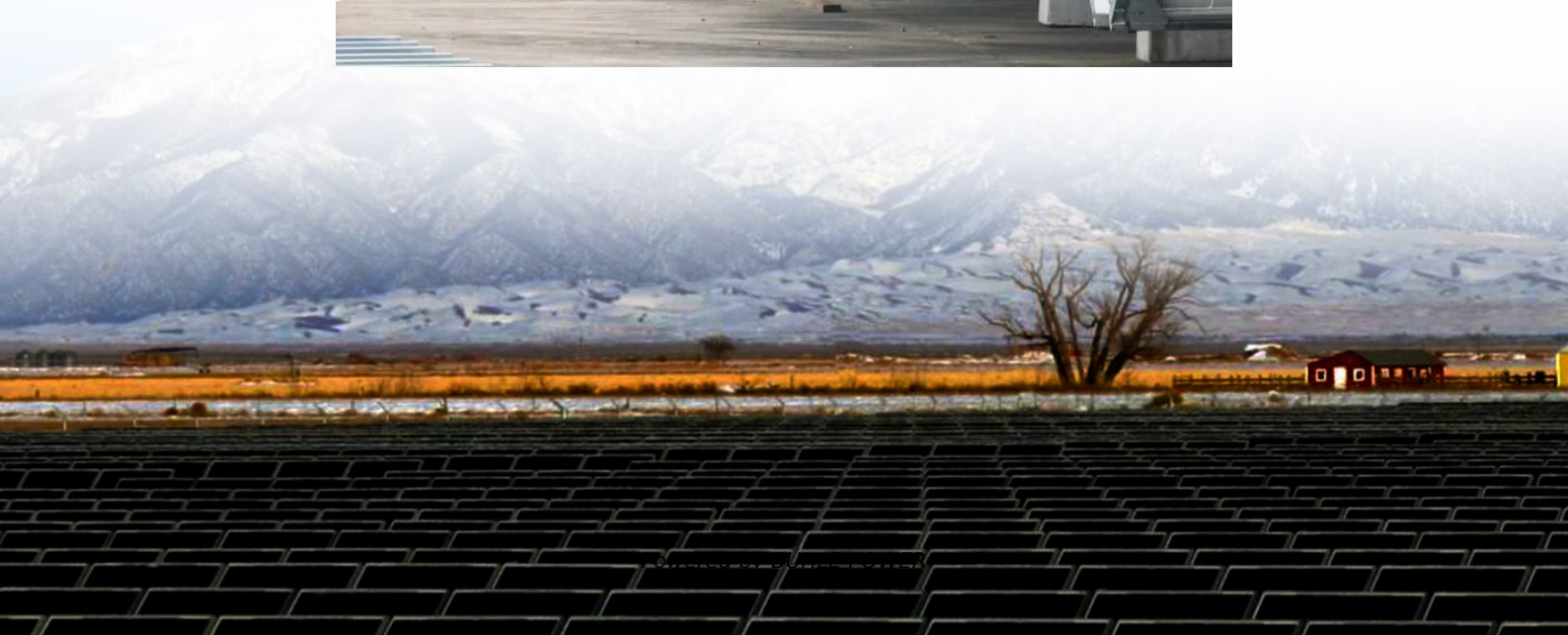


# **Three-phase voltage type full-bridge inverter**





## Overview

---

What is a three phase bridge inverter?

A three phase bridge inverter is a device which converts DC power input into three phase AC output. Like single phase inverter, it draws DC supply from a battery or more commonly from a rectifier. A basic three phase inverter is a six step bridge inverter. It uses a minimum of 6 thyristors.

What is a bridge type inverter?

The simplest form of an inverter is the bridge-type, where a power bridge is controlled according to the sinusoidal pulse-width modulation (SPWM) principle and the resulting SPWM wave is filtered to produce the alternating output voltage. In many applications, it is important for an inverter to be lightweight and of a relatively small size.

What is a three-phase full-bridge inverter?

Commonly the full-bridge topology is used for three-phase inverters. For three-phase applications including motor drives, UPSs, and grid-tied solar inverters, the three-phase full-bridge inverter topology is a frequently used design. The architecture is Figure 19: The Topology of a Three-Phase Full Bridge Inverter.

How many switches are needed for a 3-phase bridge inverter?

In particular, considering “full-bridge” structures, half of the devices become redundant, and we can realize a 3-phase bridge inverter using only six switches (three half-bridge legs). The 3-phase bridge comprises 3 half-bridge legs (one for each phase; a, b, c).



## Three-phase voltage type full-bridge inverter

---



### [Voltage Fed Full Bridge DC-DC & DC-AC Converter High ...](#)

Apr 1, 2023 · The simplest form of an inverter is the bridge-type, where a power bridge is controlled according to the sinusoidal pulse-width modulation (SPWM) principle and the ...

### [Three Phase Bridge Inverter Explained](#)

Sep 6, 2020 · Three Phase Bridge Inverter Explained with circuit diagram, firing sequence of SCRs 180 degree operation, output voltage waveform ...



### [Three Phase VSI with 120° and 180° ...](#)

Oct 27, 2024 · A three-phase inverter is a type of power electronic device that converts DC (Direct Current) power into AC (Alternating Current) ...

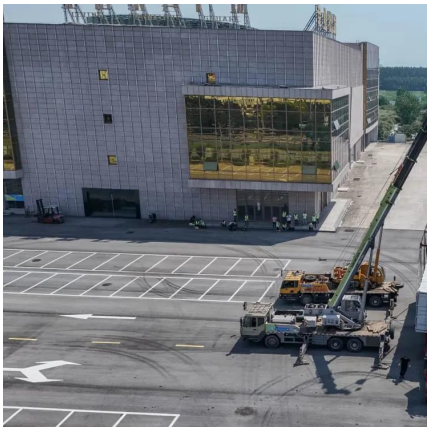
### [2-Level full bridge Inverter \(3-phase application\)](#)

The three-phase full-bridge inverter topology is the simplest and most widely used structure for systems connected to the grid. It consists of three sets of "bridges", each of which consists in ...



### [2-Level full bridge Inverter \(3-phase application\)](#)

The three-phase full-bridge inverter topology is the simplest and most widely used structure for systems connected to the grid. It consists of three sets ...



### [Research on Model Predictive Voltage Control Strategy of Three-Phase](#)

Nov 9, 2024 · Model predictive control (MPC) has shown potential for a wide range of applications in the three-phase full-bridge inverters based on its advantages of easy modelling, excellent ...



### [Modeling and simulation of three-phase IGBT full-bridge inverter](#)

Aug 1, 2024 · The three-phase IGBT full bridge inverter circuit has an external independent voltage source  $V_c$  of 380 V, three load resistors of  $1\Omega$ , three filter capacitors of 1200uF, and ...







### Lecture 23: Three-Phase Inverters

Feb 24, 2025 · In particular, considering "full-bridge" structures, half of the devices become redundant, and we can realize a 3-phase bridge inverter using only six switches (three half ...

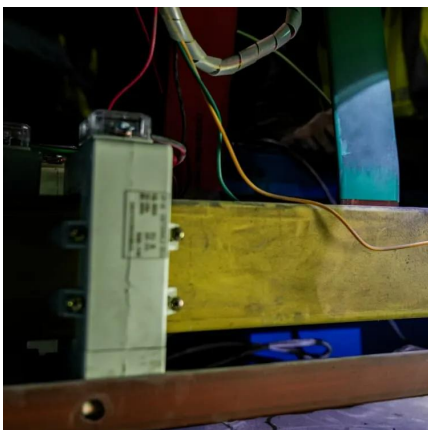
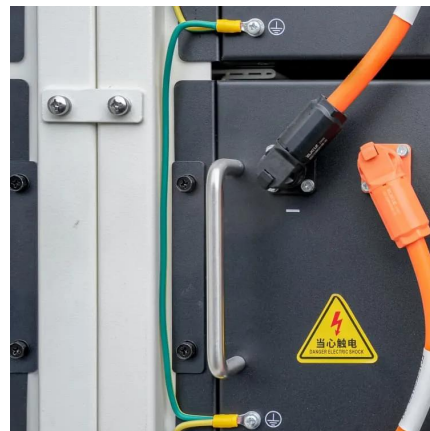


### Three-Phase Inverters

For three-phase applications including motor drives, UPSs, and grid-tied solar inverters, the three-phase full-bridge inverter topology is a frequently used design.

### Three Phase Bridge Inverter , Working ...

The voltage waveforms for three phase-to-neutral voltages of the three phase bridge Inverter of Fig. 11.49 can be easily drawn by this procedure. It is ...



## **CHAPTER4**

Dec 22, 2023 · 4.1 Introduction In this chapter the three-phase inverter and its functional operation are discussed. In order to realize the three-phase output from a circuit employing dc as the ...



### Three Phase Bridge Inverter Explained

Sep 6, 2020 · Three Phase Bridge Inverter Explained with circuit diagram, firing sequence of SCRs 180 degree operation, output voltage waveform & formulas.



### Three Phase VSI with 120° and 180° Conduction Mode

Oct 27, 2024 · A three-phase inverter is a type of power electronic device that converts DC (Direct Current) power into AC (Alternating Current) power with three phases. It is widely used in ...

### Three Phase Bridge Inverter , Working Principle:

The voltage waveforms for three phase-to-neutral voltages of the three phase bridge Inverter of Fig. 11.49 can be easily drawn by this procedure. It is immediately obvious that these voltages ...



## Contact Us

For technical specifications, project proposals, or partnership inquiries, please visit:  
<https://www.bukhobuhle.co.za>



## Scan QR Code for More Information



<https://www.bukhobuhle.co.za>