

The distance between the battery cabinet and the wall in the machine room





Overview

How far should a battery be from a wall?

The distance to the wall for racks and cabinets is 3 100 mm for a better placement of connections and better access for cleaning. Batteries must be assessable easy that service with normal insulated tools can be made (pr EN 50272-2).

How should a battery room be located?

This will reduce the cost and exposure of the dc distribution system. The battery room shall be located in a way that provides access for lifting equipment to be used during initial installation and future maintenance operations. The location shall be as free from vibration as practical.

How high should a battery room be?

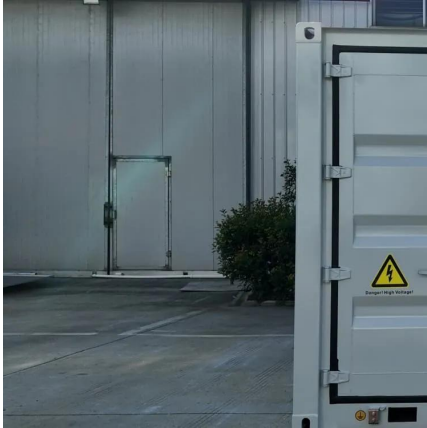
Battery rooms must be dry and have to have a height of 2 m above the operating floors. For vented batteries the floor surface must be electrolyte resistant, some national regulation will require a threshold. This precaution is not necessary for valve regulated batteries.

Where should a battery be located?

The battery shall be located as close as practical to the load. This will reduce the cost and exposure of the dc distribution system. The battery room shall be located in a way that provides access for lifting equipment to be used during initial installation and future maintenance operations.



The distance between the battery cabinet and the wall in the machine



[Battery Room Design Requirements - PAKTECHPOINT](#)

It does not cover maintenance free or computer room type batteries and battery cabinets. Main keywords for this article are Battery Room Design Requirements, vented lead acid batteries, ...

[What is the appropriate safety distance between battery ...](#)

The space requirements for battery systems must comply with 110.26. Working space is measured from the edge of the battery cabinet, racks, or trays. For battery racks, there is a ...



[BatteryRoomVentilationInstallation.PDF](#)

Feb 19, 2004 · The battery room temperature should be between + 5° C and + 25° C. Inside the battery the maximum temperature difference between cells and blocks must not exceed 10 K ...



[Designing Industrial Battery Rooms: Fundamentals and ...](#)

900mm min Battery Room Layout 1200mm Primary Access End Access 1000mm Battery Racks Industrial battery installations require adequate spacing for maintenance, ventilation, and ...



[Battery Room Safety & Installation Guide](#)

Technical document detailing safety and installation guidelines for battery rooms, including ventilation, temperature, and electrical requirements.



[Battery Room Safety & Installation Guide](#)

Technical document detailing safety and installation guidelines for battery rooms, including ventilation, temperature, and electrical requirements.



[The distance between the battery cabinet and the wall in ...](#)

The distance between the battery cabinet and the wall in the machine room To cater for emergency exit situations the distance between stands or enclosures should be considered. It ...





[Essential Safety Distances for Large-Scale Energy Storage ...](#)

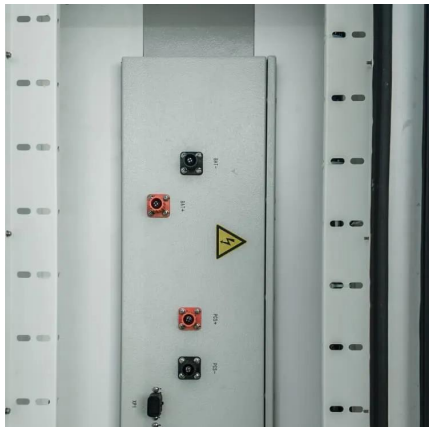
Mar 18, 2025 · Discover the key safety distance requirements for large-scale energy storage power stations. Learn about safe layouts, fire protection measures, and optimal equipment ...



The distance between the battery cabinet and the wall in the machine room

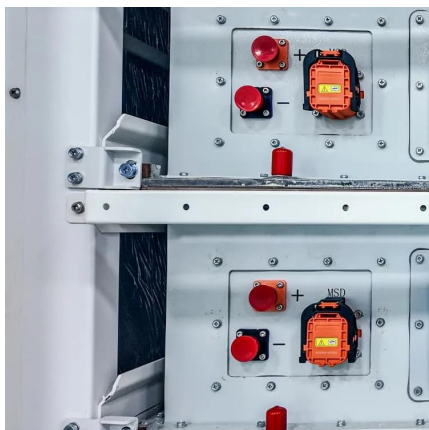
This article looks at the preferred designs for battery rooms and discusses how batteries should be laid out to give a safe environment. Alternative battery stand types are discussed to.

...



EG4 BESS Spacing

Jan 31, 2025 · The minimum horizontal spacing requirement is 30 cm (12 inches) between two EG4-LL, EG4-LL-S and/or LifePower4 6 slot battery cabinet pairs as shown in Figure 2.



[Battery Room Design Requirements - PAKTECHPOINT](#)

Battery Room References
Battery Room Design Requirements
Location of Battery Room
Layout of Battery Room
Battery Room Architectural Requirements
Battery Room Ventilation & HVAC
Battery Room Safety Requirements
Battery Installations in Unit Substations and Equipment Rooms
Battery Room storage Cabinet
The battery shall be located as close as practical to the load. This will reduce the cost and exposure of the dc distribution system. The battery room shall be



located in a way that provides access for lifting equipment to be used during initial installation and future maintenance operations. The location shall be as free from vibration as practical. The battery shall be located as close as practical to the load. This will reduce the cost and exposure of the dc distribution system. The battery room shall be located in a way that provides access for lifting equipment to be used during initial installation and future maintenance operations. The location shall be as free from vibration as practical. The location shall be selected so as to protect the battery from flooding and other natural phenomena, and from fire and explosions in the operating areas. See more New content will be added above the current area of focus upon selection See more on paktechpoint dutchpridepiling [PDF]

The distance between the battery cabinet and the wall in

...

The distance between the battery cabinet and the wall in the machine room To cater for emergency exit situations the distance between stands or enclosures should be considered. It ...

[Distance between battery and battery in the machine room](#)

What temperature should a battery be kept in? The battery room temperature should be between + 5° C and + 25° C. Inside the battery the maximum temperature difference between cells and ...



Contact Us

For technical specifications, project proposals, or partnership inquiries, please visit: <https://www.bukhobuhle.co.za>



Scan QR Code for More Information



<https://www.bukhobuhle.co.za>