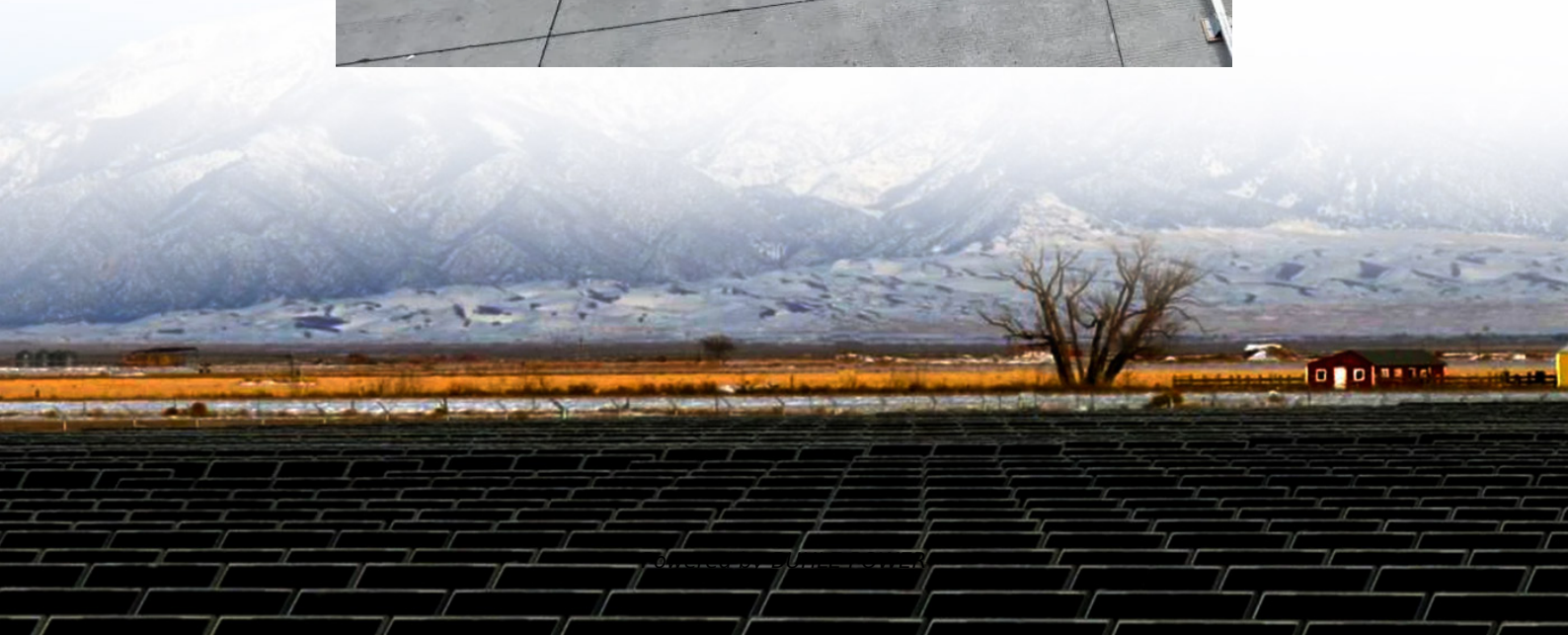
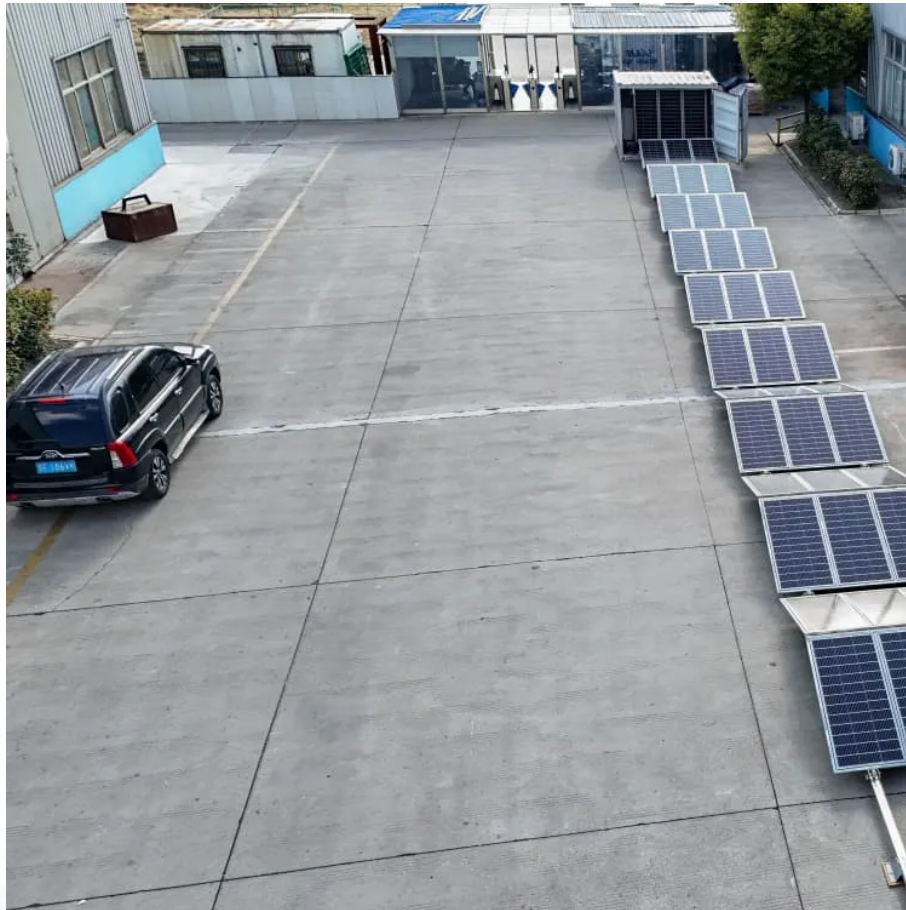


Solar panels power generation in Hargeisa during winter





Overview

Do solar panels work in winter?

It's a common myth that solar panels don't work during winter. Interestingly, cold temperatures typically improve solar panel output, which means your panels will produce more power for each precious hour of sunshine during the short days of winter. Solar panels work by turning sunlight into electricity.

How does cold weather affect solar panels?

Interestingly, cold temperatures typically improve solar panel output, which means your panels will produce more power for each precious hour of sunshine during the short days of winter. Solar panels work by turning sunlight into electricity. But air temperature doesn't have much to do with that process.

Do solar panels work in snow?

Let's talk about why solar panels are a great investment if you live in a snowy climate. Solar panels work well in the winter as long as they don't stay covered in snow. Solar panels are more efficient in colder weather than hot. Snow typically melts or slides off of panels, as they are installed at an angle. Do solar panels work in the winter?

.

Why do solar panels need to be tilted in winter?

Panels are also designed to withstand adverse weather conditions such as rain, wind, or snow. In areas with harsher winters, adjusting the panel tilt is recommended to help snow slide off instead of accumulating. And if it rains—even better: rain helps keep panels clean, improving their performance. How much energy is produced in winter?



Solar panels power generation in Hargeisa during winter



[Do Solar Panels Work in Winter? Debunking Myths . YellowLite](#)

Mar 6, 2025 · Wondering if solar panels work in winter? Learn the facts about efficiency, snow impact, and how solar energy continues to save you money year-round.

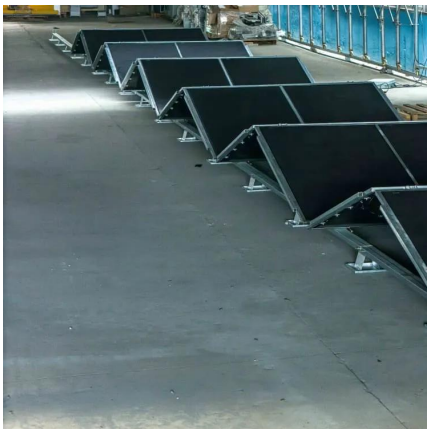
[Do solar panels work in snow and during winter?](#)

Nov 25, 2024 · EnergySage explains how winter weather can be the best time for solar. Find out about solar performance in snow and winter PV installations.



[Hargeisa Energy Storage Photovoltaic Power Generation ...](#)

SunContainer Innovations - Summary: Discover how Hargeisa's innovative integration of photovoltaic power generation pumps with energy storage systems solves water and electricity ...



[Is it worth installing solar panels in winter? Solar energy](#)

Nov 25, 2025 · When we think about solar energy, it's easy to picture sun-soaked rooftops in the middle of summer. But what happens when temperatures drop and the days get shorter? Is ...



[Winter Solar Power Challenges and Solutions](#)

Jan 5, 2024 · As winter sets in, the efficiency of solar power systems can be affected by various factors such as reduced sunlight hours, snow ...



[Solar PV Analysis of Hargeisa, Somalia](#)

Jul 15, 2024 · During Winter, adjust your solar panels to a 25° angle towards the South for optimal energy production. Lastly, in Spring, position your panels at a 3° angle facing South to capture ...



[How to generate electricity with solar energy when it snows in winter](#)

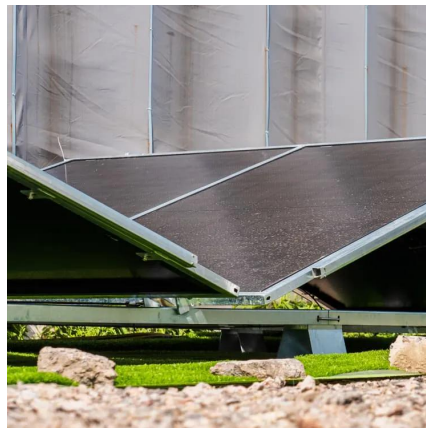
Aug 8, 2024 · Electricity generation using solar energy during snowy winter conditions poses unique challenges but remains feasible. 1. Solar panels can still operate under snow, as ...





[How to generate electricity with solar energy ...](#)

Aug 8, 2024 · Electricity generation using solar energy during snowy winter conditions poses unique challenges but remains feasible. 1. Solar panels ...



[Do Solar Panels Work in Winter? Debunking ...](#)

Mar 6, 2025 · Wondering if solar panels work in winter? Learn the facts about efficiency, snow impact, and how solar energy continues to save you ...

[Hargeisa Solar Photovoltaic Power Generation System](#)

This system has a generation capacity of 25 KWp using 76 pcs of 340 Wp solar panels and the storage capacity of 62.4KWh using 13 pcs of 100 Ah Bolt power lithium ion batteries. The ...



[Factors affecting photovoltaic power ...](#)

In winter, daylight hours are shorter, the solar altitude angle is at its lowest, and solar irradiance is the weakest of all seasons. As a result, the ...



[Solar PV Analysis of Hargeisa, Somalia](#)

Jul 15, 2024 · During Winter, adjust your solar panels to a 25° angle towards the South for optimal energy production. Lastly, in Spring, position your ...



[Winter Solar Power Challenges and Solutions](#)

Jan 5, 2024 · As winter sets in, the efficiency of solar power systems can be affected by various factors such as reduced sunlight hours, snow accumulation on solar panels, and colder ...

[Factors affecting photovoltaic power generation in winter](#)

In winter, daylight hours are shorter, the solar altitude angle is at its lowest, and solar irradiance is the weakest of all seasons. As a result, the seasonal output curve of photovoltaic (PV) power ...



[Will Solar Panels Work Properly in Snowy Weather and Winter?](#)

Dec 8, 2025 · Winter solar performance depends on temperature, sunlight intensity, snow coverage, tilt angle, and maintenance. With proper setup, solar power can remain reliable ...



Contact Us

For technical specifications, project proposals, or partnership inquiries, please visit:
<https://www.bukhobuhle.co.za>

Scan QR Code for More Information



<https://www.bukhobuhle.co.za>