

Rural communication network base station





Overview

What is a base station in telecommunications?

In telecommunications, a base station is a fixed transceiver that serves as the main communication point for one or more wireless mobile client devices. It not only connects wireless devices to each other but also links them to other networks or devices, often through dedicated high-bandwidth wired or fiber optic connections.

What is a cellular base station?

In many modern networks, especially cellular networks, base stations often take the form of cell towers. These towers can range in size and scope—from large structures that provide coverage for many miles in rural areas to compact microcells serving just a few city blocks in dense urban environments.

Why are base stations important for modern telecommunications?

In summary, base stations are critical for modern telecommunications as they serve as the link between mobile devices and the extensive network infrastructure that spans the globe. The strategic deployment and ongoing improvement of these stations are essential for maintaining global connectivity.

What are base stations used for?

In addition to supporting traditional mobile communication, base stations also play a vital role in two-way radio systems such as citizens band (CB) radio and ham radio. These fixed base stations are commonly used by dispatchers to communicate directly with multiple mobile operators in the field.



Rural communication network base station



[Base Station's Role in Wireless Communication Networks](#)

What is a base station? A base station is a critical component of wireless communication networks. It serves as the central point of a network that connects various devices, such as ...

[Village Base Station \(Community Cellular Networks\) . CEGA](#)

Nov 29, 2025 · Today over one billion people worldwide live beyond the reach of cellular networks. Many live in sparsely populated rural regions, with weak power infrastructure, ...



[Village Base Station \(Community Cellular ...](#)

Nov 29, 2025 · Today over one billion people worldwide live beyond the reach of cellular networks. Many live in sparsely populated rural regions, ...



[MTN Nigeria and Huawei Complete World's First RuralCow ...](#)

Nov 11, 2025 · MTN Nigeria and Huawei have completed the commercial deployment of the inclusive RuralCow solution, a rapid-deployment, all-in-one mobile base station that provides ...



[What Is A Base Station?](#)

Apr 22, 2024 · A base station is an integral component of wireless communication networks, serving as a central point that manages the transmission and reception of signals between ...



[Cellular Networks, Cells, and Base Stations -- EITC](#)

Aug 15, 2009 · A network for wireless communications is comprised of a large number of base stations to efficiently use radio spectrum to cover the service area. A cell typically uses a ...



[Base stations and networks](#)

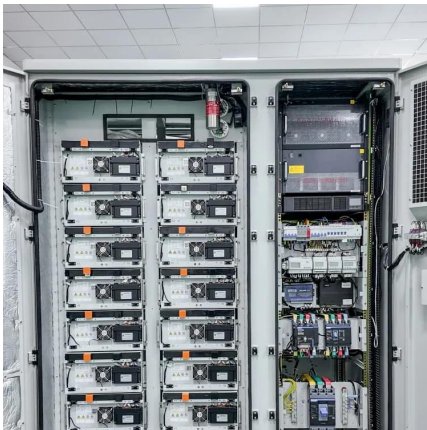
5 days ago · Base stations enable mobile communications Mobile phones and other mobile devices require a network of base stations in order to function. The base station antennas ...





[Design and implementation of LoRaWAN autonomous base station ...](#)

Design and implementation of LoRaWAN autonomous base station as a communication network for rural areas This study designed and implemented a low power LoRaWAN autonomous ...

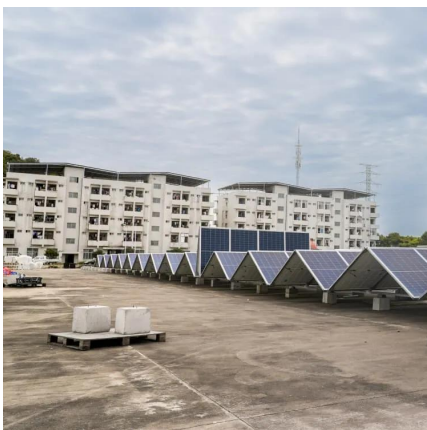


[Aerial Base Stations for Global Connectivity: Is It a Feasible ...](#)

Aug 25, 2023 · Even though achieving global connectivity represents one of the main goals of 5G and beyond wireless networks, exurban areas are still suffering frequent outages because of ...

[Base Stations: The Core and Future of Telecom Networks](#)

Sep 12, 2025 · In today's digital era, telecom base stations play a central role in connecting billions of devices. Whether you're in a bustling urban center or a rural area, mobile devices ...



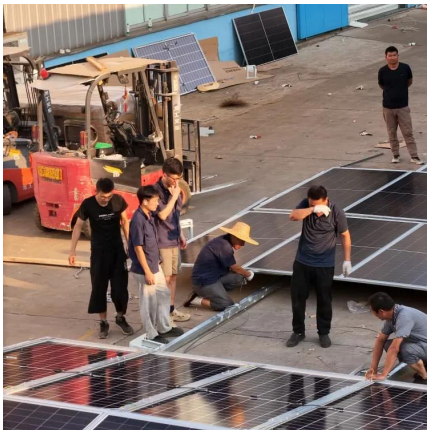
[Application scenarios of LoRa network in rural ...](#)

The existing commercial 4G or 5G LTE communication networks, utilizing the transmission of data packets through the well-established Internet ...



[Base station hardware evolution in urban vs rural 5G ...](#)

Jul 14, 2025 · The evolution of base station hardware in 5G deployments reflects the diverse needs of urban and rural environments. Urban areas demand high-capacity, densely packed ...



[Mobile Communication Network Base Station Deployment ...](#)

Apr 13, 2025 · This paper discusses the site optimization technology of mobile communication network, especially in the aspects of enhancing coverage and optimizing base station layout. ...

[5G base stations to proliferate widely](#)

5 days ago · Xie said that China so far has already built more than 1.15 million 5G base stations, accounting for more than 70 percent of the global total, and 5G network coverage has been ...



[RuralStar: Having every corner of the world connected](#)

Nov 24, 2021 · On the first day of the village's mobile communications network, villagers sang and danced together to celebrate, because the communications base station will change their lives ...



[How Base Stations Enhance Mobile Coverage in Rural Areas](#)

Aug 28, 2025 · Base Stations form the backbone of mobile communication networks, enabling devices to connect to cellular services. In rural areas, they play a critical role in overcoming ...



Basestation

The base station is a transceiver and acts as an interface between a mobile station and network using microwave radio communication. It consist of three part elements: one or more ...



[Understanding Base Stations: The Backbone of Wireless Communication](#)

Jan 6, 2025 · Additionally, 5G base stations will rely heavily on network slicing and edge computing to provide customized network experiences for different applications, ranging from ...



[Design and Implementation of LoRaWAN Autonomous Base Station ...](#)

Request PDF , On Dec 1, 2022, John Benedict M. Carbonel and others published Design and Implementation of LoRaWAN Autonomous Base Station as a Communication Network for ...



[Optimizing the ultra-dense 5G base stations in urban ...](#)

Dec 1, 2020 · The developed model can facilitate the rollout of 5G technology. Due to the high propagation loss and blockage-sensitive characteristics of millimeter waves (mmWaves), ...



Contact Us

For technical specifications, project proposals, or partnership inquiries, please visit:
<https://www.bukhobuhle.co.za>

Scan QR Code for More Information



<https://www.bukhobuhle.co.za>