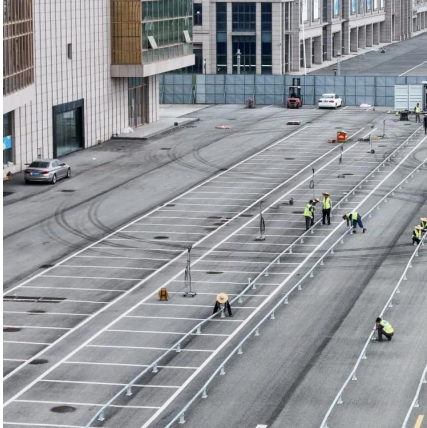


Related content about battery solar container energy storage system for solar container communication stations





Related content about battery solar container energy storage system



["relating to" vs "related to" . WordReference Forums](#)

Sep 1, 2015 · Related (adj) things that are related, are connected in some ways "He suffers with memory loss related to his disease."
Relating to (preposition) about or concerning
"Documents ...

expressions

Nov 10, 2025 · What is the context? If the heading refers to things you produced in the same or relevant subject area, then work is uncountable, and the heading should be Related Work. If ...



[related to / related with . WordReference Forums](#)

Nov 16, 2007 · Hi, what the correct way to say it:
1.- related to the present document 2.- related with the present document thanks -- please correct all my mistakes



word choice

Nov 12, 2025 · I read this sentence in a book.
However, it does not solve specific problems relating to a business or a profession. I, myself, often use related to instead of relating to. Is ...



relate to/be related to

Dec 28, 2011 · In the dictionary, relate to means "be concerned with", so I am wondering what is the difference between relate to and be related to? Such as, The book relates to wildlife. The ...



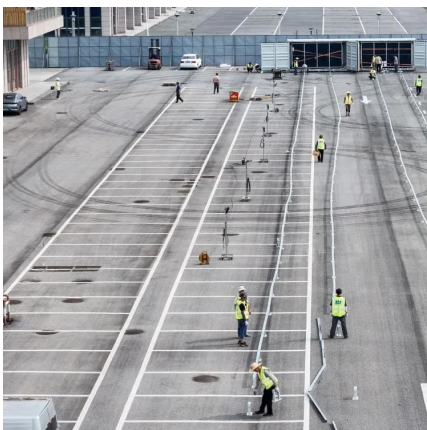
grammar

Jul 17, 2015 · (Be) related to is a kinship term, a reciprocal predicate adjective -- She's related to him/He's related to her/He and she are related. It's formed from the past participle of relate, a ...



adjectives

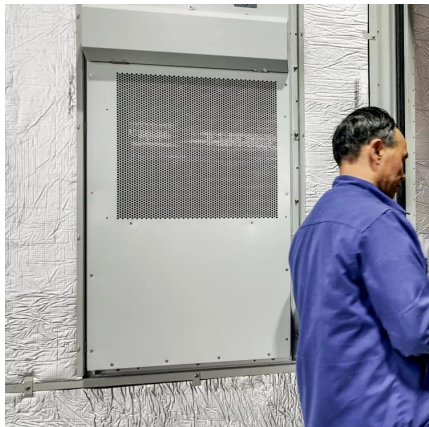
Oct 17, 2025 · What is the correct use of the term "related?" For example, should I use it like computer related, or is it more proper to use computer-related (where the word "computer" is ...





[When do you use "relate to" versus "relate with"?](#)

Dec 30, 2016 · 2- "Related with" could be used when the meaning of the verb is about communication, and often in past tense and passive voice. Hypothetically, also when "relate" ...



[related to or related with . WordReference Forums](#)

Mar 22, 2009 · Don't you think that "to" is the only correct preposition to use with "related" when the meaning is "connected to", acme? After all, it's just a metaphor: I am related to the other ...

[non-work related or non-work-related? . WordReference ...](#)

Oct 1, 2014 · Hello everybody! I'm writing an email to celebrate our long-term relationship suppliers for their National Day. I intend to start with "Dear xxx, this email is non work related" ...



Contact Us

For technical specifications, project proposals, or partnership inquiries, please visit:
<https://www.bukhobuhle.co.za>



Scan QR Code for More Information



<https://www.bukhobuhle.co.za>