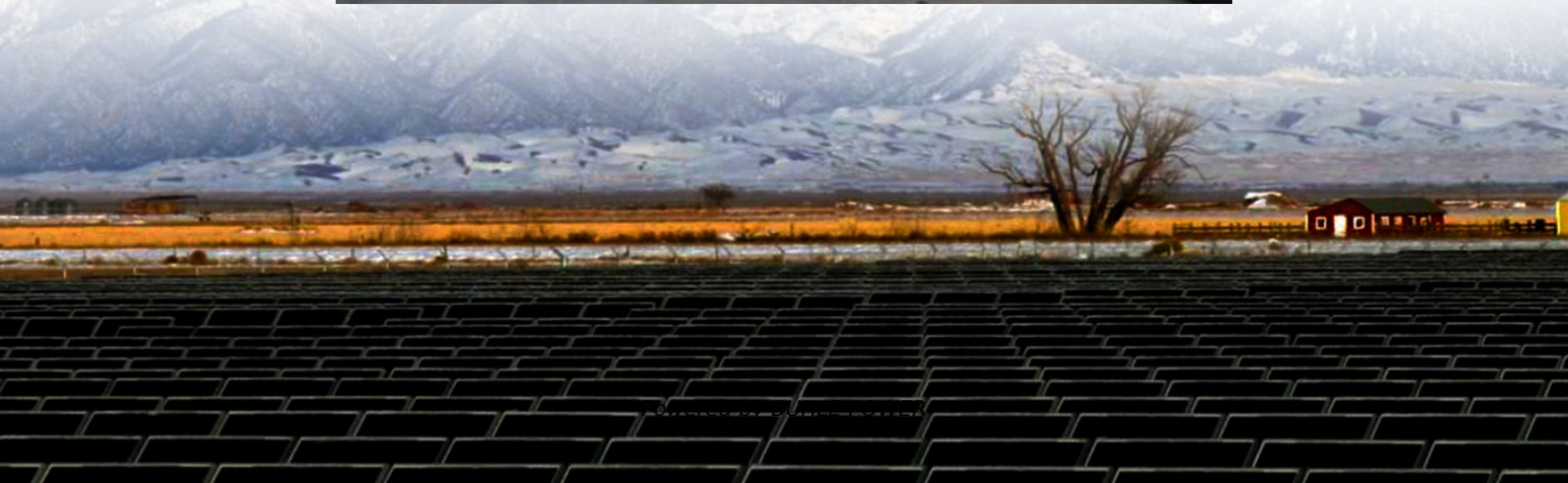


Recommendation of small and medium-sized outdoor power supplies





Overview

What spec should you consider when buying a power station?

Whatever the reason you are purchasing a power station, the most important spec to pay attention to is watt hours, which is a measurement of how much energy the power station can hold. While a particular power station might claim to hold 1,000 watt hours, the actual amount of usable power you can get out of it is a different story.

How often should a portable power station be re-upped?

While all portable power stations should have their power re-upped on a regular basis (plan for every three months), my testing showed that some portable power stations did a better job of retaining power over that period of time than others.

How do I choose the right portable power station size?

If all you have is a basic wattage number, say for a light bulb, typically that can serve as the watt hour number. For instance, if you are trying to power a 40-watt light bulb for one hour, it will use 40 watt hours. When choosing the right portable power station size for your needs, tack about 30 percent on to account for power loss while in use.

What is the best portable power station?

A heavyweight beast of a power station, this unit boasts battery expansion, loads of ports, and the high battery capacity and output required to effectively run an RV, offer home back-up power supply, charge an EV, or help you live van life to the fullest. Read more below 4. Jackery Explorer 1000 V2 Best portable power station for on-site work



Recommendation of small and medium-sized outdoor power supplies

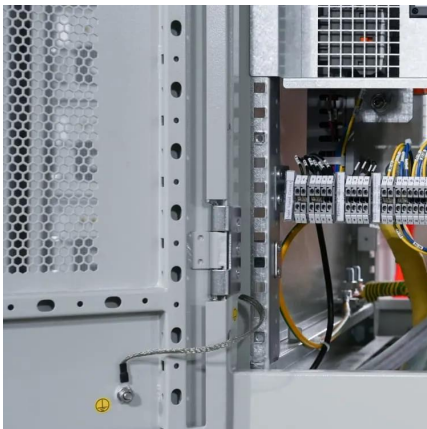


[How to choose an outdoor power supply?](#)

Dec 26, 2024 · The only purpose of this article is to save your time with the data I have compiled and to provide you with a comprehensive introduction: What is an outdoor power supply?
...

[How to Choose an Outdoor Power Supply in 2025: From ...](#)

Jul 3, 2025 · The power capacity of the outdoor power supply is a primary consideration. Here's how to determine which one suits your needs:
500W to 1000W Power: Ideal for small devices ...

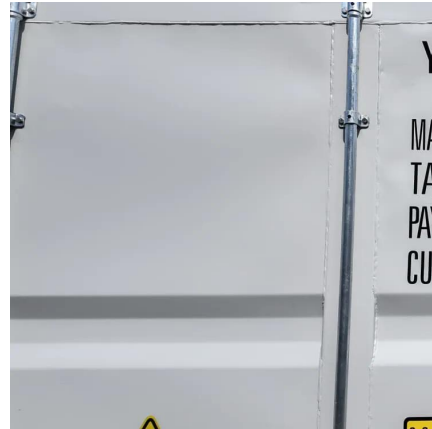


[How to choose an outdoor power supply?](#)

Dec 26, 2024 · The only purpose of this article is to save your time with the data I have compiled and to provide you with a comprehensive ...

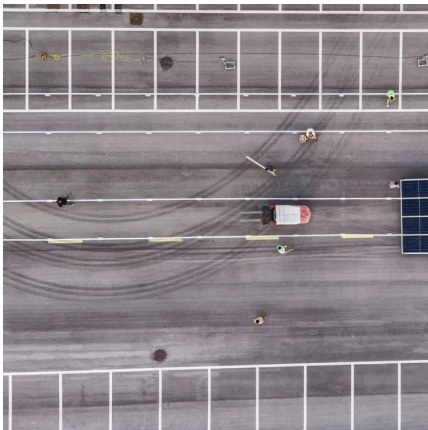
[Right Outdoor Power Configuration: Choose the Best Setup](#)

Jul 30, 2025 · Find the right outdoor power configuration for your needs. Learn about amperage, voltage, and safety to ensure efficient power distribution.



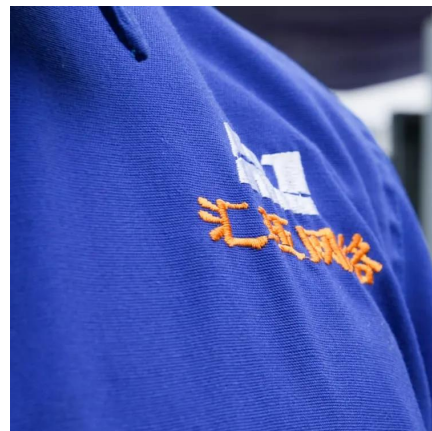
[How to Choose the Right Outdoor Power Supply](#)

Mar 13, 2025 · Find out how to select the ideal outdoor power supply for camping, work, emergencies, and more with this easy-to-follow expert guide.



[The Ultimate Guide to Choosing Outdoor DC Power Supply ...](#)

In conclusion, selecting the right outdoor DC power supply involves understanding your specific needs, the environment in which it will operate, and the products available. By considering the ...



[How to Choose the Right Outdoor Power ...](#)

Mar 13, 2025 · Find out how to select the ideal outdoor power supply for camping, work, emergencies, and more with this easy-to-follow expert guide.





[What Size Portable Power Station Do I Need](#)

Jan 5, 2025 · A typical small power station weighs anywhere from 3 to 8 pounds, making it highly portable and ideal for short trips or to throw in a car for emergency use. Medium-sized power ...



[Choosing the Right Outdoor Power Supply for Your Needs](#)

May 22, 2025 · Discover how to choose the ideal outdoor power supply for your needs, exploring options like portable generators and solar power banks.

[Best Portable Power Stations of 2025, Tested and Reviewed ...](#)

May 6, 2025 · Find the best portable power stations for your backcountry and frontcountry plans, based on extensive, hands-on testing.



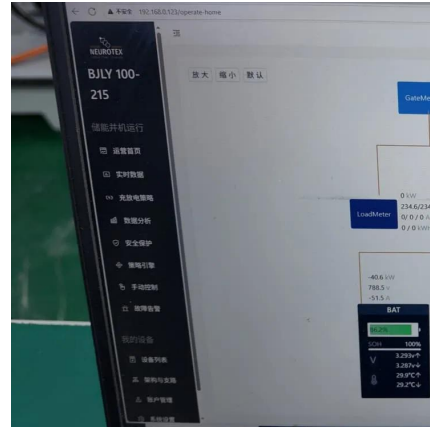
[How to choose an outdoor power supply?](#)

Jun 8, 2023 · Discover how to choose the right outdoor power supply with Topwell Power's guide. Explore their LiFePO4 battery 500W power supply with USB Type A, Type C, and car charger ...



[Best Portable Power Stations of 2025. Tested and Reviewed](#)

May 6, 2025 · Find the best portable power stations for your backcountry and frontcountry plans, based on extensive, hands-on testing.

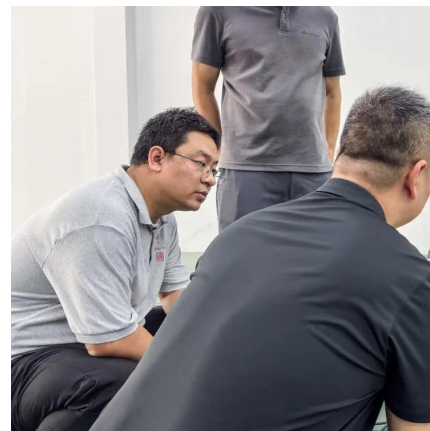


[Best portable power station of 2025: Tested for real-world](#)

Oct 1, 2025 · Best portable power station overall
An excellent blend of power, portability, and some advanced features.

[Best portable power station of 2025: Tested for real-world ...](#)

Oct 1, 2025 · Best portable power station overall
An excellent blend of power, portability, and some advanced features.



[How to choose an outdoor power supply?](#)

Jun 8, 2023 · Discover how to choose the right outdoor power supply with Topwell Power's guide. Explore their LiFePO4 battery 500W power ...



Contact Us

For technical specifications, project proposals, or partnership inquiries, please visit:
<https://www.bukhobuhle.co.za>

Scan QR Code for More Information



<https://www.bukhobuhle.co.za>