

Polish solar container communication station wind and solar complementary approval





Overview

Will Axpo take solar power from RWE renewables Poland?

Axpo will offtake a combined 1,500GWh of solar PV and wind power annually from RWE Renewables Poland's 628MW capacity project portfolio. The companies did not disclose the duration of the PPA. RWE entered the Polish market in 2007, and has since reached over 150MW of solar PV operational or under development.

Who is RWE renewables Poland?

RWE Renewables Poland operates wind farms with a total installed capacity of 541 MW and a total solar capacity of 54 MWac, and is developing further green projects. Building on its long-established renewables business in Poland, RWE is currently developing its first Polish offshore project, which is the F.E.W. Baltic II offshore wind farm.

What is the energy policy of Poland 2040?

The Energy Policy of Poland 2040 (PEP2040) outlines a path to carbon neutrality by 2050, reducing reliance on coal while expanding solar, wind, and nuclear power. Key targets include 45 GW of solar, 41 GW of onshore wind, and 18 GW of offshore wind by 2040.

Is Axpo a win-win for Poland's energy transition?

Robert Macias, RWE Renewables Poland board member, said: "With Axpo on our side the green electricity produced by our wind and solar fleet will be efficiently marketed – a win-win for the Polish energy transition." Much of RWE's recent activity has been in the larger markets of the US and Germany.



Polish solar container communication station wind and solar comple



[Communication base station wind and solar ...](#)

Dec 6, 2025 · Overview A communication base station, wind-solar complementary technology, applied in the field of new energy communication, can solve the problems of inability to utilize ...

[RWE, Axpo sign 628MW Polish solar and wind PPA](#)

Aug 29, 2024 · Axpo will offtake a combined 1,500GWh of solar PV and wind power annually from RWE Renewables Poland's 628MW capacity project portfolio.



[Zaloguj sie lub zarejestruj](#)

Polskiego nie mialem mozliwosci uczyc sie inaczej jak tylko online, wiec bez przekonania, ale zarejestrowalem sie na kurs na e-polish . Ku mojemu zdziwieniu, tutaj po raz pierwszy ...

[Poland's Renewable Energy Transformation: Solar, Wind, and ...](#)

Jun 29, 2025 · Poland's renewable energy growth--solar energy Poland, wind, biomass, and hydropower trends--plus key policies, challenges, and expert guidance.



[EDPR's first hybrid wind-solar photovoltaic \(PV\) project in Poland](#)

Mar 2, 2025 · By integrating the Konary photovoltaic plant with the established Golancz wind farm, we took advantage of the complementary nature of wind and solar resources and enhanced ...



[RWE is taking big steps forward in expanding ...](#)

Jul 31, 2024 · RWE Renewables Poland operates wind farms with a total installed capacity of 541 MW and a total solar capacity of 54 MWac, and ...



[E-polish an e-learning platform for teaching Polish as a ...](#)

E-polish platform Materials and tools for teaching Polish to foreigners The e-polish platform is an exceptionally rich resource with a variety of materials and tools for teaching Polish as a ...





Polnisch für Ausländer

Außerdem ist e-polish eine reichhaltige Sammlung verschiedener Tools, die dir dabei helfen, deinen Unterricht vorzubereiten und abzuhalten - du kannst ganz einfach eigene Übungen ...



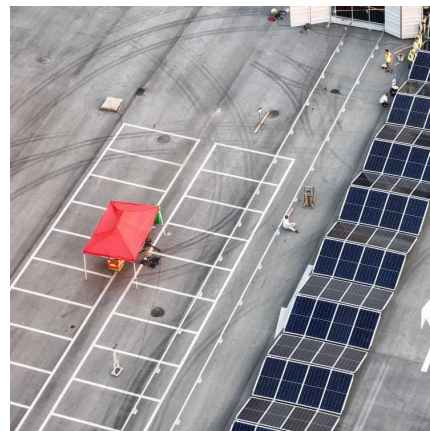
Polish courses online

Take up the challenge and learn Polish online without leaving home through the e-polish platform. The self-study courses we offer have been developed for both independent learners ...



Evaluation of the value of wind and solar complementary ...

What is the complementary coefficient between wind power stations and photovoltaic stations? Utilizing the clustering outcomes, we computed the complementary coefficient R between the ...



Kursy języka polskiego online: e-polish

Podejmij wyzwanie i ucz się języka polskiego online bez wychodzenia z domu za pośrednictwem platformy e-polish . Proponowane przez nas kursy self-study zostały stworzone z myślą ...



[Online multimedia dictionary of the Polish language](#)

In the online Polish dictionary, additional information is presented which is extremely helpful for participants in the Polish course for foreigners. Specifically, all forms of declension are ...



[RWE successful with 31 solar projects in Polish auction](#)

Jan 3, 2025 · We are looking forward to delivering the next projects to further support the Polish energy transition." RWE in Poland - a key driver of the energy transition RWE is a key player ...



[Regulations on the location of wind and solar complementary](#)

Analyzing the complementarity of wind and solar energies requires the collection of multidisciplinary information, in which the primary criterion for deliberating the implementation ...



[5G communication base station wind and solar complementary ...](#)

6 FAQs about [5G communication base station wind and solar complementary framework] Do 5G communication base stations have multi-objective cooperative optimization?



[???????? ???? ??? ????????????](#)

?? ??????? e-polish ?? ??????? ?????? ??????????
?????????? ????????????, ??????? ? ????????????,
????????? ??????? ???? ?????? ??????? ??? ?????.



[Polish for foreigners, and Polish language courses: e-polish](#)

If you want to learn Polish... kursy online slownik multimedialny interfejs w kilku jezykach modul powtorzkowy forum dyskusyjne blog You've found the perfect place, because the e-polish ...

[RWE, Axpo sign 628MW Polish solar and wind ...](#)

Aug 29, 2024 · Axpo will offtake a combined 1,500GWh of solar PV and wind power annually from RWE Renewables Poland's 628MW capacity project ...



[Polish online course for beginners](#)

POLSKI krok po kroku 1 - Polish online course
Polish language course at level A1/A2 (beginner)
If you are just starting to learn Polish or you only know the basics, "POLSKI krok po kroku 1" ...



[EDPR's first hybrid wind-solar photovoltaic](#)

Mar 2, 2025 · By integrating the Konary photovoltaic plant with the established Golancz wind farm, we took advantage of the complementary ...

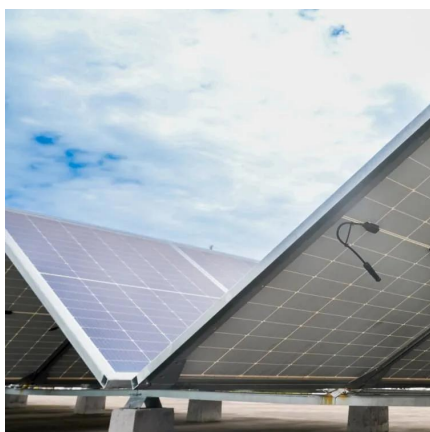


[Operating communication base stations with wind and...](#)

The wind-solar-diesel hybrid power supply system of the communication base station is composed of a wind turbine, a solar cell module, an integrated controller for hybrid energy

[RWE successful with 31 solar projects in ...](#)

Jan 3, 2025 · We are looking forward to delivering the next projects to further support the Polish energy transition." RWE in Poland - a key driver of the ...



Strona główna

Strona główna - Od blisko 30 lat dzielimy się pasją do nauczania języka polskiego z ludźmi z całego świata. W 1997 roku założyliśmy Szkołę Języka Polskiego GLOSSA i do dziś uczymy ...



[RWE is taking big steps forward in expanding its Polish solar ...](#)

Jul 31, 2024 · RWE Renewables Poland operates wind farms with a total installed capacity of 541 MW and a total solar capacity of 54 MWac, and is developing further green projects. Building ...



Contact Us

For technical specifications, project proposals, or partnership inquiries, please visit:
<https://www.bukhobuhle.co.za>

Scan QR Code for More Information



<https://www.bukhobuhle.co.za>