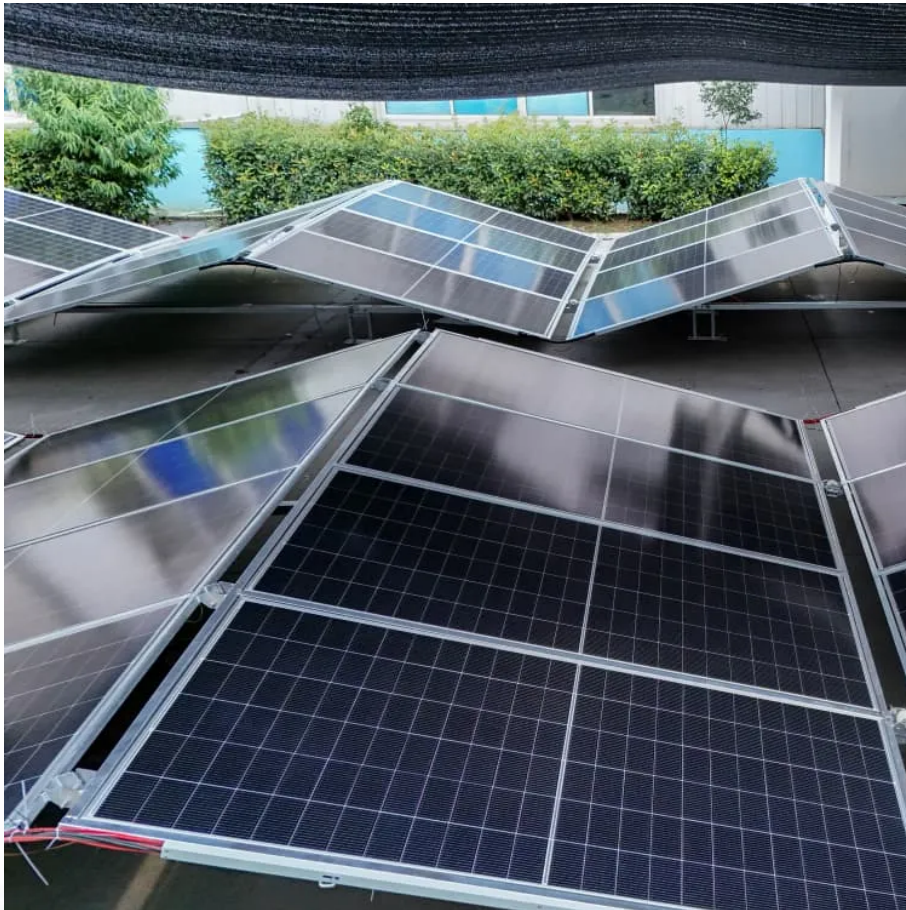


# **Outdoor base station debugging**





## Overview

---

What is Damm bs421 outdoor system?

Mast-mountable and compact IP65-encapsulated TETRA system, a powerful base station transceiver and distributed controller ideal for outdoor or indoor mounting. The DAMM BS421 Outdoor System is a mast-mountable and compact IP65-encapsulated TETRA communication system.

What is a Damm outdoor system?

The DAMM Outdoor System is the most user-friendly, flexible and cost-effective TETRA infrastructure system available. With its high reliability and unique design it is the ideal solution for mission-critical communications.

How to ground zxsdrr bs8908 g060?

ZXSDR BS8908 G060 User Manual grounding terminal, and end B of the cable is the round metal bare terminal, which is called cabling lug or copper lug, as shown in Figure 5-30. Figure 5-30 Grounding Cable Structure Steps 1. Hang the copper lugs at end A of the grounding cable on the two grounding bolts of the BS8908 cabinet, and fix them. 1.

Are Damm base stations IOP certified?

As an independent TETRA infrastructure provider DAMM Base Stations are IOP certified for full compatibility with all TETRA terminals, providing you with the option to freely choose your favourite terminal brand.



## Outdoor base station debugging

---

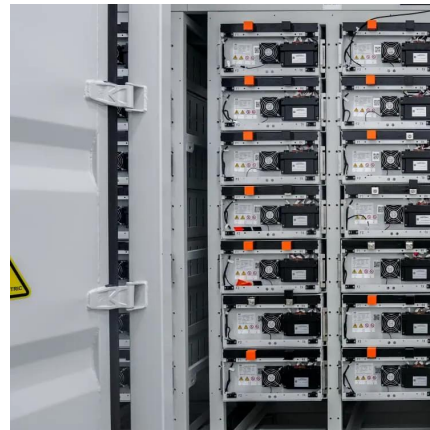


### [CableFree Outdoor 4G & 5G LTE SDR Small Cell Base Station](#)

Experience CableFree's 4G & 5G LTE Small Cell outdoor base stations with software-defined radio for great flexibility, high performance & low operation costs.

### [Huawei communication base station hybrid energy debugging](#)

Huawei is accelerating the digital transformation of base stations by adopting AI and IoT. Harnessing these digital technologies, 5G Power optimizes coordinated scheduling between ...



### [BS421 Outdoor TETRA Base Stations](#)

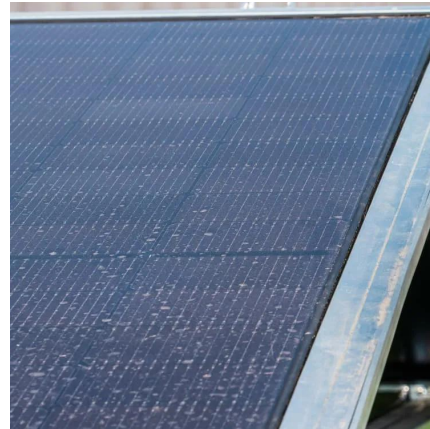
The DAMM Outdoor System is the most user-friendly, flexible and cost-effective TETRA infrastructure system available. With its high reliability and unique design it is the ideal solution ...



### [Research and application of on-site debugging technology ...](#)

Oct 29, 2023 · For the field debugging of primary and secondary fusion DTU/FTU, an independent electromagnetic/ electronic signal output channel and high-precision output technology are ...





### [Integration of Outdoor Base Station and Amarisoft 5G Core](#)

Aug 14, 2023 · The primary objective of this project work is to integrate an outdoor base station and the Amarisoft-5G Core to build a fully working 5G standalone (SA) network.



### [Soetek's Highly Integrated Telecom Power System Solves Outdoor Base](#)

Jul 8, 2025 · In contrast, Soetek's outdoor power base station solution reduces the installation and debugging time by nearly 40% per station, while failure rates drop by over 60%. Its ...



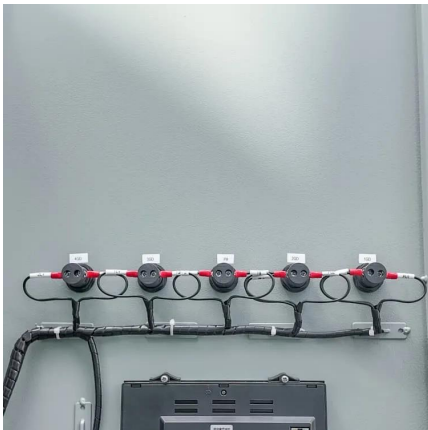
### [Unity\(TM\) 4+5G Outdoor Integrated Base Station](#)

May 9, 2025 · SageRAN Unity(TM) 4+5G Outdoor Integrated Base Station is a highly efficient 4+5G base station designed for outdoor use. It features an integrated 4 and 5G BBU and RRU, and ...



### Soetec's Highly Integrated Telecom Power ...

Jul 8, 2025 · In contrast, Soetec's outdoor power base station solution reduces the installation and debugging time by nearly 40% per station, ...



### Communication Base Station

The design and implementation of Tian-Power's communication backup solution aims to ensure the normal operation of the communication system in the event of a power outage or power ...

## Contact Us

---

For technical specifications, project proposals, or partnership inquiries, please visit:  
<https://www.bukhobuhle.co.za>

**Scan QR Code for More Information**



<https://www.bukhobuhle.co.za>