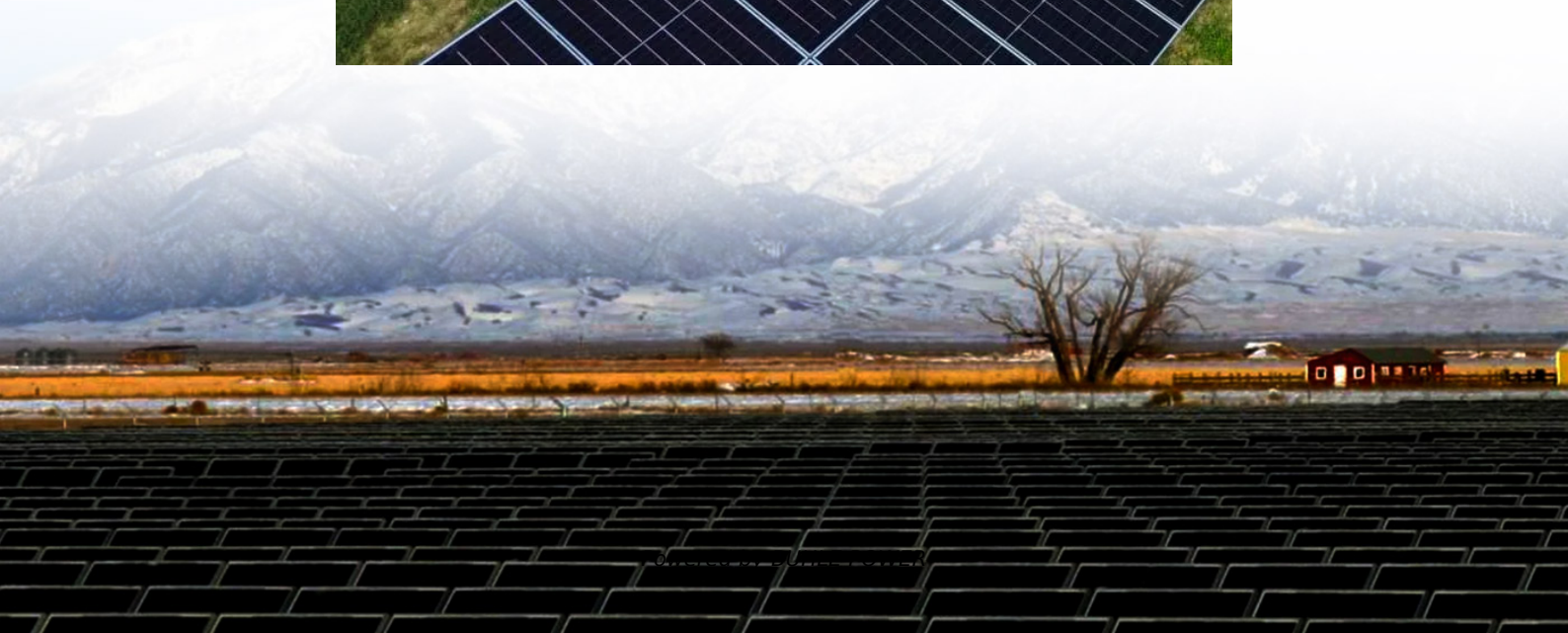


# **Outdoor base station battery strength standard is**





## Overview

---

Which battery is best for telecom base station backup power?

Among various battery technologies, Lithium Iron Phosphate (LiFePO<sub>4</sub>) batteries stand out as the ideal choice for telecom base station backup power due to their high safety, long lifespan, and excellent thermal stability.

What makes a telecom battery pack compatible with a base station?

Compatibility and Installation Voltage Compatibility: 48V is the standard voltage for telecom base stations, so the battery pack's output voltage must align with base station equipment requirements. Modular Design: A modular structure simplifies installation, maintenance, and scalability.

What is a wide temperature range LiFePO<sub>4</sub> battery?

This translates to lower replacement frequency and maintenance costs. Wide Temperature Range LiFePO<sub>4</sub> batteries operate reliably in temperatures ranging from -20°C to 60°C, making them suitable for the diverse and often extreme environments of telecom base stations.

How do you protect a telecom base station?

Backup power systems in telecom base stations often operate for extended periods, making thermal management critical. Key suggestions include: Cooling System: Install fans or heat sinks inside the battery pack to ensure efficient heat dissipation.



## Outdoor base station battery strength standard is

---



### [Which Battery Is Best for Outdoor Power Stations?](#)

When selecting a battery for outdoor power stations, it's essential to understand that the battery is the core factor that determines the unit's performance. Whether for camping, hiking, or ...

### [Telecom Base Station Backup Power Solution: Design Guide ...](#)

Jun 5, 2025 · Discover the 48V 100Ah LiFePO4 battery pack for telecom base stations: safe, long-lasting, and eco-friendly. Optimize reliability with our design guide.



### [Outdoor base station battery module](#)

Big Data Product With the widespread deployment of its IDC hardware systems to all over the world, the shipments of computing power and communication centers rank among the top ...

### [Ultimate Guide to Base Station Power Selection: Lithium vs.](#)

Nov 17, 2025 · The key is to align the base station's environment, power demand, O& M capability, and budget with the strengths of each battery type, ultimately achieving stable power supply, ...



### [Understanding Backup Battery Requirements ...](#)

Mar 7, 2025 · Telecom base stations require reliable backup power to ensure uninterrupted communication services. Selecting the right backup battery ...



### [How about base station energy storage ...](#)

Apr 7, 2024 · This section delves into the different types of batteries commonly used in base station energy storage and evaluates their ...



### [Telecom Base Station Backup Power Solution: ...](#)

Jun 5, 2025 · Discover the 48V 100Ah LiFePO4 battery pack for telecom base stations: safe, long-lasting, and eco-friendly. Optimize reliability with ...





## [Base Station Energy Storage](#)

A base station energy storage system is a compact, modular battery solution designed to ensure uninterrupted power supply for telecom base stations. It supports stable operations during grid ...

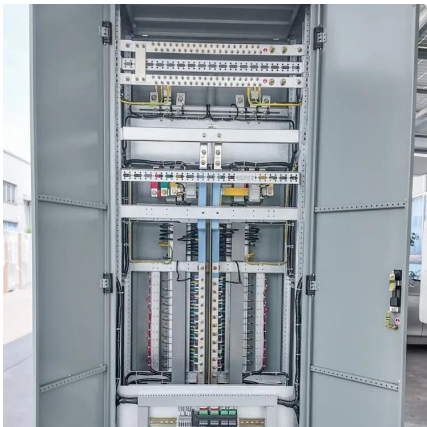


## [How about base station energy storage batteries .NenPower](#)

Apr 7, 2024 · This section delves into the different types of batteries commonly used in base station energy storage and evaluates their respective strengths and weaknesses. Lithium-ion ...

## [Base station battery pack current standard](#)

Nov 4, 2025 · Which battery is best for telecom base station backup power? Among various battery technologies, Lithium Iron Phosphate (LiFePO4) batteries stand out as the ideal choice ...



## [Understanding Backup Battery Requirements for Telecom Base Stations](#)

Mar 7, 2025 · Telecom base stations require reliable backup power to ensure uninterrupted communication services. Selecting the right backup battery is crucial for network stability and ...



### [Telecom Base Station Backup Battery](#)

Frame design, 19" standard cabinet installation, 48V base station, and 240V HVDC system The 48V rack-mounted Communication Lithium-ion battery is designed specifically for the ...



### [How to Select the Best ESTEL Battery Backup for Base Stations](#)

May 29, 2025 · Choose the best telecom battery backup systems by evaluating capacity, battery type, environmental adaptability, maintenance, and scalability for base stations.

## Contact Us

---

For technical specifications, project proposals, or partnership inquiries, please visit:  
<https://www.bukhobuhle.co.za>

**Scan QR Code for More Information**



<https://www.bukhobuhle.co.za>