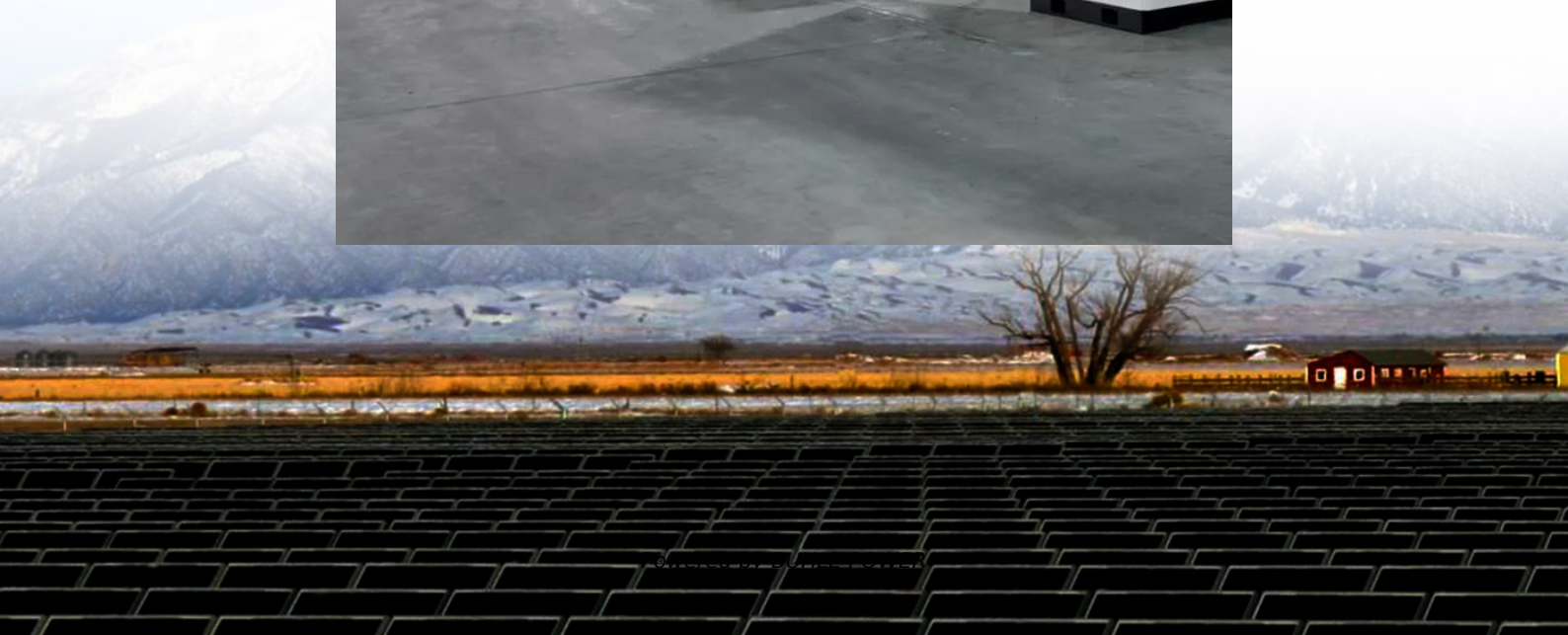


# **Layout planning of wind and solar complementary solar container communication stations in Ljubljana**





## Overview

---

Can a multi-energy complementary power generation system integrate wind and solar energy?

Simulation results validated using real-world data from the southwest region of China. Future research will focus on stochastic modeling and incorporating energy storage systems. This paper proposes constructing a multi-energy complementary power generation system integrating hydropower, wind, and solar energy.

What is a capacity optimization model for a wind-solar-hydro-storage multi-energy complementary system?

This paper develops a capacity optimization model for a wind-solar-hydro-storage multi-energy complementary system. The objectives are to improve net system income, reduce wind and solar curtailment, and mitigate intraday fluctuations.

What is the optimal configuration for a solar power plant?

The model achieves an optimal configuration comprising 176.03 MW of wind power, 273.71 MW of photovoltaic capacity, and 20.34 MW × 2.99 h of energy storage, fully meeting investment and land use constraints.

Is a multi-energy complementary wind-solar-hydropower system optimal?

This study constructed a multi-energy complementary wind-solar-hydropower system model to optimize the capacity configuration of wind, solar, and hydropower, and analyzed the system's performance under different wind-solar ratios. The results show that when the wind-solar ratio is 1.25:1, the overall system performance is optimal.



## Layout planning of wind and solar complementary solar container c

---



### [Collaborative Planning of Power Lines and Storage ...](#)

Jul 4, 2023 · Abstract For promoting the coordinated development of clean energy and power grids, this paper took large-scale adoption of wind and solar energy as planning goals and ...

### [The latest requirements for wind and solar complementary ...](#)

What is the complementary coefficient between wind power stations and photovoltaic stations? Utilizing the clustering outcomes, we computed the complementary coefficient  $R$  ...



### [Capacity planning for wind, solar, thermal and energy ...](#)

Nov 28, 2024 · In this context, capacity planning for complementary wind energy, solar energy, and energy storage systems can be an important research direction to enhance the integration ...



### [How to configure wind and solar complementary communication ...](#)

A communication base station, wind-solar complementary technology, applied in the field of new energy communication, can solve the problems of inconvenience, inability to utilize wind



### [Optimal Configuration and Empirical Analysis of a Wind-Solar...](#)

Jul 29, 2025 · This paper develops a capacity optimization model for a wind-solar-hydro-storage multi-energy complementary system. The objectives are to improve net system income, ...



### **Optimal design analysis of wind solar complementary power stations ...**

Feb 27, 2022 · Wind solar complementary power generation system uses the complementarity of wind energy and solar energy to improve the overall energy utilization efficiency, and the ...



### **Assessment of offshore wind-solar energy potentials and spatial layout**

Nov 1, 2023 · Developing offshore wind and solar energy presents a promising solution to reduce carbon emissions. Yet, there has been little focus on the co-location of offshore wind and solar ...

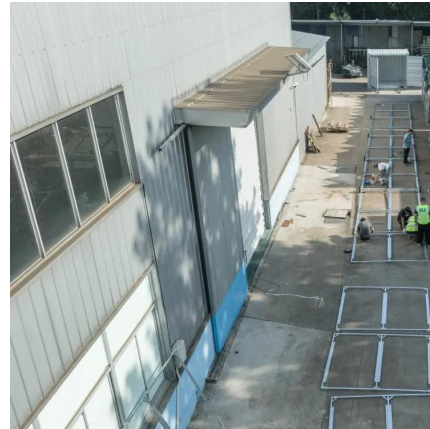






### [Capacity planning for wind, solar, thermal and ...](#)

Nov 28, 2024 · In this context, capacity planning for complementary wind energy, solar energy, and energy storage systems can be an important ...



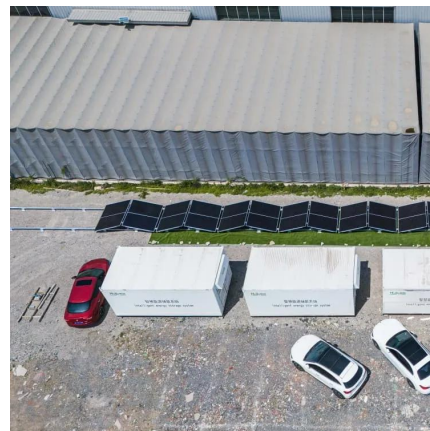
### [Optimal Design of Wind-Solar complementary power ...](#)

Dec 15, 2024 · Considering capacity configuration and optimization of the complementary power generation system, a dual-layer planning model is constructed. The outer layer aims to ...



### [Construction of wind and solar complementary ...](#)

Dec 1, 2025 · The successful grid connection of a 54-MW/100-kWp wind-solar complementary power plant in NanâEUR(TM)ao, Guangdong Province, in 2004 was the first windâEUR"solar ...



### [Optimal Site Selection of Wind-Solar Complementary ...](#)

Nov 3, 2023 · Abstract: The wind-solar hybrid power generation project combined with electric vehicle charging stations can effectively reduce the impact on the power system caused by the ...



## Contact Us

---

For technical specifications, project proposals, or partnership inquiries, please visit:  
<https://www.bukhobuhle.co.za>

### Scan QR Code for More Information



<https://www.bukhobuhle.co.za>