

Is a large battery plus an inverter good





Overview

What wattage Inverter should I use?

Match the inverter's continuous wattage rating to the battery's discharge capacity. For a 12V 200Ah battery (2.4kWh), a 2000W inverter is ideal. Formula: $\text{Inverter Wattage} \leq (\text{Battery Voltage} \times \text{Ah Rating} \times 0.8)$. Factor in surge power needs but prioritize sustained loads.

Can a high power inverter be used on a car battery?

When using a high power inverter, it may be necessary to consider a battery with additional deep cycles to ensure that the car battery is not damaged by continuous discharge. For standard automotive batteries, it is recommended that inverter power not exceed 600 watts for safety and battery life.

How much inverter power can a car battery support?

There is a theoretical limit to the amount of inverter power that can be supported by an automotive battery. Theoretically, the maximum supported inverter power can be calculated by multiplying the battery capacity (Ah) by the battery voltage (V) multiplied by the discharge multiplier (C-rate).

Can a 12 volt car battery support a high power inverter?

Typically, a 12-volt car battery can support an inverter with a power range of about 150 watts to 1500 watts. Please note, however, that car batteries are not suitable for driving high power inverters for extended periods of time, which may cause damage to the battery.



Is a large battery plus an inverter good



[Is your inverter too big? Understanding the downsides of ...](#)

2 days ago · At first glance, a more powerful inverter seems like a good idea: more headroom, better handling of peak loads, and "it's always better to have more." But in practice, a ...

[Is your inverter too big? Understanding the ...](#)

2 days ago · At first glance, a more powerful inverter seems like a good idea: more headroom, better handling of peak loads, and "it's always better to ...



[Solar Inverters vs Batteries: Myths About ...](#)

Aug 13, 2025 · Confused about solar inverters vs batteries? Bust common backup power myths, see clear sizing steps, and get data-backed tips for ...

[How Big of an Inverter Can My Car Battery ...](#)

Mar 26, 2025 · When considering connecting an inverter to your car battery, the first question we need to clarify is: how much power can your car ...

...



What Happens When the Inverter Is Too Big for the Battery?

What are the effects of using an oversized inverter with a battery? When an inverter is too large for the battery it is connected to, several problems can arise: Reduced Efficiency: Oversized ...



Why Can an Inverter Be Too Big for a Battery?

When considering whether an inverter can be too big for a battery, it's essential to understand the implications of mismatched capacities. An oversized inverter may lead to inefficiencies, ...



Can a Battery Be Too Big for an Inverter?

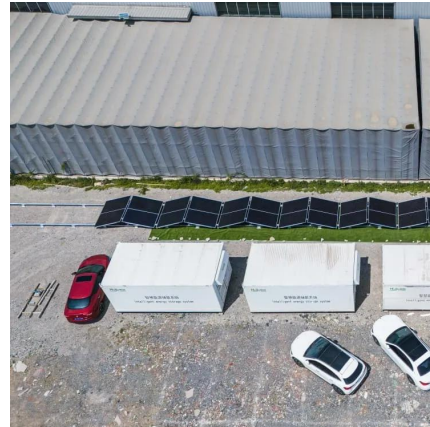
Dec 12, 2023 · Yes, a battery can be too big for an inverter, leading to inefficiencies and potential safety issues. Oversized batteries may not discharge correctly or could exceed the inverter's ...





[Can an Inverter Be Too Big for Your Battery System?](#)

How to Calculate the Right Inverter Size for Your Battery Match the inverter's continuous wattage rating to the battery's discharge capacity. For a 12V 200Ah battery (2.4kWh), a 2000W inverter ...

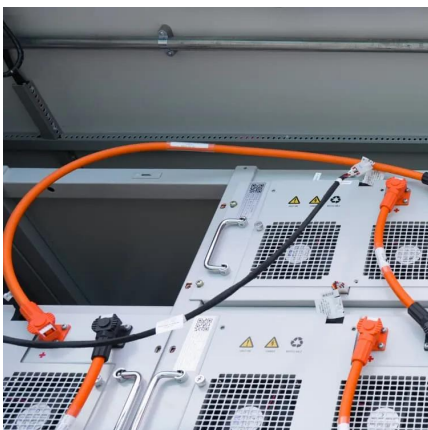
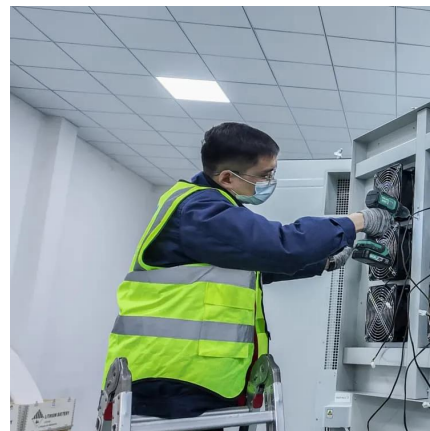


[Solar Inverters vs Batteries: Myths About Backup Power](#)

Aug 13, 2025 · Confused about solar inverters vs batteries? Bust common backup power myths, see clear sizing steps, and get data-backed tips for reliable home energy.

[Can an Inverter be Too Big for a Battery? Understanding the ...](#)

Understanding Inverter and Battery Compatibility Before we dive into the topic, let's quickly review the basics of inverter and battery compatibility. An inverter is an electronic device that converts ...



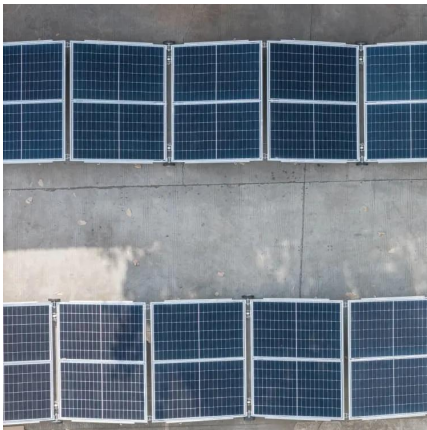
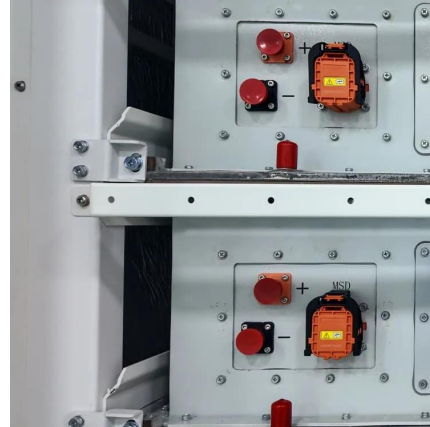
[What size inverter can you run off a car battery?](#)

Aug 11, 2025 · A typical 12-volt car battery can safely support an inverter ranging from about 150 watts up to 600 watts for regular use without harming the battery. While it is technically ...



[How Much Battery Capacity Is Good for Home Inverter](#)

Aug 6, 2025 · Choosing the right battery capacity for your home inverter isn't one-size-fits-all. It depends on your power needs, usage patterns, and budget. But getting it wrong means ...



[How Big of an Inverter Can My Car Battery Handle?](#)

Mar 26, 2025 · When considering connecting an inverter to your car battery, the first question we need to clarify is: how much power can your car battery actually support an inverter? Typically, ...

Contact Us

For technical specifications, project proposals, or partnership inquiries, please visit:
<https://www.bukhobuhle.co.za>

Scan QR Code for More Information



<https://www.bukhobuhle.co.za>