

Inverter voltage waveform





Overview

What is a single-phase inverter?

A single-phase inverter is a type of inverter that converts DC source voltage into single-phase AC output voltage at a desired voltage and frequency and it is used to generate AC Output waveform means converting DC Input to AC output through the process of switching.

Does a two-level inverter have a distorted output waveform?

In (Rana et al., 2019b), a two-level inverter's output voltage waveform is produced using a PWM technique. Because of the distorted output waveform, the THD is reduced (Teichmann and Bernet, 2005). The THD achieved is significantly lower than that of a two-level inverter since the output of a three-level inverter is sinusoidal.

What determines the shape of an inverter's output waveform?

1. Output Principles of Inverter Waveforms The shape of an inverter's output waveform is determined by various factors, including the circuit components' characteristics, parameters, and the working principle of the inverter.

What is a three-phase voltage source inverter (VSI) with SPWM?

A three-phase Voltage Source Inverter (VSI) with SPWM (Sinusoidal Pulse Width Modulation) is a type of inverter that converts DC voltage into three-phase AC voltage with sinusoidal waveforms. It works by varying the pulse width of a high-frequency carrier signal according to the instantaneous amplitude of a reference sinusoidal waveform.



Inverter voltage waveform



[An overall introduction of inverter waveform and the ...](#)

Dec 20, 2023 · This article will give you a detailed introduction and comparison of inverter waveform, including the principles of generating different waveforms, and comparison between ...

[Single Phase Inverter](#)

Jul 23, 2025 · Single Phase Inverter A single-phase inverter is a type of inverter that converts DC source voltage into single-phase AC output voltage at a desired voltage and frequency and it ...



[Inverter , Efficiency & Output Waveform](#)

Dec 25, 2023 · An inverter is a device that converts DC (direct current) power into AC (alternating current) power. Its output current's size and direction ...



[Three Phase Voltage Source Inverter with SPWM](#)

Oct 27, 2024 · Introduction A three-phase Voltage Source Inverter (VSI) with SPWM (Sinusoidal Pulse Width Modulation) is a type of inverter that converts DC voltage into three-phase AC ...



[Inverter , Efficiency & Output Waveform](#)

Jan 15, 2019 · A power inverter controls voltage and current between the source (PV array, wind turbine, or other types of DC source) and the electrical loads and converts variable DC output ...



[What is the output waveform of the inverter?](#)

Mar 25, 2022 · The input voltage of the inverter comes from the output of power sources such as battery packs or photovoltaic arrays and wind ...



[Inverter output and grid voltage waveforms](#)

The inverter output waveform was also changed since the load became inductive and a "step" was observed in the waveform. The complex power was measured using the current and ...





[Inverter Waveforms: Choosing The Right Output Waveform ...](#)

Feb 26, 2024 · PWM waveform inverters feature adjustable output voltage, meeting the requirements of different scenarios. However, their output quality still lags behind sinusoidal ...



[Lecture 19: Inverters, Part 3](#)

Feb 24, 2025 · We can realize more sophisticated multi-level inverters that can directly synthesize more intermediate levels in an output waveform, facilitating nice harmonic cancelled output ...

[What is the output waveform of the inverter?](#)

Mar 25, 2022 · The input voltage of the inverter comes from the output of power sources such as battery packs or photovoltaic arrays and wind turbines. Smaller systems output less power and ...



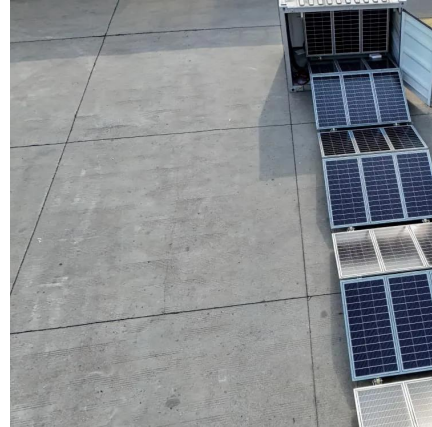
[An Overview of Inverter Waveforms and Comparative Analysis](#)

Dec 25, 2023 · An inverter is a device that converts DC (direct current) power into AC (alternating current) power. Its output current's size and direction are regulated by the input AC power's ...



Inverter output and grid voltage waveforms

The inverter output waveform was also changed since the load became inductive and a "step" was observed in the waveform. The complex power ...



Three Phase Voltage Source Inverter with ...

Oct 27, 2024 · Introduction A three-phase Voltage Source Inverter (VSI) with SPWM (Sinusoidal Pulse Width Modulation) is a type of inverter that ...

Two Level Inverter

In (Rana et al., 2019b), a two-level inverter's output voltage waveform is produced using a PWM technique. Because of the distorted output waveform, the THD is reduced (Teichmann and ...



Contact Us

For technical specifications, project proposals, or partnership inquiries, please visit:
<https://www.bukhobuhle.co.za>



Scan QR Code for More Information



<https://www.bukhobuhle.co.za>