

Inverter grid-connected frequency range





Overview

Do inverter-dominated grids affect frequency stability?

The frequency response is assessed following largest power infeed loss by plants technology (IBR or synchronous generator). The results demonstrate that inverter-dominated grid mainly impact frequency stability rather than voltage stability, with the disconnection of weaker PV plants during faults leading to underfrequency load shedding.

Can grid-connected PV inverters improve utility grid stability?

Grid-connected PV inverters have traditionally been thought as active power sources with an emphasis on maximizing power extraction from the PV modules. While maximizing power transfer remains a top priority, utility grid stability is now widely acknowledged to benefit from several auxiliary services that grid-connected PV inverters may offer.

What is a grid-connected inverter?

4. Grid-connected inverter control techniques Although the main function of the grid-connected inverter (GCI) in a PV system is to ensure an efficient DC-AC energy conversion, it must also allow other functions useful to limit the effects of the unpredictable and stochastic nature of the PV source.

Are grid-level coordinated inverter-based resources scalable and optimal frequency control?

This paper studies grid-level coordinated control of grid-forming (GFM) and grid-following (GFL) inverter-based resources (IBRs) for scalable and optimal frequency control.



Inverter grid-connected frequency range



[Inverter-based resources dominated grid: Voltage and frequency](#)

Jun 1, 2025 · The frequency response is assessed following largest power infeed loss by plants technology (IBR or synchronous generator). The results demonstrate that inverter-dominated ...

[Grid-Forming Inverters: A Comparative Study](#)

Mar 20, 2025 · This approach ensures stable operation in both islanded and grid-connected modes, providing essential grid support functions such as frequency and voltage regulation. Its ...



[Impact of Multiple Grid-Connected Solar PV Inverters on](#)

May 29, 2024 · This paper evaluates the behaviour of high-frequency harmonics in the 2-20 kHz range due to the parallel operation of multiple solar PV inverters connected to a low-voltage ...

[Grid-connected photovoltaic inverters: Grid codes, ...](#)

Jan 1, 2024 · With the development of modern and innovative inverter topologies, efficiency, size, weight, and reliability have all increased dramatically. This paper provides a thorough ...



[Impact of Multiple Grid-Connected Solar PV Inverters on ...](#)

May 29, 2024 · This paper evaluates the behaviour of high-frequency harmonics in the 2-20 kHz range due to the parallel operation of multiple solar PV inverters connected to a low-voltage ...



[Admittance Identification of Grid-Forming Inverters Using ...](#)

Apr 24, 2025 · All three approaches are shown to provide consistent results in identifying the dq admittance of grid-forming inverters (GFM) over a frequency range of 1 Hz to 100 Hz.



[Grid-Forming Inverters: A Comparative Study](#)

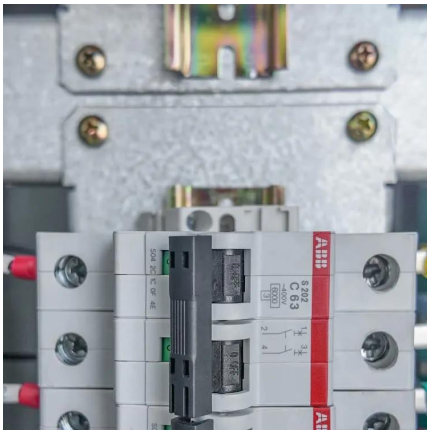
Mar 20, 2025 · This approach ensures stable operation in both islanded and grid-connected modes, providing essential grid support functions such as ...





[Distributed Coordination of Grid-Forming and Grid-Following Inverters](#)

May 13, 2025 · Abstract The large-scale integration of inverter-interfaced renewable energy sources presents significant challenges to maintaining power balance and nominal frequency ...



[Impact of Multiple Grid-Connected Solar PV ...](#)

May 29, 2024 · This paper evaluates the behaviour of high-frequency harmonics in the 2-20 kHz range due to the parallel operation of multiple ...

[A Tight Grid-Forming Control Framework for Grid-connected Inverters](#)

The high penetration of renewable energy sources in future power grids presents stability challenges for grid-connected inverters, particularly during large frequency drops under a wide ...



[A Tight Grid-Forming Control Framework for Grid-connected Inverters](#)

3 days ago · The high penetration of renewable energy sources in future power grids presents stability challenges for grid-connected inverters, particularly during large frequency drops ...



[A Frequency Adaptive Control Strategy for Grid-Connected Inverters](#)

Nov 19, 2024 · For a grid-connected inverter (GCI) without ac voltage sensors connected to the weak grid, the occurrence of frequency variation diminishes the accuracy of the estimated grid ...



Contact Us

For technical specifications, project proposals, or partnership inquiries, please visit:
<https://www.bukhobuhle.co.za>

Scan QR Code for More Information



<https://www.bukhobuhle.co.za>