

# **Inverter continuous output power**





## Overview

---

What is continuous output power?

Continuous output power is the long term normal operation. It offers continuous power for your load normal working. If your electric devices draw a combined total of 600 watts, then you need to buy an inverter that has a continuous output rating of 600 watts.

What is wattage in inverter?

Wattage is the output power of an inverter expressed in units of Watts (W). Wattage can be divided into two categories: continuous wattage and peak or surge wattage. Continuous wattage is power that can be used stably for a long time, while peak or surge wattages are additional power that can be used in a short time.

When can an inverter start?

Because these inductive loads require a large current to start at the moment of startup, the appliance can start normally only when the inverter peak power is greater than the starting power of the appliance. Under normal circumstances, the peak power is equal to 2 times the rated power. 2. Different types of load.

What is the difference between peak output power and continuous output power?

Peak output power is the wattage that an inverter can supply for a very short period of time when start. Continuous output power is the long term normal operation. It offers continuous power for your load normal working.



## Inverter continuous output power

---



### [How To Read And Interpret An Inverter ...](#)

4 days ago · Wattage is the output power of an inverter expressed in units of Watts (W). Wattage can be divided into two categories: continuous ...

### [What is the difference between continuous power and peak power?](#)

Continuous output power is the long term normal operation. It offers continuous power for your load normal working. If your electric devices draw a combined total of 600 watts, then you ...

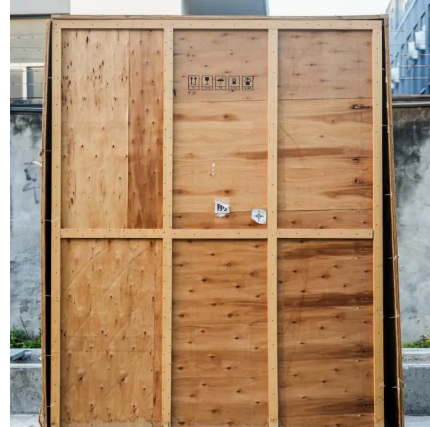


### **What is the difference between the continuous output power of the power**

The continuous power and peak power differ depending on the meaning of their expression. Continuous load current value  $\times$  220 (AC voltage) Starting Load  $2 \times$  Power Value In general, ...

### [Inverter Specifications and Data Sheet](#)

2 days ago · The article provides an overview of inverter functions, key specifications, and common features found in inverter systems, along with an example of power calculations and ...



### [Useful guide to inverter peak power and how to choose an inverter](#)

Dec 17, 2023 · Power inverters come in many specifications, which usually include rated power and inverter peak power. Rated power is continuous output power, which refers to the power ...



### [Inverter sizing and selection](#)

Jan 19, 2021 · Step 1: Determine the inverter continuous output rating All inverters have a continuous output (duty) rating that can be found in volt ...



### [Inverter sizing and selection](#)

Jan 19, 2021 · Step 1: Determine the inverter continuous output rating All inverters have a continuous output (duty) rating that can be found in volt-amperes (VA) or watts (W) on their ...







### [What is the difference between continuous ...](#)

Continuous output power is the long term normal operation. It offers continuous power for your load normal working. If your electric devices ...



### **Should I choose a high or low inverter? Understanding "continuous power"**

Choose the one you need When it is time to determine which inverter would be best for you, this will depend on your needs and usage. A higher rated inverter will generally have a higher ...



### [Inverter Peak Power vs Rated Power: What it is and Why It...](#)

Apr 21, 2025 · Understand the key differences between inverter peak power and rated power. Discover the importance of both, how they affect your appliances.



### [How To Read And Interpret An Inverter Specification](#)

4 days ago · Wattage is the output power of an inverter expressed in units of Watts (W). Wattage can be divided into two categories: continuous wattage and peak or surge wattage.



### [What does the peak power of the power inverter mean and ...](#)

Dec 11, 2020 · Rated power is also called continuous output power, which is a long-term, stable power that provides continuous power for your load to work normally. If the total energy ...



### [What is the Peak Output Power of a Power Inverter?](#)

May 25, 2022 · What is continuous output power and peak output power? Some electrical appliances or equipment using motors, such as refrigerators, washing machines, electric drills, ...

### [Useful guide to inverter peak power and how ...](#)

Dec 17, 2023 · Power inverters come in many specifications, which usually include rated power and inverter peak power. Rated power is continuous ...



### [Inverter Peak Power vs Rated Power: What it ...](#)

Apr 21, 2025 · Understand the key differences between inverter peak power and rated power. Discover the importance of both, how they affect your ...



## Contact Us

---

For technical specifications, project proposals, or partnership inquiries, please visit:  
<https://www.bukhobuhle.co.za>

### Scan QR Code for More Information



<https://www.bukhobuhle.co.za>