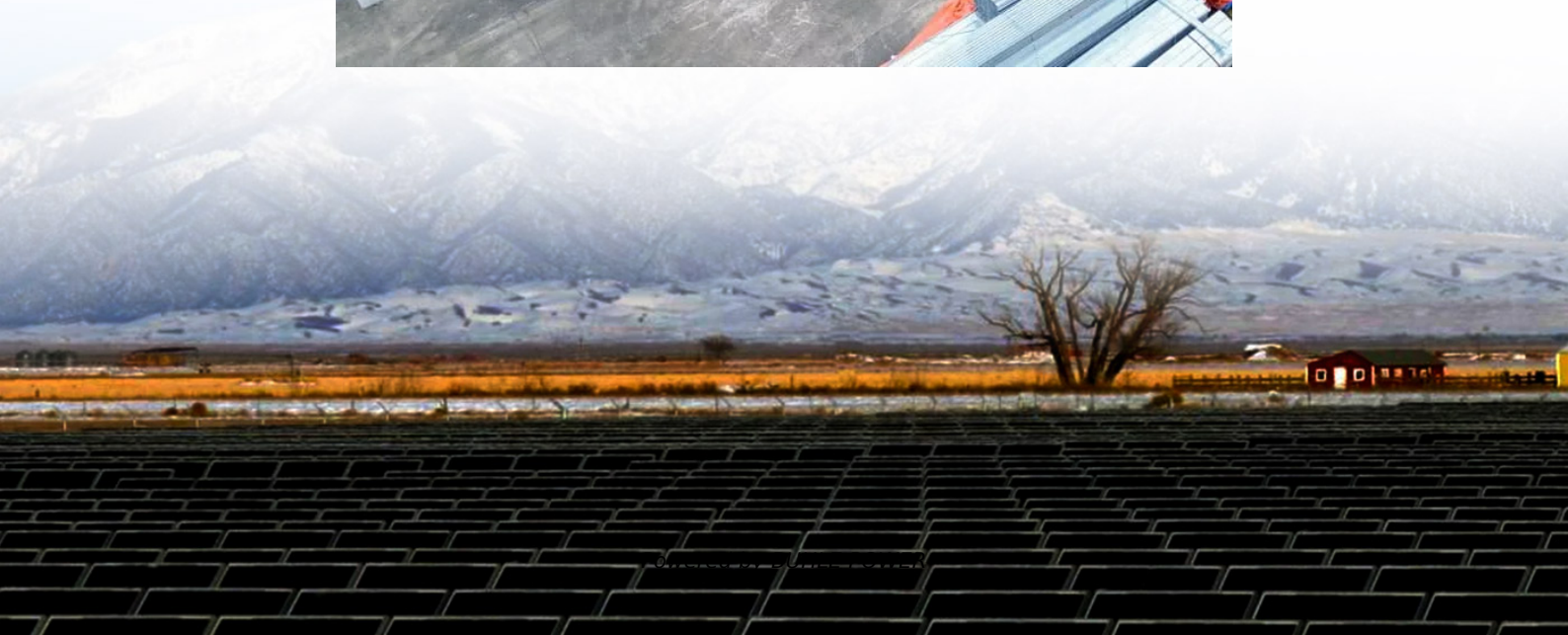


# **How to introduce outdoor ground wire into base station**





## Overview

---

What is a grounding rod?

**Grounding Rods:** These are typically made of copper or copper-clad steel and are driven into the ground to provide a low-resistance path to earth. A common practice is to use multiple ground rods placed several feet apart.

**Grounding Wire:** This wire connects your station equipment to the grounding rods.

How do I design a grounding system for a high-powered station?

When designing a grounding system for a high-powered station, there are several technical factors to consider: **Grounding Resistance:** The resistance between your grounding system and the earth should be as low as possible, typically under 10 ohms, but ideally below 5 ohms for optimal safety.

How do you ground an antenna tower?

Here's a comprehensive guide on grounding an antenna tower, including the materials needed and the steps to follow. **Grounding rods:** Copper or copper-clad steel, typically 8-10 feet long. **Grounding wire:** Solid copper wire, at least #6 AWG (or thicker, depending on local regulations).

How do you install a grounding system?

Connect the grounding wire directly to the tower base or the anchor bolts using a clamp. This step ensures that the tower itself is part of the grounding system and offers a direct path for electrical discharge. After completing the installation, test the grounding system to verify its effectiveness.



## How to introduce outdoor ground wire into base station

---



### [Antenna Tower Grounding: A Step-by-Step Guide](#)

Step 2: Drive Ground Rods into the Soil Position the first rod approximately 2 feet from the tower base. Use a sledgehammer or ground rod driver to drive the rod into the ground, leaving about ...

### Station Grounding

The third (green, ground) wire should be connected to the ground buss in the building's electrical service panel, which should be grounded directly to earth via an 8' ground rod driven into earth ...

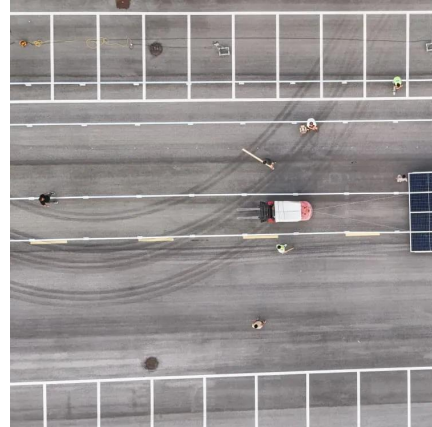


### [What to Do if There Is No Ground Wire](#)

When it comes to electrical systems, safety should always be a top priority. One crucial element in ensuring the safety of your electrical setup is the ...

### [How To Bury Electrical Wire In Ground](#)

May 3, 2023 · In this article, we will dive into the best practices for safely and effectively burying electrical wire in the ground. The first step in burying ...



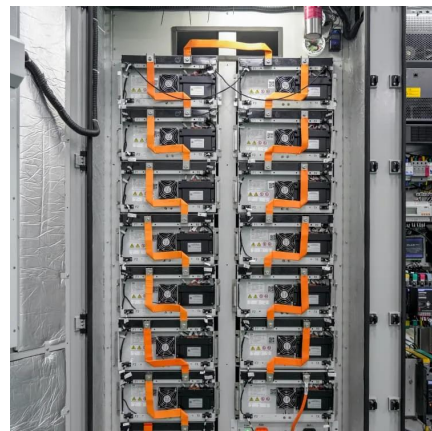
### [The Essential Guide to Grounding Systems for High-Powered ...](#)

Jan 13, 2025 · Keep Grounding Wire Short and Direct: The shorter and more direct the grounding wire, the better. Avoid sharp bends and long runs, as these can introduce unnecessary ...



### [Complete Guide to 5G Base Station ...](#)

Nov 17, 2024 · Explore how 5G base stations are built--from site planning and cabinet installation to power systems and cooling solutions. Learn the ...



### [How to Ground a CB Base Station Antenna](#)

Nov 25, 2025 · Base station antennas are fixed installations for receiving radio signals, and are usually on tall structures placed at a great height over the ground. This makes them easy ...





### [Can I connect my station ground to my ...](#)

Feb 25, 2022 · It would be about a 50ft wire run to the house's grounding rod from my shack. If I do need a second ground rod for my station, does it ...



### [Grounding and Bonding For Home Stations](#)

Mar 5, 2025 · Grounding for ac safety has several names "Equipment ground", "third-wire ground", "green-wire ground" Keep ground connections low-resistance Purpose is two-fold Provides a ...

### [I just hooked up my antenna, but can't figure out where to ...](#)

May 25, 2021 · Connecting the ground wire is super easy. Unscrew one of the green lugs just enough to slide the ground wire into the hole. Then tighten up the screw enough to hold the ...



### [Antenna Tower Grounding: A Step-by-Step ...](#)

Step 2: Drive Ground Rods into the Soil Position the first rod approximately 2 feet from the tower base. Use a sledgehammer or ground rod driver to ...



## [Best Practices for Outdoor Grounding & Bonding](#)

...

Mar 5, 2025 · Outdoor Connection Longevity  
Connector Selection Selecting a connector that is design to be used for the application. Proper wire size / wire range & designed to connect to ...



## [Electrical Conduit 101: NEC Code Compliance ...](#)

Nov 4, 2024 · In this post, we will explore the latest NEC code requirements for EV charging stations and make clear electrical conduit systems, ...

## [I just hooked up my antenna, but can't figure out where to ...](#)

Why Grounding Is Important Where People Get Tripped Up Why Don'T You Have to Ground The Antenna? Why Can'T You Just Use Grounding Wire as Your Signal wire? Get The Grounding Supplies You Need at Solid Signal See, it's step 1 that seems to get some people flustered. See, most antennas don't have a place to connect that ground wire. And that seems to really confuse some of those hard-core techies who know how important grounding is. Here's the magic bit that makes it all work: This is called a ground block. You connect your antenna cable to it, connect a See more on blog.solid signal It Still Works



## **How to Ground a CB Base Station Antenna - It Still Works**

Nov 25, 2025 · Base station antennas are fixed installations for receiving radio signals, and are usually on tall structures placed at a great height over the ground. This makes them easy ...



### [Gateway and Base Station Installation Guide](#)

Aug 11, 2018 · Installation Planning IMPORTANT: This document provides guidelines for the proper placement and installation of Gateways, Base Stations, and the antennas. Failure to ...

### [Grounding Essentials: Where to Connect Your Ground Wire](#)

Jun 8, 2025 · The Importance of Ground Wires Before diving into where to connect your ground wire, it's essential to understand what a ground wire is and why it's critical for your electrical ...



### [Proper Bonding Locations for Grounding Antenna](#)

Please consult the electrical codes in your jurisdiction. There are 5 general locations where you can bond to ground an antenna mast, coax cable, or other conductor required to be bonded to ...

### [Tech corner Your station ground](#)

Jan 15, 2025 · The ground below As directly below your antenna mast as possible, you need to drive an eight-foot ground rod into the dirt, and attach your ground wire to it. You might find ...



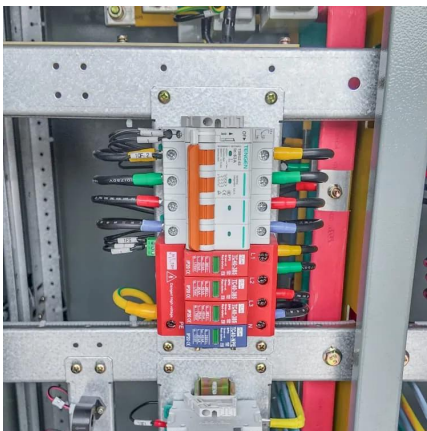
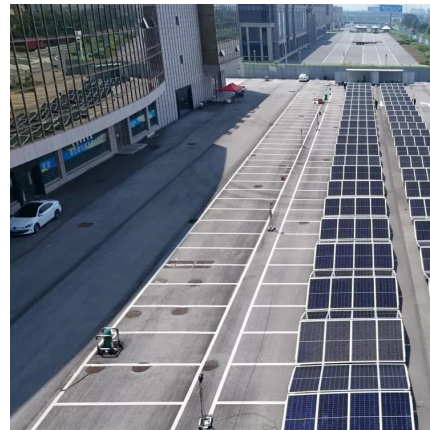


### [How to Ground a CB Base Station Antenna](#)

Apr 12, 2017 · Hammer the ground rod into the ground, until about six inches are left extending up out of the ground. Wrap one end of the copper wire around the base of the antenna mast. ...

### [Can I connect my station ground to my house's ground rod?](#)

Feb 25, 2022 · It would be about a 50ft wire run to the house's grounding rod from my shack. If I do need a second ground rod for my station, does it need to be bonded (connected via 10 ...



### [The Essential Guide to Grounding Systems for ...](#)

Jan 13, 2025 · Keep Grounding Wire Short and Direct: The shorter and more direct the grounding wire, the better. Avoid sharp bends and long runs, as ...

## Contact Us

---

For technical specifications, project proposals, or partnership inquiries, please visit:  
<https://www.bukhobuhle.co.za>



## Scan QR Code for More Information



<https://www.bukhobuhle.co.za>