

How to connect the battery to a simple base station





Overview

Do I need to replace my base station's batteries?

If you're not certain which system you have, see the [Which Version of the SimpliSafe® System Do I Have](#) article. You will likely never need to replace your Base Station's batteries as they are rechargeable and meant to last. The Base Station takes four (4) 1.2V, 1300mAh nickel-metal hydride (NiMH) rechargeable batteries.

How many batteries does the base station take?

The Base Station takes four (4) 1.2V, 1300mAh nickel-metal hydride (NiMH) rechargeable batteries. Regular alkaline batteries should never be inserted into the Base Station, as they may damage the device. Once you have acquired the necessary NiMH rechargeable batteries, you can follow the steps below to replace them:.

How do I set up a base station?

Set up the base station using either the tripod or T-bar mounting method. You must use an external radio antenna kit for the internal 450 MHz or 900 MHz radio. To avoid interference between the 900 MHz radio and GPRS transmissions, do not mount the external radio antenna within 1 m (3.3 ft) of the GSM antenna.

Can you put alkaline batteries in a base station?

NEVER insert regular alkaline batteries into the Base Station as they may damage the device. Plug your Base Station back into power. Was this helpful?

Does your Keypad look like the one pictured to the left?



How to connect the battery to a simple base station

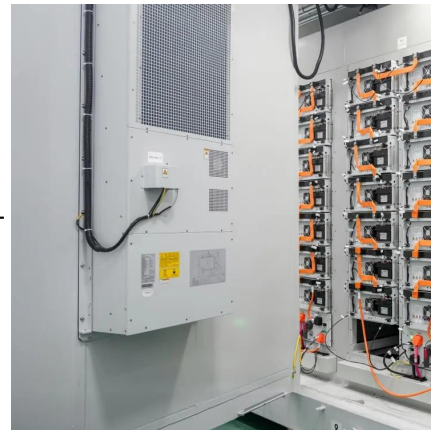


[How To Replace Base Station Batteries . SimpliSafe Support ...](#)

You will likely never need to replace your Base Station's batteries as they are rechargeable and meant to last. The Base Station takes four (4) 1.2V, 1300mAh nickel-metal hydride (NiMH) ...

[Telecom Base Station Backup Power Solution: Design Guide ...](#)

Jun 5, 2025 · Discover the 48V 100Ah LiFePO4 battery pack for telecom base stations: safe, long-lasting, and eco-friendly. Optimize reliability with our design guide.



[How to Connect a Base Station Lithium Battery to an Inverter ...](#)

Connecting lithium batteries to inverters in base stations is critical for industries like telecommunications, renewable energy integration, and emergency power systems. With the ...



[How to connect solar photovoltaic base station . NenPower](#)

May 22, 2024 · The base station includes additional components such as inverters, batteries, and management systems that optimize energy use. It is essential to consider these components ...

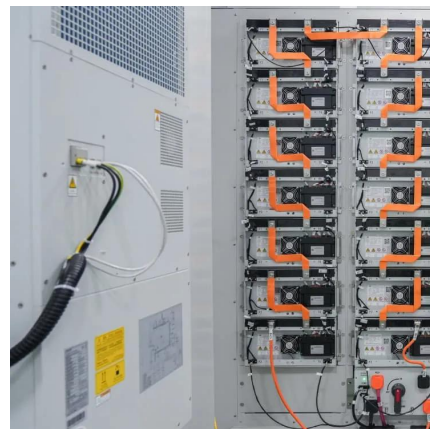


[How To Replace Base Station Batteries](#)

You will likely never need to replace your Base Station's batteries as they are rechargeable and meant to last. The Base Station takes four (4) 1.2V, ...

[Base Station \(Gen 3\) Overview and Installation Guide](#)

OverviewThe Base Station is the brains of your system. It sends alarm signals to the monitoring center* with built-in cellular and Wi-Fi connections, a battery backup that lasts up to 24 hours, ...



[Pairing a Base Station: A Comprehensive Guide to Seamless ...](#)

Apr 2, 2025 · In today's interconnected world, base stations play a vital role in providing reliable and efficient communication networks. Whether you're setting up a home security system, a ...



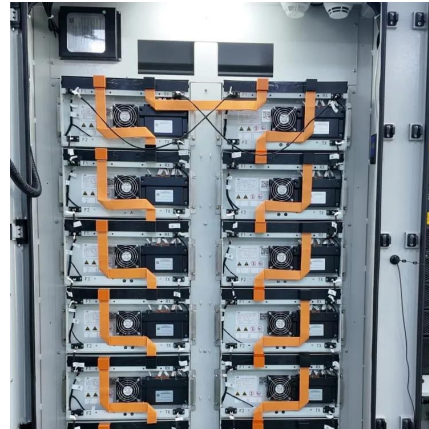
[How to connect solar photovoltaic base ...](#)

May 22, 2024 · The base station includes additional components such as inverters, batteries, and management systems that optimize energy use. ...



[Common ways to set up a base station](#)

Dec 1, 2025 · Each day, mount the GNSS antenna on the GNSS end of the T-Bar and the radio antenna on the radio end of the T-Bar. Connect the antennas to the receiver using the ...



[Telecom Base Station Backup Power Solution: ...](#)

Jun 5, 2025 · Discover the 48V 100Ah LiFePO4 battery pack for telecom base stations: safe, long-lasting, and eco-friendly. Optimize reliability with ...



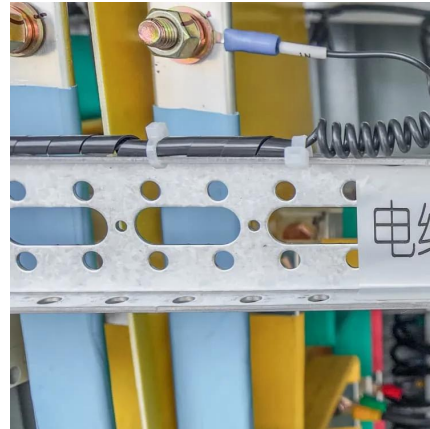
[How to connect base station batteries in series with ...](#)

To connect batteries in a series, use a jumper wire to connect the first battery's negative terminal to the second battery's positive terminal. This leaves you a positive terminal on the first battery ...



[Installation and hardware , Base Help Center](#)

What does a typical Base system installation look like? How does the Base system interact with the generator interlock on the main panel? How do I connect my battery to my home WiFi ...



[HOW TO INSERT BATTERY INTO BASE STATION?](#)

How much channel steel is used for the battery cabinet base A battery enclosure is a housing, cabinet, or box. It is specifically designed to store or isolate the battery and all its accessories ...

Contact Us

For technical specifications, project proposals, or partnership inquiries, please visit:
<https://www.bukhobuhle.co.za>

Scan QR Code for More Information



<https://www.bukhobuhle.co.za>