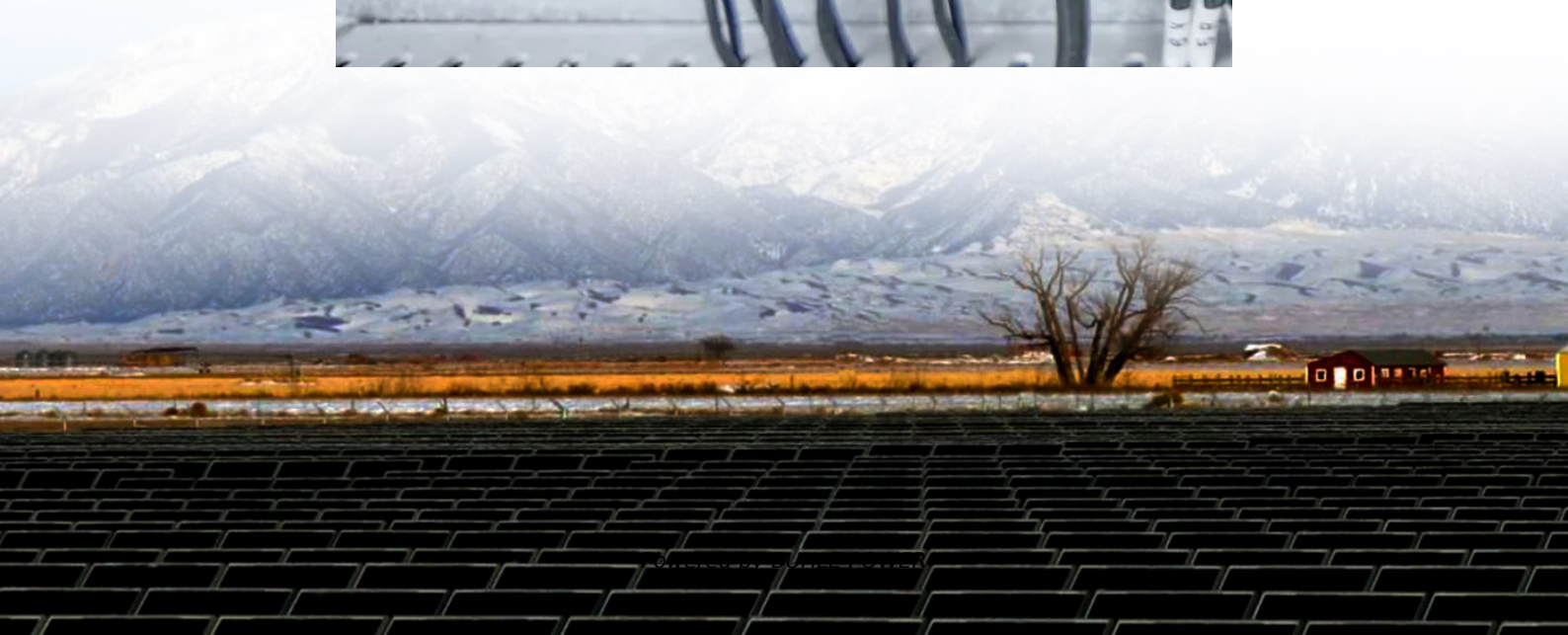
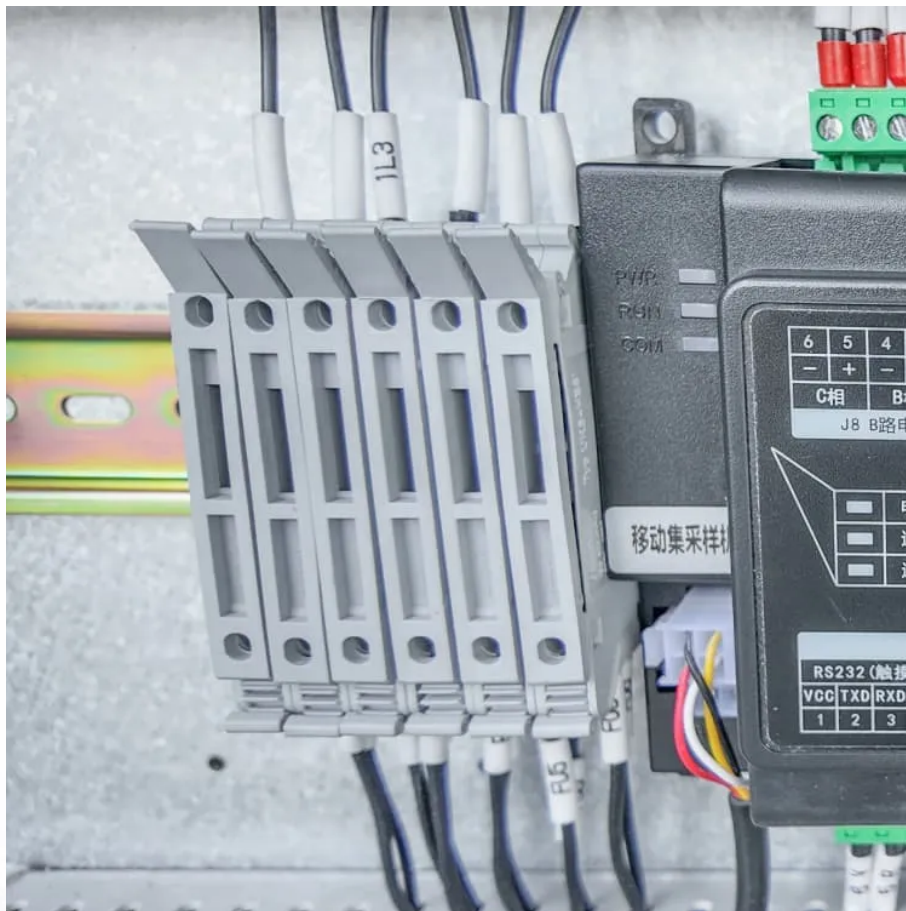


How to connect solar controller to power storage container





Overview

Whether you have a PWM-controller or an MPPT-regulator, the procedure of hooking it up with the battery and panels remains the same. Normally there are three wiring sections on a charge controller: one.

How do you connect a solar panel system to a battery?

To connect your solar panel system, first, disconnect all components. Connect the charge controller to the battery, then attach the solar panels to the charge controller. Finally, connect the inverter to the battery. Always turn on the charge controller before the inverter and check that all indicators are functioning properly.

Can I connect a solar panel to a charge controller?

If you connect the solar panel to a charge controller first, it may not initialize correctly. After you've connected the charge controller to the battery, it is now safe to connect it to the panels. Out of the junction box of a panel come two cables, a positive and a negative.

How do you connect a charge controller to a solar array?

Screw the wires tightly into the charge controller Turn the charge controller on: it should be able to measure the charge of the battery. In the user manual of a charge controller, there should be a wiring diagram, which you can consult if in doubt. It's advised to wire the controller to the battery first before connecting it to a solar array.

Can a solar panel connect to a battery?

With careful attention to safety and proper maintenance, your solar panel to battery system will provide reliable, clean energy for decades to come. What happens if I connect solar panels to the charge controller before connecting the battery?

How do I know what wire size to use for my solar panel to battery connections?



How to connect solar controller to power storage container



[How to connect solar panels to charge ...](#)

Nov 18, 2024 · If your solar system has a battery, add a charge controller! It will prolong the lifespan of your energy storage and make your system ...

[Connect Panels to a Battery Bank. Charge Controller & Inverter](#)

Here's how to connect solar panels to a battery bank, charge controller, and inverter when building a DIY renewable energy system.



[How to connect the solar panel control box . NenPower](#)

Mar 15, 2024 · The solar panel control box functions as the central hub for managing and distributing electrical energy produced by solar panels. It encompasses various components ...



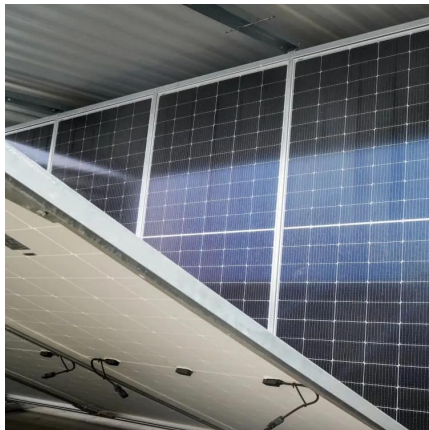
[How to connect the solar panel control box](#)

Mar 15, 2024 · The solar panel control box functions as the central hub for managing and distributing electrical energy produced by solar panels. It ...



[Setting Up Solar Charge Controller to the Solar Panel: ...](#)

Jul 12, 2024 · This typically involves connecting the positive and negative wires from the solar panel to the corresponding terminals on the charge controller. Most solar charge controllers ...



[Setting Up Solar Charge Controller to the ...](#)

Jul 12, 2024 · This typically involves connecting the positive and negative wires from the solar panel to the corresponding terminals on the charge ...



[Solar PV Energy storage box installation and ...](#)

May 20, 2025 · In off-grid business use, a Solar PV Energy Storage box represents an autonomous power solution that has photovoltaic (PV) ...





[How to connect container solar panel batteries](#)

The size of a charge controller is measured in amps. To find the right controller for your solar setup, divide the total power of your solar panels by your battery's voltage. For example, if ...



[How to connect solar panels to battery bank, charge controller...](#)

Aug 26, 2024 · How to connect solar panels to battery bank, charge controller, and inverter wiring diagrams: Setting up a solar power system requires proper wiring to ensure efficiency and safety.

[How to Connect Solar Panels to Battery: Complete 2025...](#)

Jul 13, 2025 · Learn how to safely connect solar panels to batteries with our expert step-by-step guide. Includes wiring diagrams, safety tips, and troubleshooting advice.



[Solar PV Energy storage box installation and wiring method](#)

May 20, 2025 · In off-grid business use, a Solar PV Energy Storage box represents an autonomous power solution that has photovoltaic (PV) arrays, storage batteries, inverters, and ...



[How to Connect Solar Panels to Battery: ...](#)

Jul 13, 2025 · Learn how to safely connect solar panels to batteries with our expert step-by-step guide. Includes wiring diagrams, safety tips, and ...



[Is Your Controller Wired for Optimal Solar Energy Storage?](#)

Oct 22, 2025 · The hybrid charge controller is the operational core of a modern solar energy storage system. While connecting panels to a controller and then to a battery might seem ...

[How to connect solar panels to charge controller in 3 steps](#)

Nov 18, 2024 · If your solar system has a battery, add a charge controller! It will prolong the lifespan of your energy storage and make your system safer and easier to use. In this article, ...



[How to Connect Solar Panel Charge Controller Battery and...](#)

Nov 21, 2024 · Unlock the power of solar energy with our comprehensive guide on connecting your solar panel system! Learn how to effectively wire solar panels, charge controllers, ...



Contact Us

For technical specifications, project proposals, or partnership inquiries, please visit:
<https://www.bukhobuhle.co.za>

Scan QR Code for More Information



<https://www.bukhobuhle.co.za>