

How much power can a 48v10ah inverter carry





Overview

How much inverter power can a car battery support?

There is a theoretical limit to the amount of inverter power that can be supported by an automotive battery. Theoretically, the maximum supported inverter power can be calculated by multiplying the battery capacity (Ah) by the battery voltage (V) multiplied by the discharge multiplier (C-rate).

How much inverter power should a 100Ah battery use?

However, due to inverter efficiency and actual power usage, it is not recommended to set the load to 100% of the actual battery capacity. It is generally recommended to set it to about 80%, which is more prudent. Taking a 100Ah battery as an example, the recommended maximum inverter power is 960W ($1200W \times 0.8$).

Which appliances can run on a 48v battery?

All appliances with a voltage rating of less than 48V can run on such devices. Usually, a 48V battery is quite high voltage and supports almost all the devices in your home and powerhouses. Let's discuss more. The running time of the 48V battery depends on several factors. These factors can range from the battery capacity to the power.

How long does a 48V 20Ah battery last?

A 48V 20Ah battery has 960Wh (48×20). If your device uses 100W, then $960 \div 100 =$ about 9.6 hours. Of course, real-world usage varies because of inverter losses, temperature, and other factors. Part 6. What affects the life of a 48V Li-ion battery pack?

Several factors will impact how long your battery survives:



How much power can a 48v10ah inverter carry



[Calculate Battery Size for Inverter Calculator](#)

Mar 14, 2025 · The Calculate Battery Size for Inverter Calculator helps you determine the optimal battery capacity needed to support your inverter ...

[Solar Battery Size Guide: kWh, Inverter & Runtime](#)

Sep 10, 2025 · Size your solar battery using load profile, critical loads, efficiency and DoD. Calculator matches kWh, inverter and runtime for code-compliant installs.



[How to Choose the Right Ah for 48V Li-ion ...](#)

Apr 27, 2025 · Customizations: Batteries tailored for specific applications, such as solar energy systems or e-bikes, can increase the price. On ...

[Amp Hour Calculator , Battery Capacity ...](#)

Use our Amp Hour Calculator and Battery Capacity Calculator to convert Ah Wh, size LiFePO4 and lead-acid battery banks, and estimate runtime ...



[What size inverter can a 48V 100Ah LiFePO4 battery support?](#)

1 day ago · To determine the appropriate size inverter for a 48V 100Ah LiFePO4 battery, we need to consider the battery's capacity and the power demands of the devices you intend to run.

...



[48V Battery: How Long Can You Run It?](#)

Feb 21, 2025 · How long does a 48V battery last? No one can answer until you know the power of the devices being run. But before we have the direct answers, it is better to know the battery ...



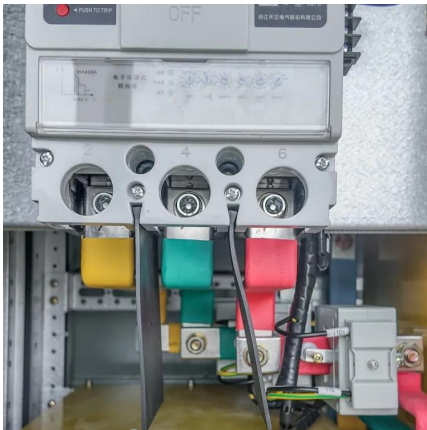
[48V Inverter: The Ultimate Guide to Efficient and Scalable Power](#)

May 19, 2025 · Unlock efficient power solutions with a 48V inverter--perfect for solar, off-grid, and backup systems. Learn how to choose the best one for your needs now!



[Inverter Usage Calculator](#)

Jan 10, 2024 · Enter the battery capacity, inverter efficiency, and load power into the calculator to determine the usage time of an inverter. This calculator helps to estimate how long an inverter ...



[How to Choose the Right Ah for 48V Li-ion Battery Pack?](#)

Apr 27, 2025 · Customizations: Batteries tailored for specific applications, such as solar energy systems or e-bikes, can increase the price. On average, a standard 48V Li-ion battery pack ...

[How Big of an Inverter Can My Car Battery ...](#)

Mar 26, 2025 · Calculating inverter demand sizing There is a theoretical limit to the amount of inverter power that can be supported by an automotive ...



[How Do You Calculate the Appropriate Inverter Size for a ...](#)

Oct 28, 2024 · To calculate the appropriate inverter size for a 48V battery system, you need to determine the total wattage of the devices you plan to power. The formula is: Inverter Size ...



[48V Battery: How Long Can You Run It?](#)

Feb 21, 2025 · How long does a 48V battery last? No one can answer until you know the power of the devices being run. But before we have the ...



[Calculate Battery Size for Inverter Calculator](#)

Mar 14, 2025 · The Calculate Battery Size for Inverter Calculator helps you determine the optimal battery capacity needed to support your inverter system. By inputting critical parameters such ...

[Solar Battery Size Guide: kWh, Inverter](#)

Sep 10, 2025 · Size your solar battery using load profile, critical loads, efficiency and DoD. Calculator matches kWh, inverter and runtime for ...



[Amp Hour Calculator , Battery Capacity Calculator, AhWh ...](#)

Use our Amp Hour Calculator and Battery Capacity Calculator to convert Ah Wh, size LiFePO4 and lead-acid battery banks, and estimate runtime for 12V, 24V, 36V, and 48V systems. Enter ...



[Inverter Usage Calculator](#)

Jan 10, 2024 · Enter the battery capacity, inverter efficiency, and load power into the calculator to determine the usage time of an inverter. This ...



[What size inverter can a 48V 100Ah LiFePO4 ...](#)

1 day ago · To determine the appropriate size inverter for a 48V 100Ah LiFePO4 battery, we need to consider the battery's capacity and the ...

[How Big of an Inverter Can My Car Battery Handle?](#)

Mar 26, 2025 · Calculating inverter demand sizing There is a theoretical limit to the amount of inverter power that can be supported by an automotive battery. Theoretically, the maximum ...



Contact Us

For technical specifications, project proposals, or partnership inquiries, please visit:
<https://www.bukhobuhle.co.za>



Scan QR Code for More Information



<https://www.bukhobuhle.co.za>