

How many watts does a 48v inverter require





Overview

What wattage should a battery inverter be?

The inverter you buy should have the correct wattage rating for your battery. Most Consumer Reports recommends that a good inverter has a wattage rating of at least 468 watts. For example, if you are using an ebike battery with a 36-volt system, then you would need an inverter with a wattage of 500 watts or greater.

How to choose a 48V low frequency inverter?

Efficiency is a key factor when choosing a 48V low frequency inverter. Look for models with high efficiency ratings, as they will ensure optimal power conversion and minimize energy losses. This will ultimately result in lower operating costs and improved overall performance.

Do I need an inverter size chart?

The need for an inverter size chart first became apparent when researching our DIY solar generator build. Solar generators range in size from small generators for short camping trips to large off-grid power systems for a boat or house. Consequently, inverter sizes vary greatly.

How many Watts Does a 432 x 1.4 inverter use?

Now add up all the different wattages. $150 + 7 + 75 + 150 + 50 = 432\text{W}$ $432 \times 1.4 = 604,8$ Result: To power the above appliances simultaneously, you'll need a minimum inverter size of 600 watts. Remember, the x1.4 adds extra security if any of your appliances are inductive loads.



How many watts does a 48v inverter require

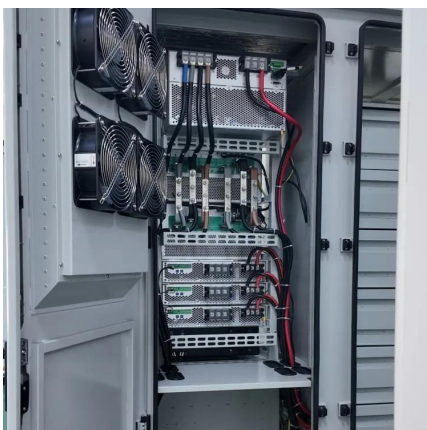


[How to Calculate the Maximum Output Power of a Power Inverter](#)

With home systems from batteries from 12V to 48V, the power inverter will always step up the voltage; thus, the current will be lower at the output of the inverter. With step up inverters, the ...

[How Do You Calculate the Appropriate Inverter Size for a 48V ...](#)

Oct 28, 2024 · To calculate the appropriate inverter size for a 48V battery system, you need to determine the total wattage of the devices you plan to power. The formula is: Inverter Size ...



Inverter Calculator

Change values in the boxes with arrows and the calculator will adjust to show you other system specifications: Inverter Input Inverter Power Rating Inverter Output 12VDC 24VDC 48VDC ...

[48V Inverter: The Ultimate Guide to Efficient and Scalable ...](#)

May 19, 2025 · Unlock efficient power solutions with a 48V inverter--perfect for solar, off-grid, and backup systems. Learn how to choose the best one for your needs now!



[48V Inverter vs. 12V Inverter: Core Differences ...](#)

Mar 19, 2025 · If you're planning a power system, whether you choose a 48V or 12V inverter has a direct impact on efficiency, cost, and long-term ...

[How much solar power does a 48v inverter use. NenPower](#)

Jul 29, 2024 · The usual wattage required for a 48V inverter can fluctuate based on the type of devices it powers and their cumulative rating. Commonly, a 48V inverter may utilize between ...



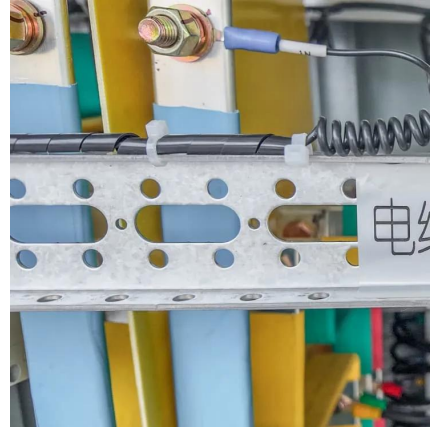
[How much solar power does a 48v inverter ...](#)

Jul 29, 2024 · The usual wattage required for a 48V inverter can fluctuate based on the type of devices it powers and their cumulative rating. ...



[The Only Inverter Size Chart You'll Ever Need](#)

Sep 25, 2023 · We have created a comprehensive inverter size chart to help you select the correct inverter to power your appliances.

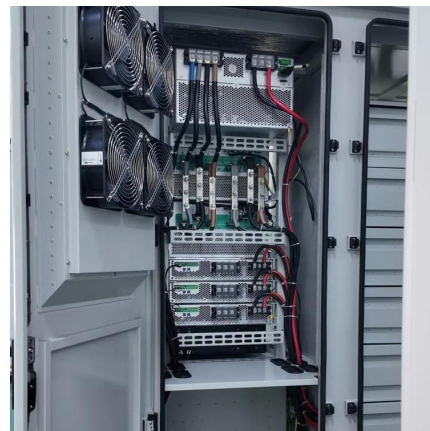


[What Size Inverter To Charge E-Bike Battery? \[With Size Chart\]](#)

For example, if you have a 48V and 10.4A battery, you need an inverter $48 \times 10.4 = 500$ Watts. Remember that, If you grab a bigger inverter, it won't cause a problem rather than a slight ...

[What Size Inverter To Charge E-Bike Battery?](#)

For example, if you have a 48V and 10.4A battery, you need an inverter $48 \times 10.4 = 500$ Watts. Remember that, If you grab a bigger inverter, it won't ...



[The Only Inverter Size Chart You'll Ever Need](#)

How to Determine What Size Inverter I Need? What Are The Two Types of Power loads? Inverter Size Chart What Will A 300W Inverter Run? What Will A 500W Inverter Run? What Will A 700W Inverter Run? What Will A 1000W Inverter Run? What Will A 1500W Inverter Run? What Will A 2000W Inverter Run? What Will A 3000W Inverter Run? Before we go any further, we highly recommend that you choose a pure sine wave inverter. This type of inverter delivers high-quality electricity, similar to your utility



company. This way, none of your appliances run the risk of being damaged. Now, when it comes to sizing your inverter, you always need to check your appliances' wattage and ensure t See more on climatebiz 12 Volts Plus

Inverter Calculator - 12 Volts Plus

Change values in the boxes with arrows and the calculator will adjust to show you other system specifications: Inverter Input Inverter Power Rating ...

[Maximizing Efficiency with 48V Low Frequency Inverters: A](#)

Q4: What is the expected lifespan of a 48V low frequency inverter? A4: With proper maintenance and care, a well-built 48V low frequency inverter can last for many years. The expected ...



[Calculate Battery Size for Inverter Calculator](#)

Mar 14, 2025 · The Calculate Battery Size for Inverter Calculator helps you determine the optimal battery capacity needed to support your inverter system. By inputting critical parameters such ...

[Calculate Battery Size for Inverter Calculator](#)

Mar 14, 2025 · The Calculate Battery Size for Inverter Calculator helps you determine the optimal battery capacity needed to support your inverter ...



[48V Inverter vs. 12V Inverter: Core Differences and How to ...](#)

Mar 19, 2025 · If you're planning a power system, whether you choose a 48V or 12V inverter has a direct impact on efficiency, cost, and long-term reliability.

Contact Us

For technical specifications, project proposals, or partnership inquiries, please visit:
<https://www.bukhobuhle.co.za>

Scan QR Code for More Information



<https://www.bukhobuhle.co.za>