

How many watts can a solar inverter carry





Overview

A single solar inverter can deploy about 40 watts when it is not working or at night. This illustrates how significant it is to know about power use. How many Watts should a solar panel inverter have?

For example, if your total solar panel wattage is 5,000 watts, you would ideally choose an inverter with a continuous power rating of around 5,000 watts and a peak power rating of at least 6,000 watts (5,000 watts + 20% buffer). How to Calculate Your Solar Panel Size?

.

How many solar panels can a 5 kW inverter use?

You will also need to consider the wattage of the solar panels you plan to use. For example, if you have a 5 kW inverter and each of your solar panels is rated at 300 watts, you can calculate the maximum number of panels by dividing the inverter's capacity by the panel wattage: $5,000 \text{ watts (inverter)} / 300 \text{ watts (panel)} = \text{approximately } 16.67$.

How many solar panels can an inverter handle?

To effectively determine the number of solar panels an inverter can handle, you must first assess the size of your solar panel array. The overall capacity of your solar installation is defined by the wattage and number of panels. You can expect that the inverter should match or slightly exceed the combined wattage produced by the solar panels.

What are the different solar inverter sizes?

Solar generators range in size from small generators for short camping trips to large off-grid power systems for a boat or house. Consequently, inverter sizes vary greatly. During our research, we discovered that most inverters range in size from 300 watts up to over 3000 watts. In this article, we guide you through the different inverter sizes.



How many watts can a solar inverter carry



[How Many Solar Panel Need For Fan and TV?](#)

Feb 22, 2022 · TV watts + fan watts = number of solar panels needed (plus 10% to 20% for extra power) This formula is the same as you try to use ...

[5kva Inverter Load Capacity](#)

5kva Inverter Load Capacity Looking for the best 5kVA inverter price in Zambia that gives you value and high return on your investment? Then look no further than the Lento 5kVA inverter. ...



[The Only Inverter Size Chart You'll Ever Need](#)

Sep 25, 2023 · Solar generators range in size from small generators for short camping trips to large off-grid power systems for a boat or house. Consequently, inverter sizes vary greatly. ...

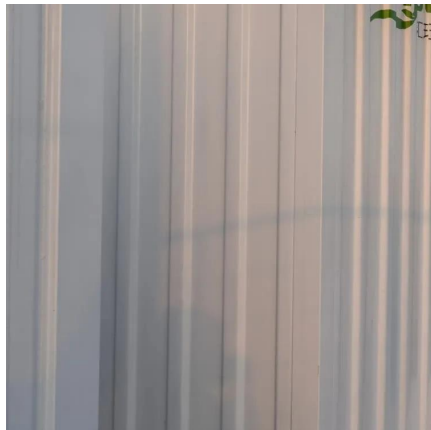
[What Inverter Size Do You Need to Run a ...](#)

For the recommended inverter size, we have rounded off the results. For instance 350 watts plus 25% is 437 watts, but you won't find an inverter ...



[How to Choose the Right Size Solar Inverter: Step-by-Step ...](#)

Jul 15, 2025 · Wondering what size solar inverter do I need for your solar system? This guide walks you through calculating inverter size based on panel capacity, power usage, and safety ...



[How Many Solar Panels Can I Connect to an Inverter? A Complete Guide](#)

3 days ago · Learn how to optimize your solar power system by understanding how many solar panels can be connected to an ...



[How Many Solar Panels Can One Inverter Handle? - RES Solar](#)

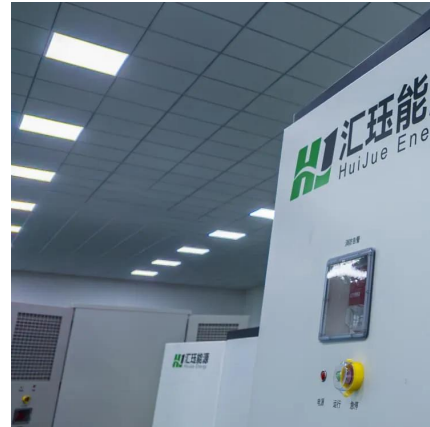
Oct 23, 2025 · How many solar panels for a 2000-watt inverter? For a 2000-watt inverter, the number of solar panels depends on panel wattage, but a general guideline is around 6 to 8 ...





[How to Calculate Solar Panel, Battery, and ...](#)

Jun 3, 2024 · Calculate How Much Power You Will Need Before sizing your solar panel system components, it's essential to understand your energy ...



[How Many Solar Panels Can I Connect to an ...](#)

Oct 28, 2022 · Hopefully this information has resolved the question 'how many solar panels can I connect to an inverter?' If you're still in any doubt ...

[How many solar panels can an inverter ...](#)

Sep 20, 2024 · Solar panels are a crucial component of your solar energy system, but understanding how many can be connected to your inverter is ...



[What Can a 2000 Watt Inverter Run?](#)

Jun 17, 2023 · When determining 'what can a 2000 watt inverter run' there's few factors to consider. Which i have explained in this post in detail.



[How to Choose the Right Size Solar Inverter: ...](#)

Jul 15, 2025 · Wondering what size solar inverter do I need for your solar system? This guide walks you through calculating inverter size based on ...



[How many solar panels can an inverter handle](#)

Sep 20, 2024 · Solar panels are a crucial component of your solar energy system, but understanding how many can be connected to your inverter is crucial for optimal performance. ...

[What can a 2000 watt inverter run?](#)

Jun 12, 2021 · Once you know the starting and running watts of each device, you can calculate how many appliances a 2000 watt inverter run power.



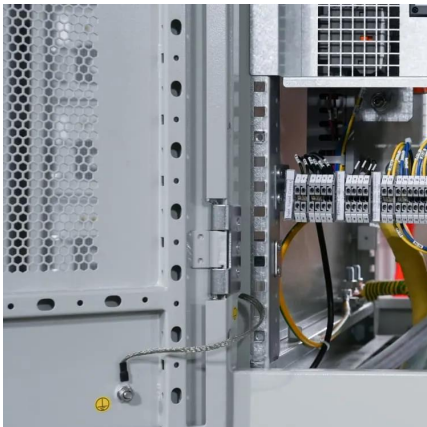
[Inverter Size Calculator - self2solar](#)

Feb 20, 2025 · Optimize your solar system by calculating the ideal inverter size. Simply input panel specs for a recommended inverter power range ...



[How to Calculate Solar Panel, Battery, and Inverter Size](#)

Jun 3, 2024 · Calculate How Much Power You Will Need Before sizing your solar panel system components, it's essential to understand your energy needs. This will help you determine the ...

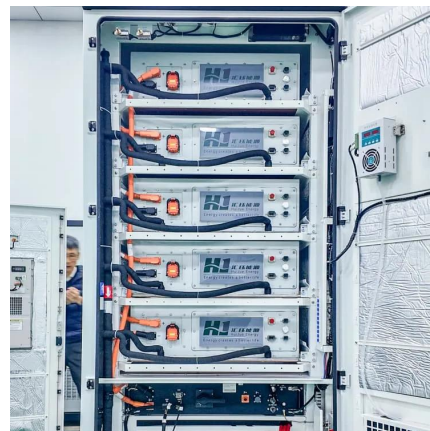


[What will a 5000W Inverter Run? Heavy Load](#)

Nov 17, 2023 · A 5000 watts inverter can power several heavy electronic appliances. The watts requirement of each household appliance should ...

[Inverter Size Calculator - self2solar](#)

Feb 20, 2025 · Optimize your solar system by calculating the ideal inverter size. Simply input panel specs for a recommended inverter power range that ensures efficiency and safety today!



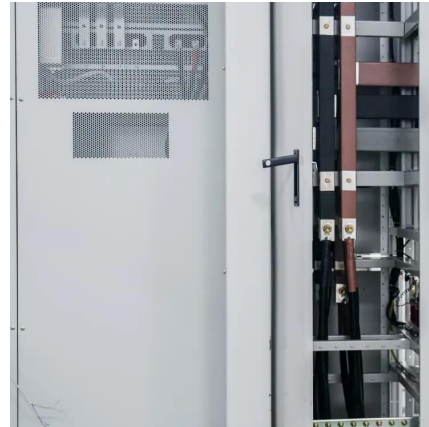
[1kva To 2.5kva Solar Energy System: What It ...](#)

The 1kva to 2.5kva (12/24v) solar system can carry lighting systems, TVs, sound systems, computers, and small to medium-sized fridges. Of ...



[How Many Solar Panels for A 10kva Inverter?](#)

Jul 16, 2024 · Generally, a 10kVA inverter requires a minimum of 24 to 27 solar panels, each with a wattage of 350W or more. However, this ...

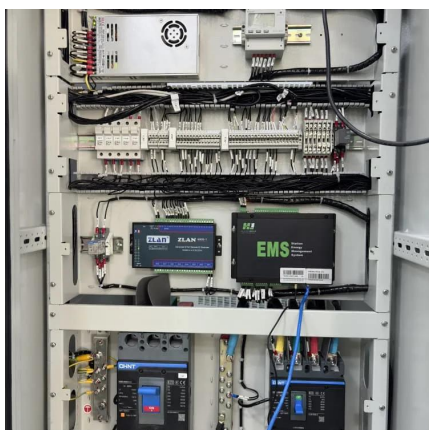
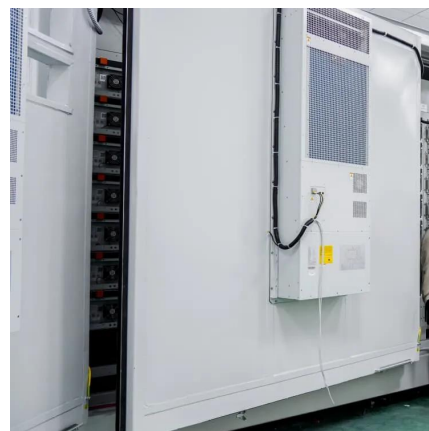


[How Much Power Does Solar Inverter Use and How to ...](#)

Aug 23, 2024 · In short, the power of a solar inverter varies based on its efficiency, size, and activity. These are the important factors when calculating your solar inverter's overall energy ...

[How Many Solar Panels Can I Connect to an Inverter? A ...](#)

3 days ago · Learn how to optimize your solar power system by understanding how many solar panels can be connected to an inverter. Explore inverter specifications, wiring configurations, ...



[How Many Solar Panels Can Go On One Inverter?](#)

Oct 17, 2025 · Inverter capacity is measured in kilowatts (kW), and most household inverters are between 3kW and 10kW. To determine the number of solar panels needed for a 3000 watt ...



Contact Us

For technical specifications, project proposals, or partnership inquiries, please visit:
<https://www.bukhobuhle.co.za>

Scan QR Code for More Information



<https://www.bukhobuhle.co.za>