

How many strings of tool batteries





Overview

Can a lithium ion battery pack have multiple strings?

Whenever possible, using a single string of lithium cells is usually the preferred configuration for a lithium ion battery pack as it is the lowest cost and simplest. However, sometimes it may be necessary to use multiple strings of cells. Here are a few reasons that parallel strings may be necessary:

Can you add a battery to a string?

Adding cells in a string increases the voltage; the capacity remains the same. If you need an odd voltage of, say, 9.50 volts, connect five lead acid, eight NiMH or NiCd, or three Li-ion in series. The end battery voltage does not need to be exact as long as it is higher than what the device specifies. A 12V supply might work in lieu of 9.50V.

Why is a single string battery set-up important?

A single weak or bad cell can exponentially lower the capacity of the entire battery pack. A properly engineered system can improve the overall reliability, but only when additional equipment and significant engineering time is invested. Whenever possible, a single string set-up should be considered.

Why are parallel lithium strings important?

Since lithium cells must be managed on a cell level, parallel lithium strings dramatically increase the complexity and cost of the battery management and introduce many additional points of failure and failure modes not found with a single string.



How many strings of tool batteries



[Ultimate 12V-60V Power Tool Battery Guide: Voltage, ...](#)

Apr 8, 2025 · This article systematically introduces the impact of power tool battery type (Li-ion, NiCd, NiMH), voltage (12V, 18V, 20V and above), compatibility and capacity on tool ...

[Strings, Parallel Cells, and Parallel Strings](#)

Feb 15, 2016 · Strings, Parallel Cells, and Parallel Strings Whenever possible, using a single string of lithium cells is usually the preferred configuration for a lithium ion battery pack as it is ...



[Essential Guide to Power Tool Batteries: Types, ...](#)

Jan 25, 2025 · Furthermore, this guide will provide insights into battery maintenance, charging practices, and troubleshooting common issues. By the end of this comprehensive resource, ...



[How To Calculate The Number Of Strings And Parallel ...](#)

It's very simple, increasing voltage in series and increasing capacity in parallel. The standard voltage for ternary lithium batteries is 3.7 V. If 4.2 V is fully charged, the three strings are 12 V, ...



[BU-302: Series and Parallel Battery Configurations](#)

Single Cell Applications
Series Connection
Tapping Into A Series String
Parallel Connection
Series/Parallel Connection
Terminology to Describe Series and Parallel Connection
Safety Devices in Series and Parallel Connection
Simple Guidelines For Using Household Primary Batteries
Simple Guidelines For Using Secondary Batteries
The battery industry specifies the number of cells in series first, followed by the cells placed in parallel. An example is 2s2p. With Li-ion, the parallel strings are always made first; the completed parallel units are then placed in series. Li-ion is a voltage based system that lends itself well for parallel formation. Combining several cells into See more on batteryuniversity ev-chargingstation

How To Calculate The Number Of Strings And Parallel ...

It's very simple, increasing voltage in series and increasing capacity in parallel. The standard voltage for ternary lithium batteries is 3.7 V. If 4.2 V is fully charged, the three strings are 12 V, ...

[How many strings of outdoor energy storage batteries are ...](#)

Jul 26, 2024 · HOW DOES THE NUMBER OF STRINGS AFFECT PERFORMANCE? The cumulative performance of outdoor energy



storage batteries is influenced significantly by the ...



[How many strings are there of 42 lithium batteries](#)

How many cells are in a set of lithium iron phosphate batteries? The whole set of batteries is 14 strings multiplied by 10 cells = 140 cells. Summary: Series and parallel have their own ...

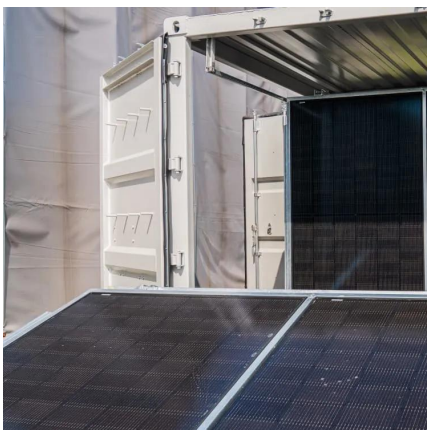
[How many strings are there in a 20v lithium battery pack](#)

Talking about this, we will be using this article to provide you with a small guide on how to charge the Bauer 20V lithium battery. Make sure that you go through the steps provided carefully to ...



[BU-302: Series and Parallel Battery Configurations](#)

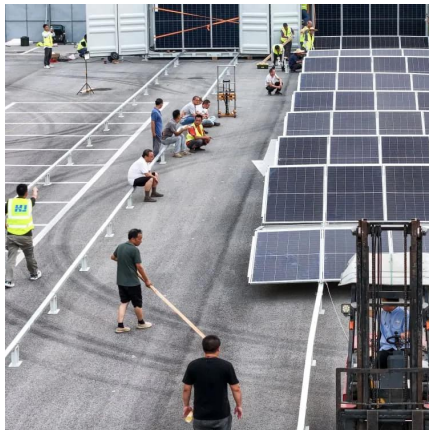
BU-302: Configuraciones de Baterías en Serie y Paralelo (Español) Batteries achieve the desired operating voltage by connecting several cells in series; each cell adds its voltage potential to ...





[Ultimate 12V-60V Power Tool Battery Guide: ...](#)

Apr 8, 2025 · This article systematically introduces the impact of power tool battery type (Li-ion, NiCd, NiMH), voltage (12V, 18V, 20V and above), ...

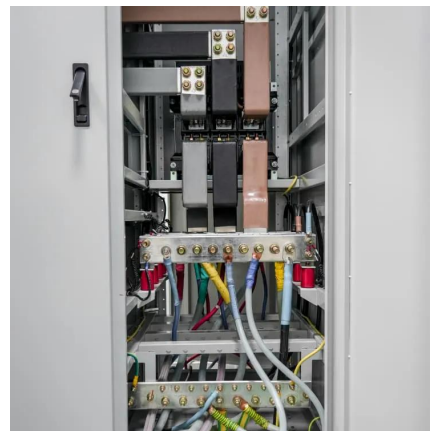


[How to calculate the number of battery strings and parallels](#)

What is cells per battery calculator? » Electrical » Cells Per Battery Calculator The Cells Per Battery Calculator is a tool used to calculate the number of cells needed to create a battery ...

[How many strings of tool batteries](#)

How many strings should a lithium battery have? Therefore, the lithium battery must also be about 58V, so it must be 14 strings to 58.8V, 14 times 4.2, and the iron-lithium full charge is about 3.4V, it ...



Contact Us

For technical specifications, project proposals, or partnership inquiries, please visit:
<https://www.bukhobuhle.co.za>



Scan QR Code for More Information



<https://www.bukhobuhle.co.za>