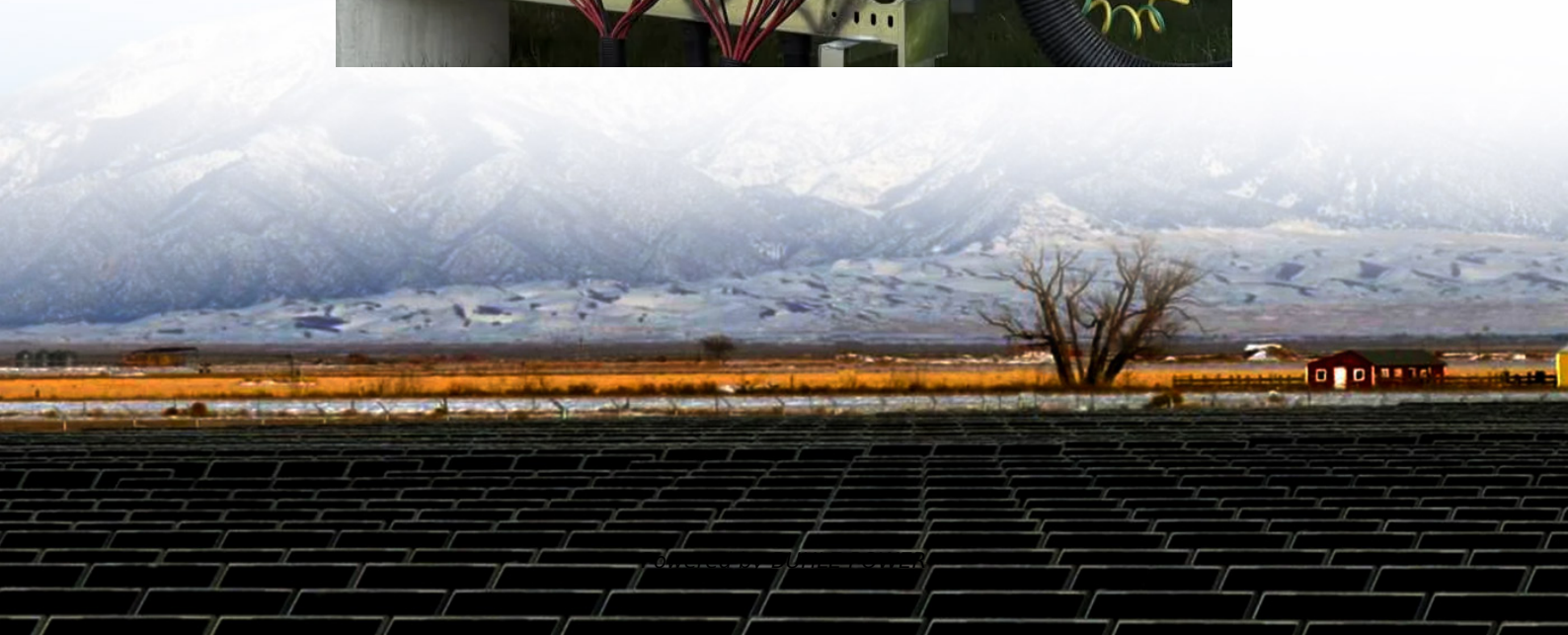


How many layers does solar panel glass have





Overview

What is the top layer of a solar panel?

The top layer of most solar panels is a sheet of tempered glass, which accounts for nearly three-quarters of a crystalline panel's total weight. As the panel's first line of defense, this layer protects the sensitive solar cells underneath weather and debris.

What are the components of a solar panel?

A solar panel typically consists of a junction box, back sheet, solar cells, encapsulant layer, glass cover, and frame. The solar cells generate electricity, the back sheet covers the rear, the junction box has electrical connections, the glass protects the cells, the frame provides structural support, and the encapsulant binds everything together.

What are the layers of a solar panel?

Here are some layers of the solar panel and their functions: 1. Junction Box
Junction box is a safety box used for electrical circuits or electrical cable connections. The use of a junction box aims to ensure that the cable or network connection on the cable is not disturbed by activity and is not dangerous. 2. Backsheet.

What does a solar panel look like?

From the outside, a solar panel looks like a simple sheet of glass in a metal frame. But that sleek exterior hides a sophisticated, multi-layered system where every single part has a critical job to do. Think of it as a high-tech sandwich, with each layer working together to catch sunlight and turn it into clean electricity for your home.



How many layers does solar panel glass have

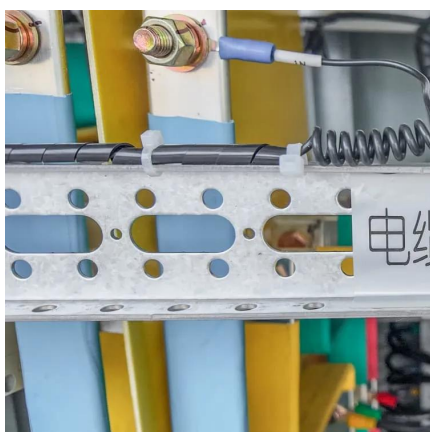


[Structure and Operating Principles of Solar ...](#)

Oct 12, 2020 · Structure of Solar Panels Solar panels are divided into 8 components: aluminum frame, tempered glass, EVA layer, solar cell ...

[Solar panel components: A complete guide to ...](#)

Aug 27, 2025 · The top layer of most solar panels is a sheet of tempered glass, which accounts for nearly three-quarters of a crystalline panel's ...



[Exploring the Layers of a Solar Panel Structure](#)

Nov 17, 2023 · A solar panel typically consists of a junction box, back sheet, solar cells, encapsulant layer, glass cover, and frame. The solar cells generate electricity, the back sheet ...

[How many layers does the photovoltaic panel tempered ...](#)

Different solar panels have different glass widths depending on their goals. A thin-film solar panel is the cheapest type of solar panel on the market so it uses a relatively thin layer of standard ...



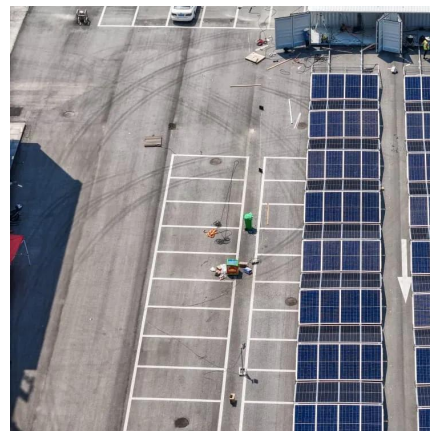
[Exploring the Layers of a Solar Panel Structure](#)

Nov 17, 2023 · A solar panel typically consists of a junction box, back sheet, solar cells, encapsulant layer, glass cover, and frame. The solar cells ...



[How many layers does a solar panel have?.. NenPower](#)

Mar 10, 2024 · The outermost layer of a solar panel is paramount in ensuring the longevity and operational capabilities of the inner components. Often crafted from materials such as ...



[Solar panel components: A complete guide to every part](#)

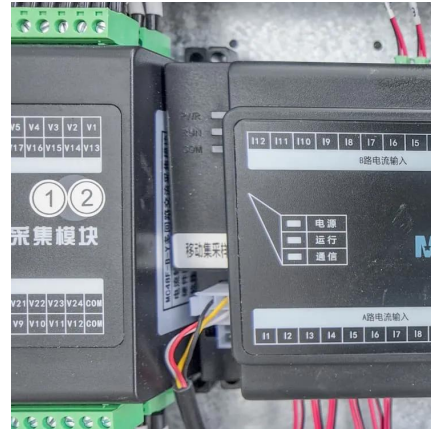
Aug 27, 2025 · The top layer of most solar panels is a sheet of tempered glass, which accounts for nearly three-quarters of a crystalline panel's total weight. As the panel's first line of defense, ...





What is the role of the glass layer in monocrystalline solar panels?

The tempered glass layer, typically 3-4 mm thick, is engineered to withstand hailstones traveling at 50 mph. In 2019, a solar farm in Texas survived a severe hailstorm with minimal damage, ...



Solar Panel Components Guide , Orlando FL , Radiant Energy

Aug 20, 2025 · The very top layer of any solar panel is a sheet of high-transmission tempered glass, usually about 3-4 mm thick. Its most obvious job is to be a tough, transparent barrier, ...

Getting to Know the Layers on Solar Panels and Their Functions

Oct 21, 2024 · Getting to Know the Layers on Solar Panels and Their Functions In the era of transition to renewable energy, solar panels are increasingly popular as a solution to meet ...



The Anatomy of A Solar Panel , edp

May 3, 2022 · A layer of glass is added over the collection of solar cells to protect them from chipping and other kinds of damage from the elements. Frames are also used to mount solar ...



[Solar Panel Components Guide , Orlando FL](#)

Aug 20, 2025 · The very top layer of any solar panel is a sheet of high-transmission tempered glass, usually about 3-4 mm thick. Its most ...



[Essential Guide to Understanding Solar Panel Layers \(With ...](#)

Aug 20, 2025 · Discover the different layers of a solar panel and how each one plays a vital role in generating clean, reliable energy. Learn how solar panels work from the inside out.

[Structure and Operating Principles of Solar Panels. DAT Group](#)

Oct 12, 2020 · Structure of Solar Panels Solar panels are divided into 8 components: aluminum frame, tempered glass, EVA layer, solar cell layer, backsheet, junction box, DC cable, and ...



Contact Us

For technical specifications, project proposals, or partnership inquiries, please visit:
<https://www.bukhobuhle.co.za>



Scan QR Code for More Information



<https://www.bukhobuhle.co.za>