

# How many kw does a centralized inverter have





## Overview

---

How much power does a central inverter use?

The power of the central inverter equipment is between 50 kw and 630 kw, and the system topology adopts the first stage power electronics to convert direct current into alternating current, and the full bridge central inverter is converted. In the case of power frequency isolation transformers, the protection level is generally IP 20.

What is a central inverter system?

Discover our solar energy solutions for your central inverter systems design Central inverters convert power on multiple strings of connected solar panels. They are rated from around 600 kW to 4000 kW. Central inverters typically rely on single-stage power conversion, and most inverter designs are transformer-based or isolated.

How many kilowatts can a central inverter handle?

Pad-mounted central inverter co-located with a medium-voltage transformer. The first PV inverters were developed in the 1980s as a spinoff of drive system technologies. At the time, all models could be considered central inverters rated to handle no more than a few kilowatts.

What are the features of central inverter?

3. Features of central inverter Its biggest feature is the high power and low cost of the system. However, due to the fact that the output voltage and current of different PV strings are often not fully matched (especially when the PV strings are partially blocked due to clouds, shadows, stains, etc.).



## How many kw does a centralized inverter have

---



### [Top 10 Central Inverters for Utility-Scale Solar PV Projects](#)

Oct 9, 2024 · Central inverters play a critical role in utility-scale solar photovoltaic (PV) installations, converting the direct current (DC) generated by large solar arrays into alternating ...

### [Central inverter introduction and functional analysis - ...](#)

Feb 12, 2024 · 1. Introduction of central inverter  
The power of the central inverter equipment is between 50 kw and 630 kw, and the system topology adopts the first stage power electronics ...

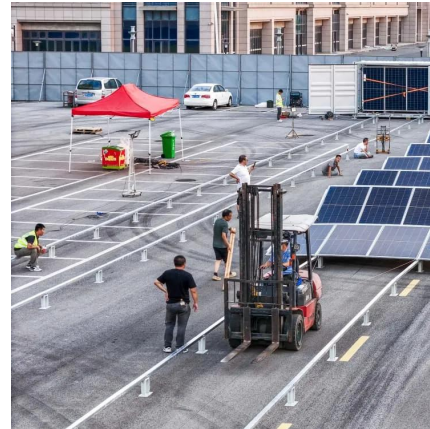


### [Top 10 Central Inverters for Utility-Scale Solar ...](#)

Oct 9, 2024 · Central inverters play a critical role in utility-scale solar photovoltaic (PV) installations, converting the direct current (DC) ...

### [Photovoltaic power station centralized inverter](#)

Photovoltaic power station centralized inverter  
Central inverters convert power on multiple strings of connected solar panels. They are rated from around 600 kW to 4000 kW. Central inverters ...



### Central inverter solutions

Overview Central inverters convert power on multiple strings of connected solar panels. They are rated from around 600 kW to 4000 kW. Central inverters typically rely on single-stage power ...



### String vs Centralized Photovoltaic Inverter System Selection ...

1. Introduction The selection of an appropriate photovoltaic (PV) inverter system is a crucial decision in the design and installation of solar power generation systems. Among the various ...



### Central Solar Inverters by SunGrow

The difference is the size. Central inverters are exclusively meant for utility-scale applications such as industrial facilities, large buildings, and very ...







### [Comparing Central vs String Inverters for Utility-Scale PV ...](#)

May 14, 2024 · This article will overview perhaps the most essential components in a PV system, inverters, and compare the two main options dominating today's utility-scale market: central ...



### [Central Solar Inverters by SunGrow , SunBridger Energy](#)

The difference is the size. Central inverters are exclusively meant for utility-scale applications such as industrial facilities, large buildings, and very large field arrays or even floating ...



### [What is a centralized photovoltaic inverter?.. Industry News](#)

Dec 27, 2024 · A centralized photovoltaic inverter is a system that first gathers multiple parallel strings of solar modules to a DC input, performs maximum power point tracking (MPPT), and ...



### [Central inverter introduction and functional ...](#)

Feb 12, 2024 · 1. Introduction of central inverter  
The power of the central inverter equipment is between 50 kw and 630 kw, and the system ...





### Centralized photovoltaic inverter production

What is a centralized inverter? Central inverters &quot;centralize&quot; the power produced by the plant and are extremely large, converting between 500 kilowatts to 2.5 megawatts each. ...



### ABB central inverters

Oct 4, 2013 · ABB central inverters have a high efficiency level. Optimized and accurate system control and a maximum power point tracking (MPPT) algorithm ensure that maximum energy ...

## Contact Us

---

For technical specifications, project proposals, or partnership inquiries, please visit:  
<https://www.bukhobuhle.co.za>

**Scan QR Code for More Information**



<https://www.bukhobuhle.co.za>