

# **How big an inverter should I use for a 12 volt 150 ah**





## Overview

---

How many Watts Does a 150 watt inverter hold?

A 12V 150ah battery can store 1800 watts so a 2000 watt inverter is the right size. A 24V 150ah battery holds up to 3600 watts, which means you should use a 4000 watt inverter. Inverter capacity is measured in watts. Battery sizes are measured in amp hours, so you need to find out how many watts a 150ah battery is.

How many Watts Does a 150 watt inverter battery last?

Use this guide to check how many watts your appliances are. But for a 150ah battery, you will only use a limited number. Assuming it is a 12V battery and good for 1800 watts, you can load a laptop, a TV, several lights, a fan and a small microwave. You can load all these and the inverter battery should last an hour. This is just an example.

Can a 150ah battery run an inverter?

150ah batteries are often used in off grid homes and RVs to run inverters. One of the things you have to do is make certain that the inverter is large enough, in this case for a 150ah battery. In this guide we will explain what capacity you will need. A 12V 150ah battery can store 1800 watts so a 2000 watt inverter is the right size.

Can a 1000 watt inverter run a 150 watt battery?

If you will only load 900 watts on a 12V 150ah battery, a 1000 or 1200W inverter will do fine. There are good reasons why you may not want to run the battery inverter at full capacity. The most important is that lead acid batteries have a depth discharge rate of 50%. What this means is with a 150ah battery, only 75ah is usable per charge.



## How big an inverter should I use for a 12 volt 150 ah

---

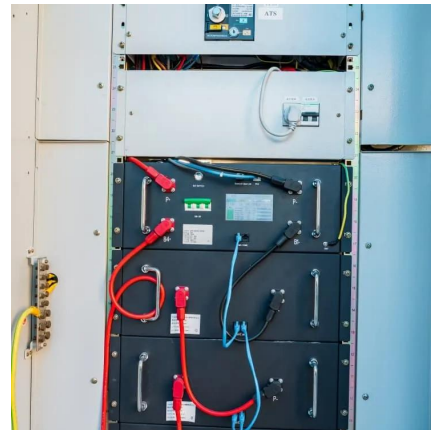


### [What size inverter can you run off a car battery?](#)

Aug 11, 2025 · A typical 12-volt car battery can safely support an inverter ranging from about 150 watts up to 600 watts for regular use without harming the battery. While it is technically ...

### [Calculate Battery Size for Inverter Calculator](#)

Mar 14, 2025 · The Calculate Battery Size for Inverter Calculator helps you determine the optimal battery capacity needed to support your inverter system. By inputting critical parameters such ...



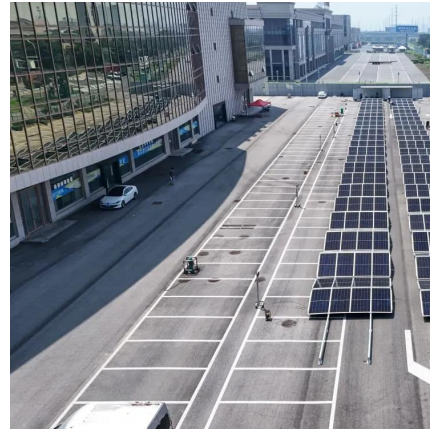
### [How Big of an Inverter Can My Car Battery ...](#)

Mar 26, 2025 · When considering connecting an inverter to your car battery, the first question we need to clarify is: how much power can your car ...



### [How Big of an Inverter Can My Car Battery Handle?](#)

Mar 26, 2025 · When considering connecting an inverter to your car battery, the first question we need to clarify is: how much power can your car battery actually support an inverter? Typically, ...



### [Calculate Battery Size For Any Size Inverter \(Using Our ...](#)

Inverter Battery Size Calculator  
How to Calculate Battery Capacity For Inverter  
How Many Batteries For 3000-Watt Inverter  
Battery Size Chart For Inverter  
Battery to Inverter Wire Size Chart  
To calculate the battery capacity for your inverter use this formula  
$$\text{Inverter capacity (W)} \times \text{Runtime (hrs)} / \text{solar system voltage} = \text{Battery Size} \times 1.15$$
  
Multiply the result by 2 for lead-acid type battery, for lithium battery type it would stay the same  
Example Let's suppose you have a 3000-watt inverter with an 85% efficiency rate and your daily runtime  
See more on [dotwatts Climatebiz](#)

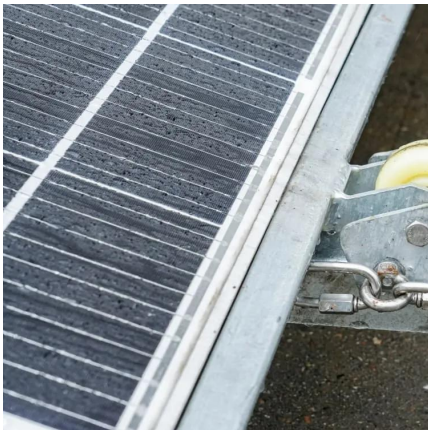
## **The Only Inverter Size Chart You'll Ever Need - Climatebiz**

Sep 25, 2023 · We have created a comprehensive inverter size chart to help you select the correct inverter to power your appliances.

### [The Only Inverter Size Chart You'll Ever Need](#)

Sep 25, 2023 · We have created a comprehensive inverter size chart to help you select the correct inverter to power your appliances.





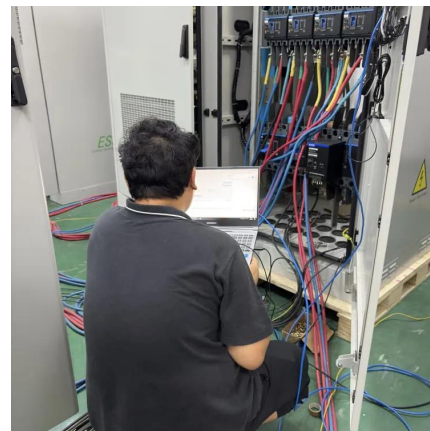
### [How Much Battery Capacity Do You Need With a 12V Inverter?](#)

Jun 14, 2025 · Discover how to calculate the ideal battery capacity for a 12V inverter using simple math, practical examples, and money-saving tips for daily power.



### [Which inverter is best for 150ah battery?](#)

Dec 5, 2025 · The best inverter for a 150Ah battery is a pure sine wave 900VA-1500VA inverter, depending on your load requirements. For solar users or those planning to shift to solar later, a ...



### [Calculate Battery Size for Inverter Calculator](#)

Mar 14, 2025 · The Calculate Battery Size for Inverter Calculator helps you determine the optimal battery capacity needed to support your inverter ...



### [Can an Inverter Be Too Big for Your Battery System?](#)

How to Calculate the Right Inverter Size for Your Battery Match the inverter's continuous wattage rating to the battery's discharge capacity. For a 12V 200Ah battery (2.4kWh), a 2000W inverter ...



### [Inverter Capacity for 150ah Battery Guide](#)

What Can You Run on a 150ah Inverter Battery? The battery will run any appliance load provided it does not exceed 1800 watts for 12 volts and 3600 watts for 24 volts. This also assumes that ...

### [Calculate Battery Size For Any Size Inverter \(Using Our ...](#)

Mar 3, 2023 · So I have made it easy for you, use the calculator below to calculate the battery size for 200 watt, 300 watt, 500 watt, 1000 watt, 2000 watt, 3000 watt, 5000-watt inverter



### [Frequently Asked Questions about Inverters](#)

The battery capacity for a 12-volt Mass Sine 12/1200, for instance, is 240 Ah, while a 24-volt Mass Sine 24/1500 inverter would require at least 150 Ah. The indicated battery capacity is only for ...



## Contact Us

---

For technical specifications, project proposals, or partnership inquiries, please visit:  
<https://www.bukhobuhle.co.za>

### Scan QR Code for More Information



<https://www.bukhobuhle.co.za>