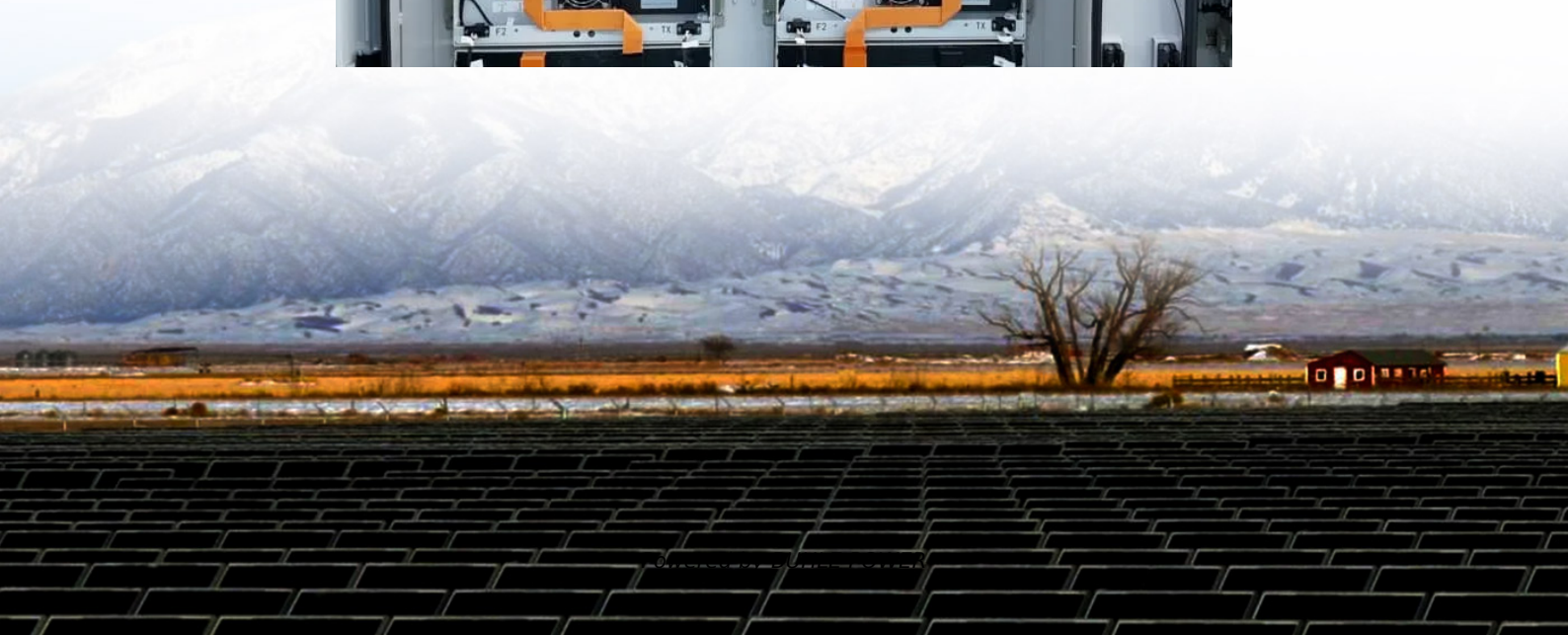


# How big an inverter should I use for 12v100a





## Overview

---

What size inverter for a 100Ah battery?

In general, for a 100ah battery, a 1000 watt pure sine wave inverter will be a good suit. It provides enough power to operate a wide range of household or camping appliances. Now, let's figure out how to choose the right inverter size for a 100ah battery, based on what you need. How to Choose the Right Size Inverter for a 100Ah Battery?

.

Do I need a 24V inverter for a 100Ah battery?

If you have a 12V battery, you will need a 12V inverter, while a 24V battery requires a 24V inverter. Make sure to verify the voltage of your battery before selecting an inverter. When picking an inverter for your 100ah battery, it's best to choose a pure sine wave inverter.

Can I use a 2000 watt inverter with a 100 watt battery?

Yes, you can use a 2000 watt inverter with a 100ah battery. But if you use 2000 watts from your 12v 100ah battery, it will use up the battery faster and over time, it will also shorten the battery's life. Can I use a 1500W inverter with a 100Ah battery?

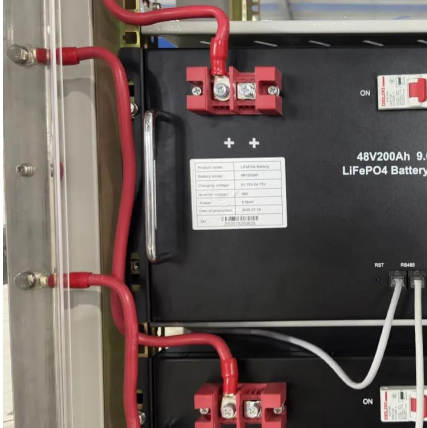
Yes, you can use a 1500 watt inverter with a 100ah battery.

How much power should an inverter use?

300W-500W: Best for efficiency and longer runtimes. 1000W: Suitable for moderate loads, shorter usage. Avoid 1500W+ unless battery is part of a larger bank. Final Thought: It's not just about "how big" your inverter can be — it's about how wisely you use your battery's stored energy.



## How big an inverter should I use for 12v100a



### [What Size Inverter Can I Run Off a 100Ah Battery? A ...](#)

Aug 13, 2024 · A 500W inverter comfortably handles these appliances, allowing for efficient use of the 100Ah battery. However, always verify the power ratings of your specific devices. Medium ...

### [How to Determine What Size Inverter You Can Run Off a ...](#)

Determining the appropriate size of an inverter that can be run off a 100Ah battery involves understanding both the power output of the inverter and the energy capacity of the battery. A ...



### [What size inverter can I run off a 100Ah lithium battery?](#)

A 100Ah lithium battery can typically support an inverter up to 1,200W for 1 hour, assuming a 12V system. Actual runtime depends on load wattage and battery voltage. For example, a 600W ...

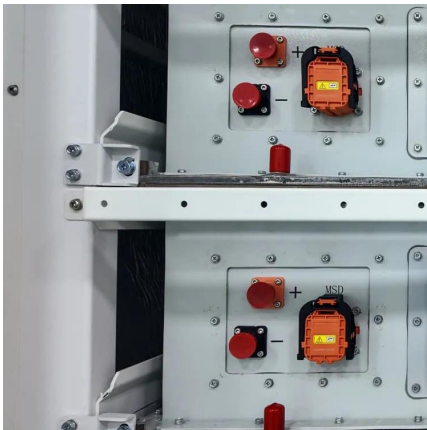
### [Sizing the Right Inverter for 100ah Battery](#)

Jun 7, 2023 · In this guide, I will walk you through the process of sizing the right inverter for a 100ah battery along with an inverter size chart.



### [What Size Inverter Do I Need for a 100Ah Battery?](#)

Apr 10, 2025 · A 100Ah battery typically supports an inverter size up to about 1000 watts for standard applications, balancing efficient runtime and battery health. Selecting the right ...



### [What Size Inverter for 100AH Lithium Battery?](#)

Sep 12, 2024 · Optimizing inverter size for a 100AH lithium battery requires careful consideration--discover key factors that influence efficiency and performance.



### [What Size Inverter for 100Ah Battery? - MWXNE POWER](#)

May 23, 2025 · ? Real-World Tips for Matching Inverter to 100Ah Battery Always use a pure sine wave inverter for sensitive electronics. Fuse your system properly to prevent damage or ...





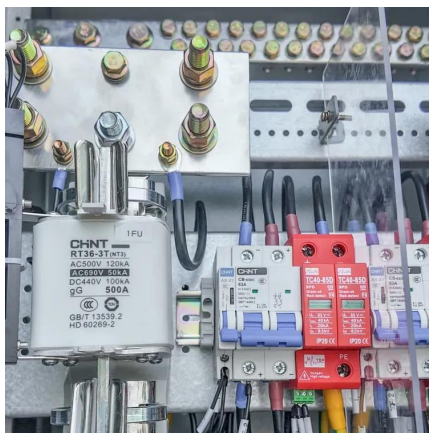
### [Sizing the Right Inverter for 100ah Battery](#)

What Size Inverter For A 100ah Battery? Pure Sine Wave Inverter --- The Ideal Choice Inverter Size Chart Tips For Using An Inverter Keep Reading In general, for a 100ah battery, a 1000 watt pure sine wave inverter will be a good suit. It provides enough power to operate a wide range of household or camping appliances. Now, let's figure out how to choose the right inverter size for a 100ah battery, based on what you need. See more on [dotwatts lifepo4-battery-factory](#)



## **How to Determine What Size Inverter You Can Run Off a ...**

Determining the appropriate size of an inverter that can be run off a 100Ah battery involves understanding both the power output of the inverter and the energy capacity of the battery. A ...



### [What Inverter Size is Best for a 100Ah Battery?](#)

Conclusion Best Inverter Size for a 100Ah Battery: 300W-500W: Best for efficiency and longer runtimes. 1000W: Suitable for moderate loads, shorter usage. Avoid 1500W+ unless battery is ...

### [What Size Inverter Do I Need for a 12V 100Ah Battery?](#)

Dec 19, 2023 · Use inverters with high-efficiency ratings. How Do Different Battery Types Affect Inverter Selection? Different battery types (lead-acid vs lithium) have varying discharge rates ...



### [The Only Inverter Size Chart You'll Ever Need](#)



Sep 25, 2023 · We created a comprehensive inverter size chart to help you select the correct inverter to power your appliances. The need for an inverter size chart first became apparent ...

### [What Size Inverter for 100AH Lithium Battery?](#)

Sep 12, 2024 · Optimizing inverter size for a 100AH lithium battery requires careful consideration--discover key factors that influence efficiency and ...



## Contact Us

---

For technical specifications, project proposals, or partnership inquiries, please visit:  
<https://www.bukhobuhle.co.za>

**Scan QR Code for More Information**



<https://www.bukhobuhle.co.za>