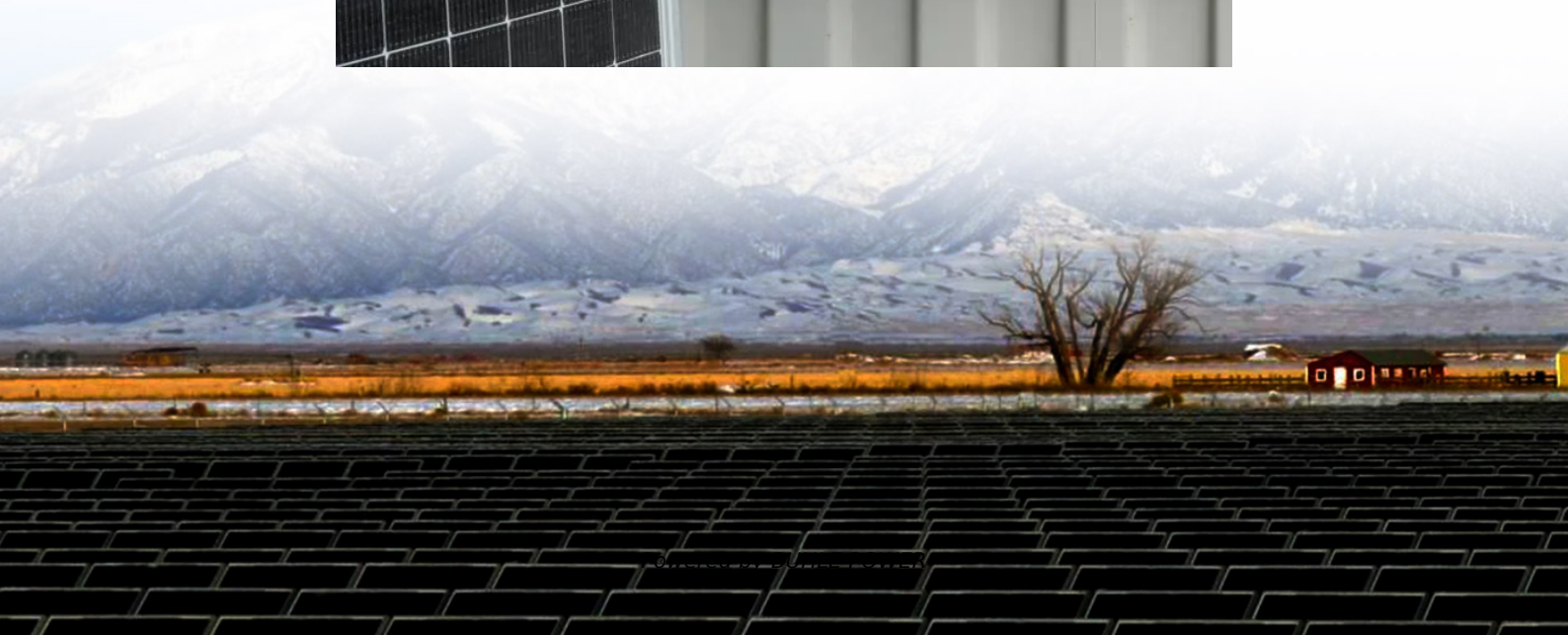


Home base station communication





Overview

What is a base station in a telecommunications network?

A base station is a critical component in a telecommunications network. A fixed transceiver that acts as the central communication hub for one or more wireless mobile client devices. In the context of cellular networks, it facilitates wireless communication between mobile devices and the core network.

Why is a base station important in wireless communication?

A base station is fundamental in wireless communication, because it facilitates the connection between your device and the wider network. Without base stations, mobile data and voice services would be impossible, as there would be no infrastructure to handle the transmission of signals.

What is a base station and how does it work?

A base station is a fixed point of communication between mobile devices and the wider telecom network. It transmits and receives radio signals, enabling your phone to access voice, data, and internet services. Together, thousands of base stations form a seamless web of coverage known as a cellular network. How Does It Work?

.

Why are base stations important?

Base stations are the backbone of modern telecommunications networks, providing the essential infrastructure for wireless communication. They enable mobile devices to connect to the network, manage traffic efficiently, and ensure robust and reliable connectivity across wide areas.



Home base station communication



[What Is the Role of a Base Station in Wireless Communication?](#)

Jun 27, 2025 · Introduction to Base Stations in Wireless Communication Base stations are critical components in wireless communication networks, serving as the intermediary between mobile ...

[Base Stations: The Core and Future of Telecom Networks](#)

Sep 12, 2025 · A telecom base station, also known as a mobile communication base station, is a wireless communication device comprised of antennas, transmitters, and controllers. It ...



[Understanding Base Stations: The Backbone of Wireless Communication](#)

Jan 6, 2025 · Base Station But what exactly is a base station, and how does it work in wireless communication networks? This article explores the concept of base stations, their functions, ...

[Do You Need A Base Station For Two-Way ...](#)

Feb 6, 2015 · A base station, also known as a repeater, is a device used for communicating with or without hand-held radios, but most often with. A ...



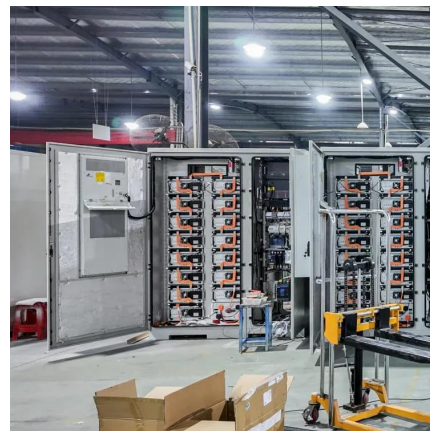
Basestation

A base station (BS) is defined as a fixed communication facility that manages radio resources for one or more base transceiver stations (BTSs), facilitating radio channel setup, frequency ...



Cellular Base Stations

Dec 3, 2025 · As you drive along the highway, you may notice cellular towers or cellular base stations appearing every few miles. A base station is the ...



What is a Base Station in Telecommunications?

What is a Base Station? A base station is a critical component in a telecommunications network. A fixed transceiver that acts as the central communication hub for one or more wireless mobile ...





Types of Base Stations

Jul 23, 2025 · Base stations are one of the widely used components in the field of wireless communication and networks. It is an access point or ...



Mobile communication base station

The mobile communication base station refers to radio wireless transmission between mobile communication switching center and telephone terminal. The base station plays an important ...



Base Station's Role in Wireless Communication Networks

A base station is fundamental in wireless communication, because it facilitates the connection between your device and the wider network. Without base stations, mobile data and voice ...



What Is A Base Station?

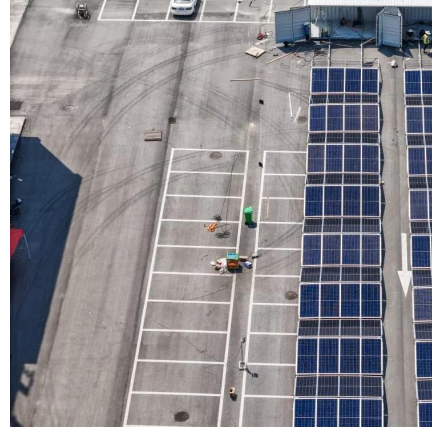
Apr 22, 2024 · A base station is an integral component of wireless communication networks, serving as a central point that manages the transmission and reception of signals between ...





Home Base Station

A home base station is defined as a type of base station that operators provide to subscribers, typically limited to members of a household, facilitating localized wireless communication. AI ...

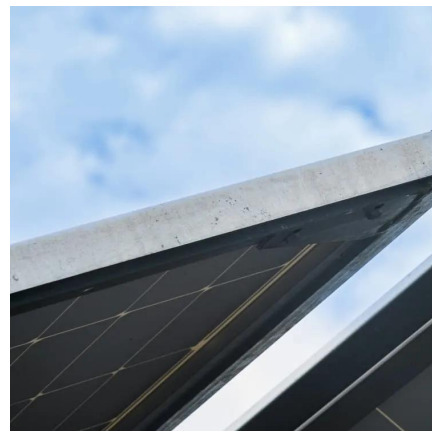


[What is a Base Station?](#)

Apr 1, 2023 · The electromagnetic waves emitted by base stations and mobile phones are like air, filling us all around. Everyone knows mobile ...

[What Does a Base Station Do and Why Is It Essential for ...](#)

Sep 5, 2025 · A base station is a fixed point of communication between mobile devices and the wider telecom network. It transmits and receives radio signals, enabling your phone to access ...



Base Stations

Jul 23, 2025 · The present-day tele-space is incomplete without the base stations as these constitute an important part of the modern-day scheme of wireless communications. They are ...



Base Station's Role in Wireless Communication Networks

What is a base station? A base station is a critical component of wireless communication networks. It serves as the central point of a network that connects various devices, such as ...



What are Base Station in Telecommunications?

Nov 21, 2025 · A base station connects your phone to the network. It acts as a hub between mobile devices and the core system.

Introduction of base station and Remote ...

Jul 22, 2022 · Base Station, generally refers to the public mobile communication base station, the base station is used to provide signals to ...



COMMUNICATION CONTROL METHOD. BASE STATION. HOME BASE STATION...

A communication control method includes: an establishment step of establishing, between a home base station selected from a plurality of home base stations in control of a gateway device and ...



Contact Us

For technical specifications, project proposals, or partnership inquiries, please visit:
<https://www.bukhobuhle.co.za>

Scan QR Code for More Information



<https://www.bukhobuhle.co.za>