

High quality 220 gfcı breaker in Lithuania





High quality 220 gfci breaker in Lithuania



[2 Pole 20 amp GFCI Breaker , Siemens QF220 A](#)

The Siemens QF220A is a 2 pole GFCI plug in circuit breaker. It has a 20 amp current rating and a voltage rating of 120/240V. These breakers are intended for use in Siemens EQ, Siemens ...

[Shop High-Quality GFCI Breakers for Reliable Electrical Safety](#)

Shop for reliable gfci breakers from trusted suppliers. Find durable, efficient, and cost-effective solutions for your electrical needs. Bulk orders welcome.



[Shop High-Quality GFCI Breakers for Reliable Electrical Safety](#)

Feb 6, 2025 · Shop for reliable gfci breakers from trusted suppliers. Find durable, efficient, and cost-effective solutions for your electrical needs. Bulk orders welcome.



[SIEMENS Q220GF Pole Gfci Breaker Fault Gfi Amplifier Circuit](#)

Mar 8, 2025 · The Siemens Q220GF circuit breaker is constructed with high-quality materials and is designed for long-lasting performance. It features a rugged, weather-resistant enclosure that ...



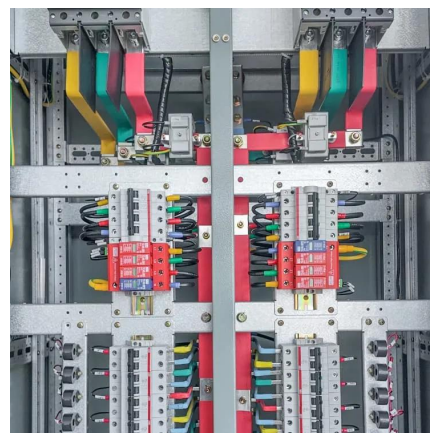
[220v gfcı breaker, 220v gfcı breaker Suppliers and ...](#)

The 220v GFCI breaker is a specific type of GFCI designed to work with systems that operate at 220 volts, commonly used in various residential and commercial settings.



[TOP ELECTRIC BREAKER SUPPLIERS IN LITHUANIA](#)

TOSUN is one of the most professional circuit breaker suppliers in China. If you're going to buy or wholesale bulk high quality circuit breaker made in China, welcome to get more information ...



[220 GFCI Breaker Factory: Reliable & Certified](#)

Find trusted 220 GFCI breaker factories with verified suppliers. Get certified, customizable options for industrial and residential use. Click to explore top-rated manufacturers now.





[Buy GFCI 078477726792 from Leviton in Lithuania](#)

The GFCI 078477726792 is designed to provide optimal performance and durability in various applications. Known for its high-quality construction and innovative features, it is a preferred ...



[2 Pole 20 amp GFCI Breaker , Siemens QF220 ...](#)

The Siemens QF220A is a 2 pole GFCI plug in circuit breaker. It has a 20 amp current rating and a voltage rating of 120/240V. These breakers are ...



[Siemens Q120df 20 Amp AfcI Gfci Dual Function Circuit Breaker](#)

Shop Siemens Q120df 20 Amp AfcI Gfci Dual Function Circuit Breaker at best prices at Desertcart Lithuania. FREE Delivery Across Lithuania. EASY Returns & Exchange.



[20A 2-Pole GFCI Hydraulic Circuit Breaker , LB220-GF , Leviton](#)

20A 2-Pole GFCI Branch Circuit Breaker with Hydraulic Magnetic Trip Technology and Plug-On Installation. 120/240V EASY - Leviton's revolutionary design allows the entire Load Center to ...



Contact Us

For technical specifications, project proposals, or partnership inquiries, please visit:
<https://www.bukhobuhle.co.za>

Scan QR Code for More Information



<https://www.bukhobuhle.co.za>