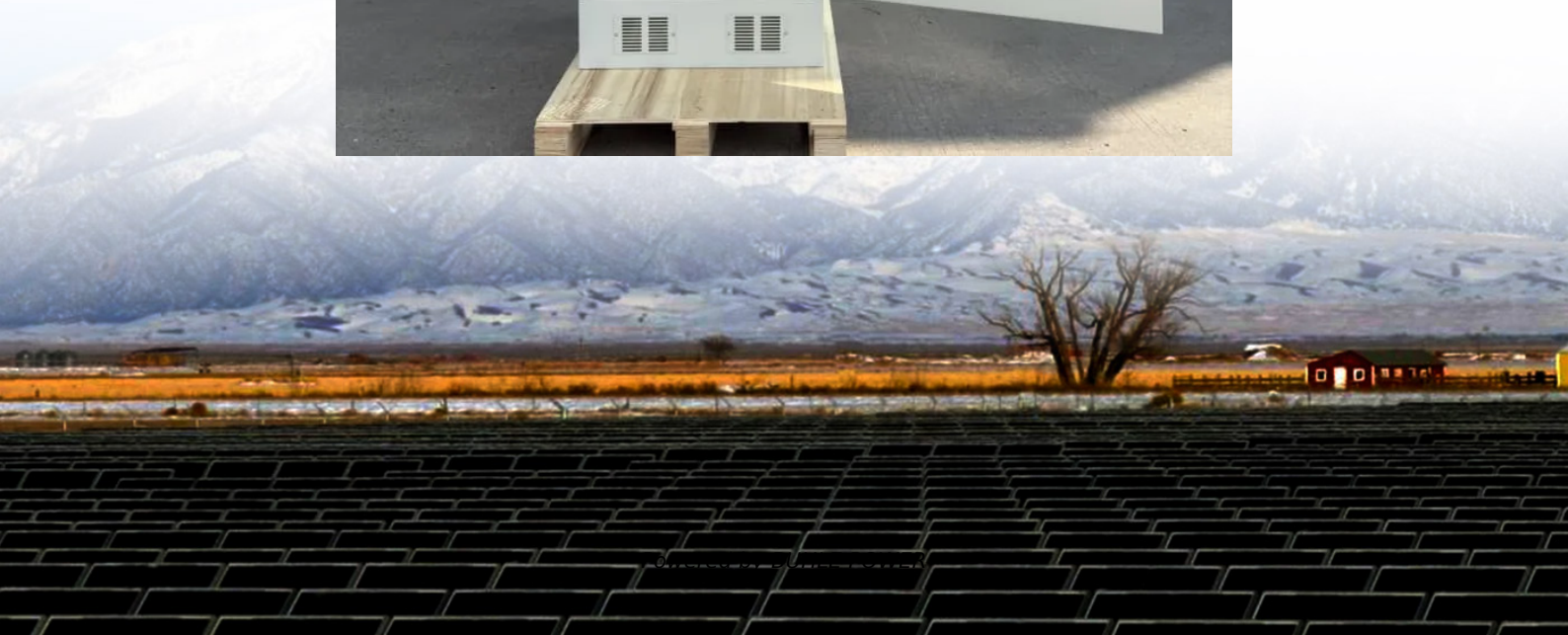


Earthquake-resistant photovoltaic folding container for subway stations





Earthquake-resistant photovoltaic folding container for subway station



[Great East Japan Earthquake](#)

Mar 11, 2012 · The Great East Japan Earthquake tested the ability and role of the newly-established Division of Health Security and Emergencies in the Western Pacific Regional ...

Earthquakes

3 days ago · Earthquakes can strike suddenly and without warning. An earthquake is a violent and abrupt shaking of the ground, caused by movement between tectonic plates along a fault ...



[Myanmar earthquake response 2025](#)

Mar 30, 2025 · Sagaing earthquake in Myanmar
On 28 March 2025, two powerful earthquakes struck central Myanmar's Sagaing Region near Mandalay. The first, with a magnitude of 7.7, ...



[WHO Responds to Nepal Earthquake](#)

Nov 7, 2023 · Working closely with the government and partners, WHO is supporting to respond to the urgent health needs of the affected populationA 6.4 magnitude earthquake hit Nepal's ...



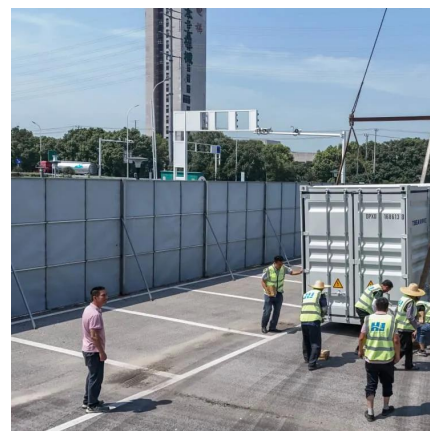
Earthquakes

Jan 23, 2024 · The Earth Observatory shares images and stories about the environment, Earth systems, and climate that emerge from NASA research, satellite missions, and models.



[WHO response to Myanmar Earthquake 2025](#)

Apr 1, 2025 · On 28 March 2025, two powerful earthquakes struck central Myanmar's Sagaing Region near Mandalay. The first, with a magnitude of 7.7, occurred at 12:50 p.m. local time, ...



[How rehabilitation provided a second chance to an...](#)

Apr 28, 2025 · The earth in Adiyaman, Türkiye, trembled violently on February 6, 2023. For 35-year-old Hamzanur Burak Kizil, everything changed in an instant as buildings collapsed, and ...



Emergency

Nov 13, 2025 · A strong earthquake of 6.4 magnitude hit Nepal's Western Province of Karnali, shortly before midnight, on 3 November 2023. As of 24 November 2023, 154 people (Female: ...



[On the path to recovery: three months after the earthquake ...](#)

Mar 16, 2025 · A 7.3 magnitude earthquake struck Port Vila on 17 December 2024, claimed 14 lives, destroyed critical infrastructure, and displaced over 2000 people who needed to stay in ...

[Vanuatu responds to multiple health challenges following ...](#)

Jan 9, 2025 · On 17 December 2024, a powerful 7.3 magnitude earthquake struck near Port Vila, the capital of Vanuatu, impacting more than a quarter of the country's population. The disaster ...



Contact Us

For technical specifications, project proposals, or partnership inquiries, please visit:
<https://www.bukhobuhle.co.za>



Scan QR Code for More Information



<https://www.bukhobuhle.co.za>