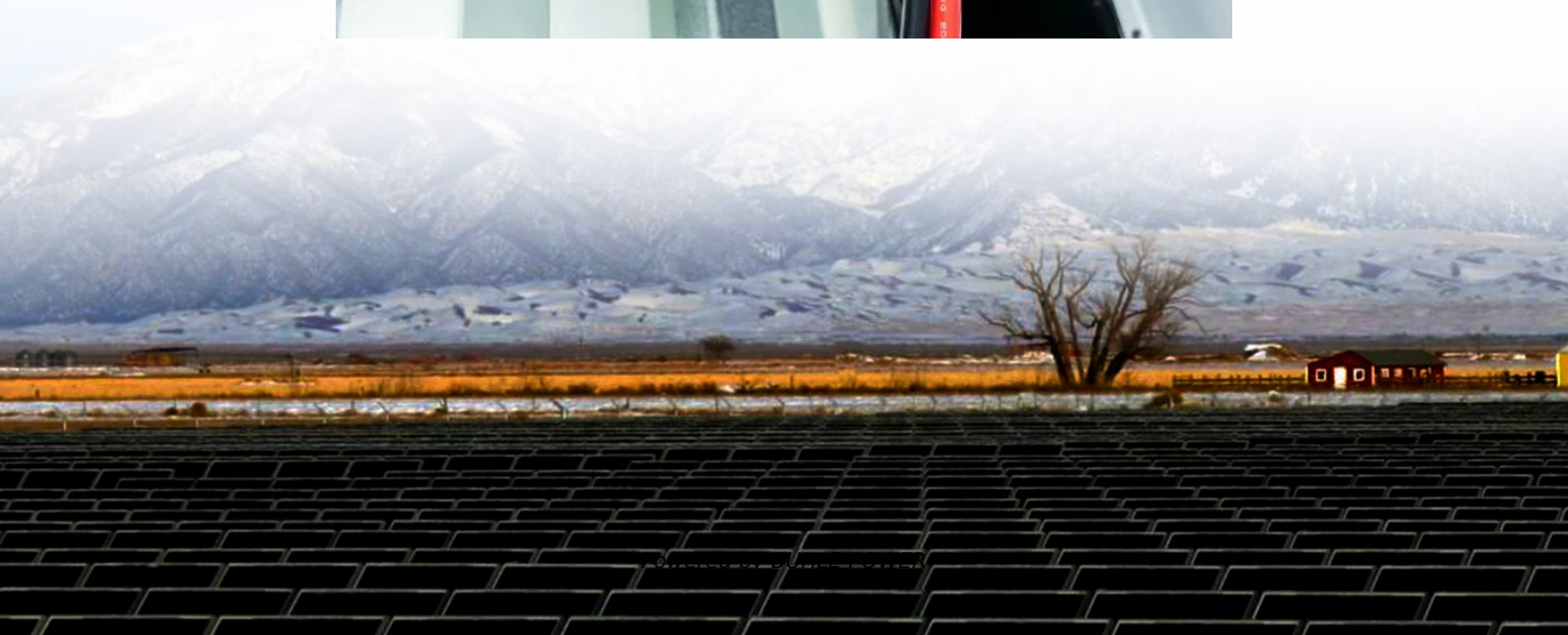


# Double glass solar cell module





## Overview

---

What is a double glass solar module?

In the ever-evolving world of photovoltaic technology, double glass solar modules are emerging as a game-changer. By encapsulating solar cells between two layers of glass, these modules offer unparalleled durability and efficiency. But what exactly sets them apart?

What are double glass solar modules?

.

What is a glass-glass solar panel?

Glass-glass module structures (Glass Glass or Double Glass) is a technology that uses a glass layer on the back of the modules instead of the traditional polymer backsheet. Originally double-glass solar panels were heavy and expensive, allowing the lighter polymer backing panels to gain most of the market share. Thanks to producers such as:

What is a double glass module?

In contrast, double glass modules replace the polymer layer with another glass sheet, creating a robust sandwich structure. At IBC SOLAR, we use 2,0 mm x 2,0 mm glass layers, whereas some other market offerings use thinner 1,6 mm x 1,6 mm layers. This ensures greater durability and longevity.

Why are double glass solar panels bifacial?

Thermal stability: The identical thermal expansion coefficients of the glass layers minimize stress on solar cells during temperature fluctuations. Dual-sided energy Capture: Many double glass modules are bifacial, allowing them to harness sunlight from both sides.



## Double glass solar cell module

---



[Double glass solar module . Maysun Solar](#)

Why Choose Double Glass Solar Modules? Glass-glass solar modules (bifacial modules) increase energy production by approximately 2% to 5% compared to traditional glass-backsheet ...

### [INSTRUCTIONS FOR PREPARATION OF PAPERS](#)

Nov 1, 2025 · ABSTRACT: Double-glass modules provide a heavy-duty solution for harsh environments with high temperature, high humidity or high UV conditions that usually impact ...



[2025 Guide to Dual-Glass Solar Modules: ...](#)

Jul 11, 2025 · Complete guide to dual-glass solar panels: applications, benefits, costs & limitations. Learn when this premium technology ...



[2025 Guide to Dual-Glass Solar Modules: When Premium ...](#)

Jul 11, 2025 · Complete guide to dual-glass solar panels: applications, benefits, costs & limitations. Learn when this premium technology provides genuine value vs conventional panels.



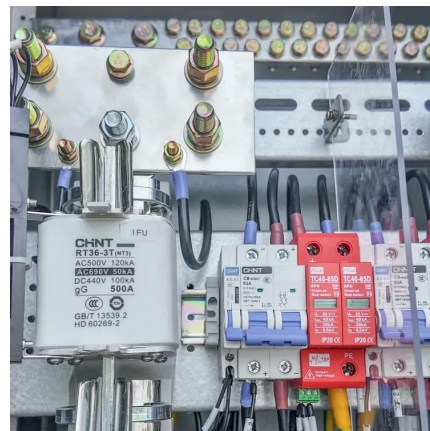
### What are Double Glass Solar Panels?

Nov 17, 2023 · Double glass panels are now widely employed in agriculture, manufacturing, and domestic settings all over the world. Double-Glass modules are the ideal answer to fulfill the ...



### Double-glass PV modules with silicone encapsulation

May 21, 2024 · ABSTRACT Double-glass PV modules are emerging as a technology which can deliver excellent performance and excellent durability at a competitive cost. In this paper a ...



### What are Double Glass Solar Panels?

Nov 17, 2023 · Double glass panels are now widely employed in agriculture, manufacturing, and domestic settings all over the world. Double-Glass ...







### [What is a double glass solar panel? , NenPower](#)

Aug 29, 2024 · Double glass solar panels exemplify a contemporary leap in photovoltaic technology, showcased by their dual construction that offers substantial benefits. With ...



### [Double the strengths, double the benefits](#)

Feb 21, 2025 · Explore IBC SOLAR's double glass module offerings At IBC SOLAR, we are committed to providing cutting-edge photovoltaic solutions tailored to diverse needs. Our ...

### [Double the strengths, double the benefits](#)

Feb 21, 2025 · Explore IBC SOLAR's double glass module offerings At IBC SOLAR, we are committed to providing cutting-edge photovoltaic ...



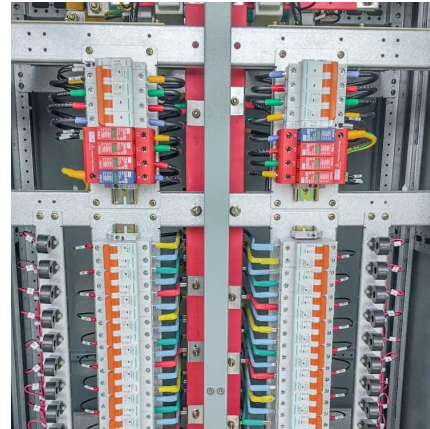
### [What is a double glass solar panel? , NenPower](#)

Aug 29, 2024 · Double glass solar panels exemplify a contemporary leap in photovoltaic technology, showcased by their dual construction that offers ...



### Glass-Glass Solar Panel Technology

Double Glass Technology in PV Glass-glass module structures (Glass Glass or Double Glass) is a technology that uses a glass layer on the back of the modules instead of the traditional ...



### EVO 6R 600-625W N Type TOPCon Bifacial Double-glass ...

Jun 8, 2024 · Bifacial with Double-Glass Module adopts 182\*210mm half cells, bifacial module provide an additional 5%~25% output.

## Contact Us

For technical specifications, project proposals, or partnership inquiries, please visit:  
<https://www.bukhobuhle.co.za>

**Scan QR Code for More Information**



<https://www.bukhobuhle.co.za>