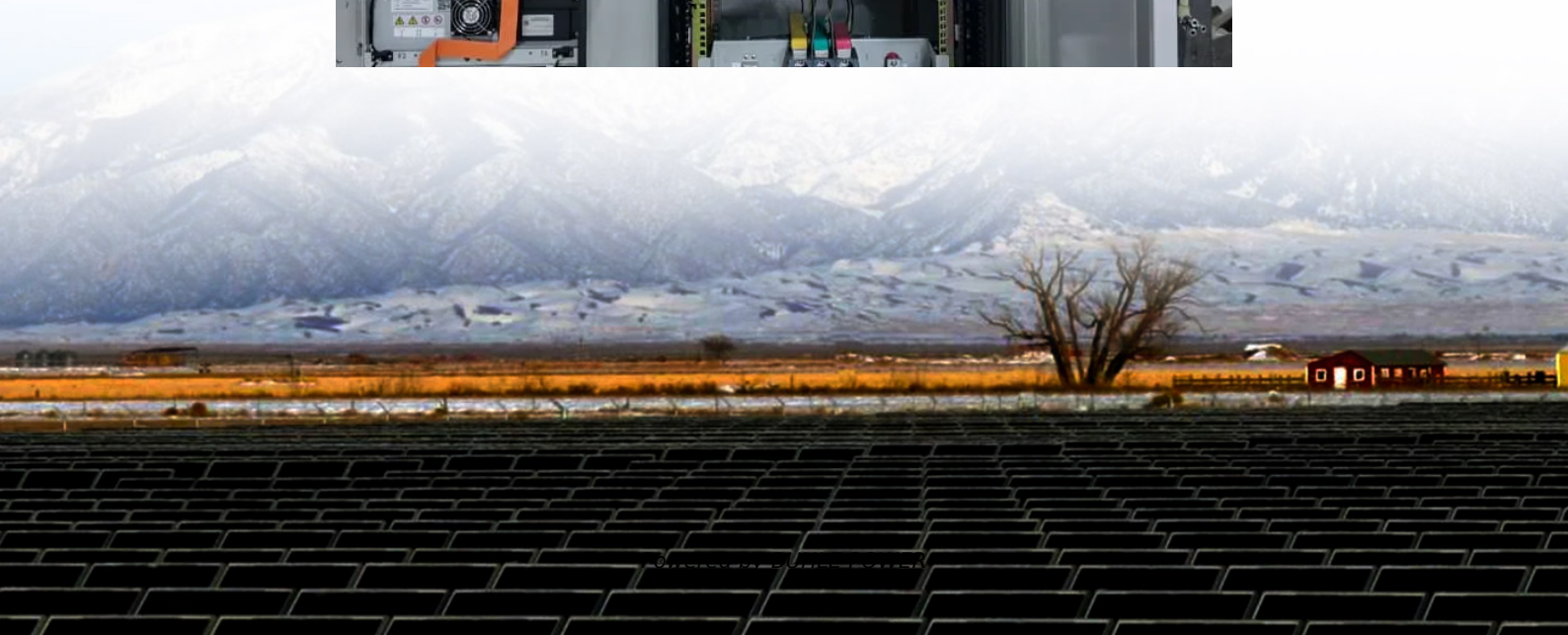


Double-glass component with a light transmittance of 10





Overview

What is visible light transmittance?

Visible Light Transmittance (T_v , %) is the percentage of incident light in the wavelength range of 380 nm to 780 nm that is transmitted by the glass.

Visible Light Outdoors/Indoors ($R_{e\ out/in}$, %) is the percentage of incident solar energy directly reflected by the glass.

What is the transmittance model of quartz glass?

The double thickness transmittance model n is the refractive index of quartz glass and the k is the absorption index of quartz glass. The light at each surface of the glass obeys Fresnel's law and Snell's law. Then the transmittance of quartz glass with thickness of L_1 and L_2 are shown in Eqs.

How is the transmittance of optical glass measured?

The transmittance of optical glass is measured using double beam spectral photometers from the company Perkin Elmer with special modifications. The standard setup enables to measure within a wavelength region from 250 nm up to 2500 nm. The measurement accuracy over the complete spectrum is about $\pm 0.5\%$.

What is the difference between visible light transmittance and visible light reflectance?

Visible Light Transmittance (T_v , %) is the percentage of incident light in the wavelength range of 380 nm to 780 nm that is transmitted by the glass.

Visible Light Reflectance Outdoors/Indoor ($R_{v\ out/in}$, %) is the percentage of incident visible light directly reflected by the glass.



Double-glass component with a light transmittance of 10

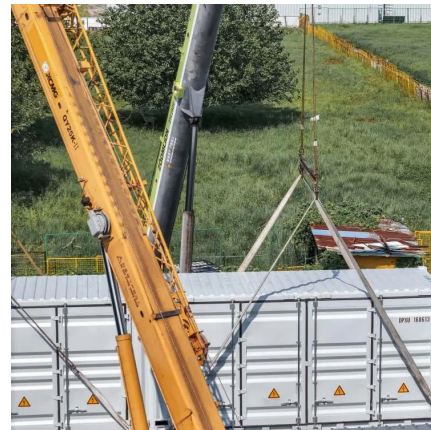


[Explanation of Glass Characteristics \(Transmittance Glossary\)](#)

Jul 28, 2022 · We supply laser, UV, optical filter with integrated system from development, manufacture and sales.

[Understanding Glass Performance Key ...](#)

Nov 18, 2025 · When it comes to choosing the right glass for your facades, windows or doors, understanding key performance measures is crucial. ...



[Understanding Glass Performance Key Metrics](#)

Nov 18, 2025 · When it comes to choosing the right glass for your facades, windows or doors, understanding key performance measures is crucial. These metrics help you evaluate how ...

[Standard Insulated Glass Performance Values](#)

Apr 9, 2024 · Light-to-Solar Gain (LSG) is the ratio of visible light gain to solar gain. $LSG = \frac{\text{(Visible Transmittance)}}{\text{(SHGC)}}$ Color Rendering Index in transmission, D65 (Ra) is the ...



[Gaoming BIPV Solar Panel Glass 10% Transmittance Facade ...](#)

Compared with crystalline silicon components, thin film components are more beautiful in architectural applications, from indoor or outdoor observation, light transmittance and color ...



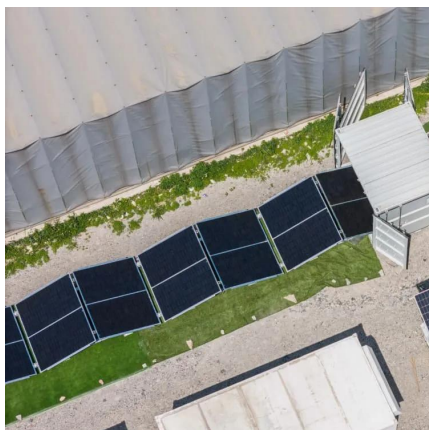
[Performance value terms](#)

Explanation of terms according to EN 410:2011/EN 673:2011 Visible Light Transmittance (Tv, %) is the percentage of incident light in the wavelength range of 380 nm to 780 nm that is ...



[Ningbo Raytech New Energy Materials. Specializing in Double-glass](#)

Project Name: Sichuan Photovoltaic Sun Room
Products used: Raytech 10% light transmission components Fully consider the light transmittance of the sun room, and now the dou





Comparison of transmittance and reflection methods for ...

Apr 1, 2019 · Optical glass is a kind of glass material used for transmission, reflection and refraction of light from ultraviolet, visible to infrared electromagnetic wave region. Optical ...



Glass Performance , Thermosash Building Envelope Solutions

Thermosash offer specialist building envelope and facade solutions from concept to completion. Unitised curtainwalls, commercial aluminium windows and doors, solar shading and integrated ...

Light Reflection and Transmission in Glass

Jan 14, 2008 · When light meets a glass surface, some of the light is reflected, depending on the angle of incidence and the refractive indices of the glass and the medium the light is coming ...



Glass Performance , Thermosash Building ...

Thermosash offer specialist building envelope and facade solutions from concept to completion. Unitised curtainwalls, commercial aluminium ...



Contact Us

For technical specifications, project proposals, or partnership inquiries, please visit:
<https://www.bukhobuhle.co.za>

Scan QR Code for More Information



<https://www.bukhobuhle.co.za>