

Does indoor 5G base station consume electricity





Overview

The 5G NR standard has been designed based on the knowledge of the typical traffic activity in radio networks as well as the need to support sleep states in radio network equipment. By putting the base sta.

How much power does a 5G base station consume?

That's almost a threefold increase compared to 4G (5). One 5G base station is estimated to consume about as much power as 73 households (6), and 3x as much as the previous generation of base stations (5), (7).

Does 5G increase energy consumption?

However, this technological leap comes with a substantial increase in energy consumption. Compared to its predecessor, the fourth-generation (4G) network, the energy consumption of the 5G network is approximately three times higher .

Does 5G New Radio save energy?

Emerging use cases and devices demand higher capacity from today's mobile networks, leading to increasingly dense network deployments. In this post, we explore the energy saving features of 5G New Radio and how this enables operators to build denser networks, meet performance demands and maintain low 5G energy consumption.

Should power consumption models be used in 5G networks?

This restricts the potential use of the power models, as their validity and accuracy remain unclear. Future work includes the further development of the power consumption models to form a unified evaluation framework that enables the quantification and optimization of energy consumption and energy efficiency of 5G networks.



Does indoor 5G base station consume electricity



[Why does 5g base station consume so much power and how ...](#)

Apr 3, 2025 · The power consumption of the 5G base station mainly comes from the AU module processing and conversion and high power-consuming high radio frequency signals, the ...

[How Much Power Does 5G Base Station Consume? , Huijue ...](#)

Aug 26, 2023 · The Silent Energy Crisis in Mobile Networks Have you ever wondered how much energy our hyper-connected world is consuming? 5G base stations, the backbone of next-gen ...



[How much power does 5G consume?](#)

One 5G base station is estimated to consume about as much power as 73 households (6), and 3x as much as the previous generation of base stations (5), (7). When base stations, data centers ...

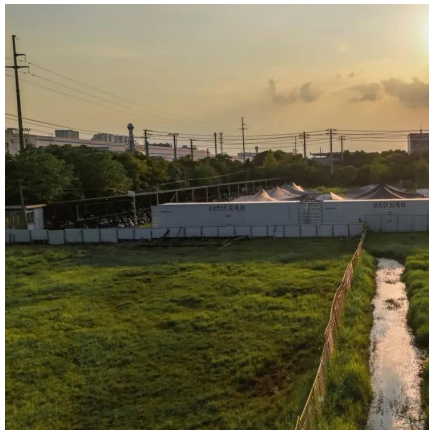
[Power consumption based on 5G communication](#)

Oct 17, 2021 · At present, 5G mobile traffic base stations in energy consumption accounted for 60% ~ 80%, compared with 4G energy consumption increased three times. In the future, high ...



[A technical look at 5G energy consumption and performance](#)

Sep 17, 2019 · How can 5G increase performance and ensure low energy consumption? Find out in our latest Research blog post.



[Optimal energy-saving operation strategy of 5G base station ...](#)

Dec 1, 2025 · To further explore the energy-saving potential of 5 G base stations, this paper proposes an energy-saving operation model for 5 G base stations that incorporates ...



[Comparison of Power Consumption Models for 5G Cellular Network Base](#)

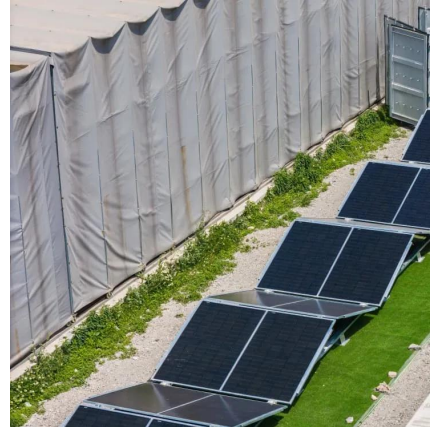
Jul 1, 2024 · This paper conducts a literature survey of relevant power consumption models for 5G cellular network base stations and provides a comparison of the models. It highlights ...





What is the Power Consumption of a 5G Base Station?

Nov 15, 2024 · Compared to its predecessor, 4G, the energy demand from 5G base stations has massively grown owing to new technical requirements needed to support higher data rates ...

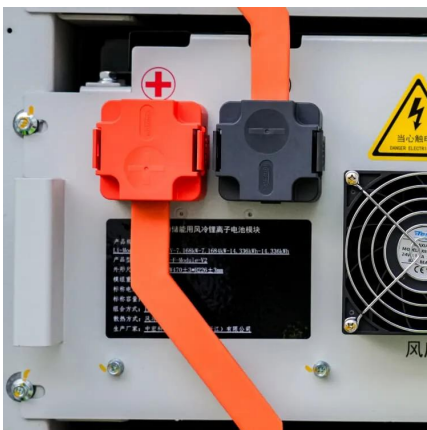


Why does 5g base station consume so much ...

Apr 3, 2025 · The power consumption of the 5G base station mainly comes from the AU module processing and conversion and high power ...

Modelling the 5G Energy Consumption Using Real-world ...

Sep 15, 2025 · Accurate energy consumption modeling is essential for developing energy-efficient strategies, enabling operators to optimize resource utilization while maintaining network ...



What is 5G Energy Consumption?

2 days ago · The 5G network is a dynamic system that consumes energy continually and responds to spikes in network activity. Over 70% of this energy is consumed by RAN ...



Contact Us

For technical specifications, project proposals, or partnership inquiries, please visit:
<https://www.bukhobuhle.co.za>

Scan QR Code for More Information



<https://www.bukhobuhle.co.za>