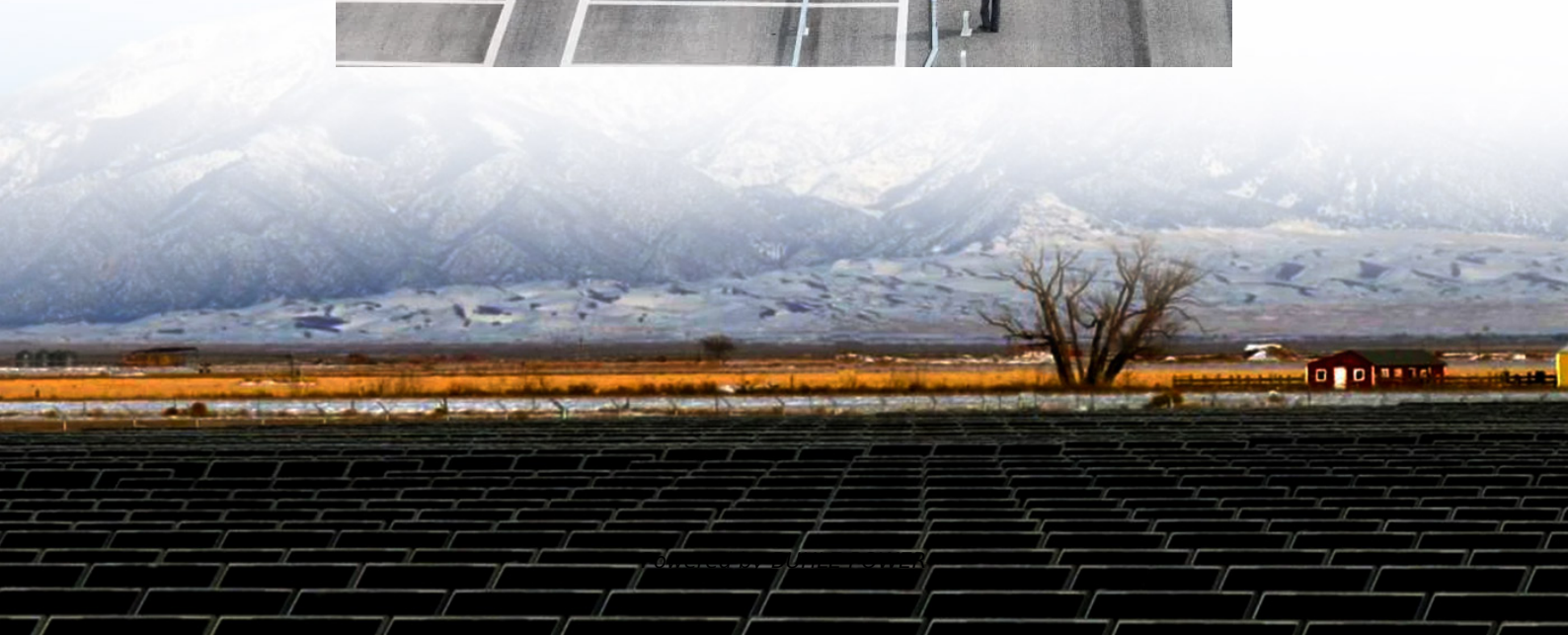
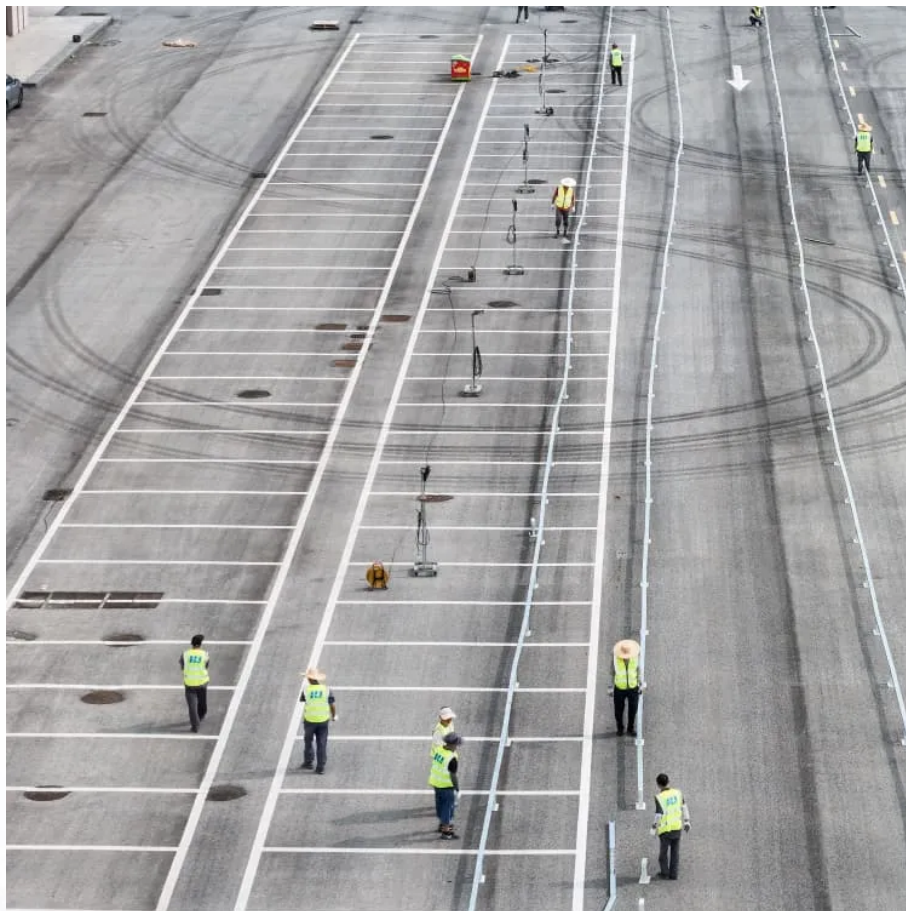


# Dimensions of 575W solar panels





## Overview

---

What is a Jinko 575W solar panel?

The Jinko 575W Solar Panel is a high-performance and durable solution for both residential and commercial solar power systems. Manufactured by Jinko, a leading name in solar technology, these panels are designed to deliver exceptional power output and efficiency, even in challenging environmental conditions.

What are the dimensions of a 300 watt solar panel?

A typical 300-watt solar panel is 65.8 inches long and 36.1 inches wide. It takes up 16.5 sq ft of area.

What are the dimensions of standard solar panels?

Most solar panels are about 1.5 inches thick. The typical classification of solar panel sizes is based on the solar cell size, but it's not very useful for most calculations.

What are the dimensions of a 96-cell solar panel?

96-cell solar panel size. The dimensions of 96-cell solar panels are 41.5 inches long and 63 inches wide. That's a 41.5×63 solar panel.



## Dimensions of 575W solar panels

---



[AE\\_CMD-144BDS\\_575W-595W\\_Ver24](#)

Aug 26, 2025 · The specifications and characteristics contained in this datasheet may deviate slightly from our actual products due to the product developments and uncertainty of ...

[JA 565w 570w 575w 580w 585w 590w N-type Double-glass Solar ...](#)

JA 565w 570w 575w 580w 585w 590w N-type Double-glass Solar Panel Panel Dimensions 2278\*1134\*30mm Brand Name JA Solar Model Number JAM72D40 MB Connector QC 4.10 ...



[Standard Solar Panel Sizes And Wattages ...](#)

1 day ago · 72-cell solar panel size. The dimensions of 72-cell solar panels are as follows: 77 inches long, and 39 inches wide. That's a 77x39 solar ...



[Standard Solar Panel Sizes And Wattages \(100W-500W Dimensions\)](#)

1 day ago · 72-cell solar panel size. The dimensions of 72-cell solar panels are as follows: 77 inches long, and 39 inches wide. That's a 77x39 solar panel; basically, a longer panel, mostly ...





[JKM555-575N-72HL4-\(V\)-F1-EN \(IEC 2016\).ai](#)

Jan 9, 2025 · SPECIFICATIONS Module Type  
JKM555N-72HL4 JKM555N-72HL4-V No. of cells  
Dimensions 144 (6×24) 2278×1134×35mm  
(89.69×44.65×1.38 inch) Weight



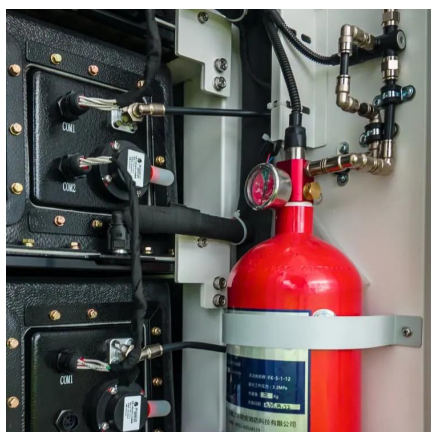
[575 Watt Solar panels for sale , Prices, dimensions, weight,....](#)

3 days ago · 575 Watt Solar panels' range of prices, dimensions, sizes, voltage output, specifications datasheets



[N-type TOPCon Solar Panel 575W 570W 565W 560W 555W ...](#)

EVO 5 Pro Series N-type TOPCon 144 Half Cells  
555W 560W 565W 570W 575W Bifacial Dual  
Glass Solar Module Evo 5 Pro Series Bifacial  
modules combine leading N-type TOPCon ...





### 575 Photovoltaic panel specifications and dimensions

The dimensions of 72-cell solar panels are as follows: 77 inches Solar panels 585W - Jinko Solar Tiger Neo 72HC 565-585W Jinko Solar's Tiger Neo 72HC solar panel is designed to ...

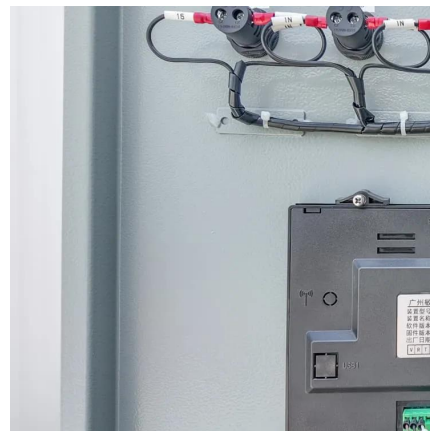


### **JINKO 575W**

The Jinko 575W Solar Panel is a high-performance and durable solution for both residential and commercial solar power systems. Manufactured by Jinko, a leading name in solar technology, ...

### GT575W-144M bifacial topcon solar photovoltaic panels 575w

The topcon solar photovoltaic panels 575w utilizes bifacial technology, allowing it to capture sunlight from both the front and rear sides of the panel. This innovative design enhances ...



## **Contact Us**

---

For technical specifications, project proposals, or partnership inquiries, please visit:  
<https://www.bukhobuhle.co.za>



## Scan QR Code for More Information



<https://www.bukhobuhle.co.za>