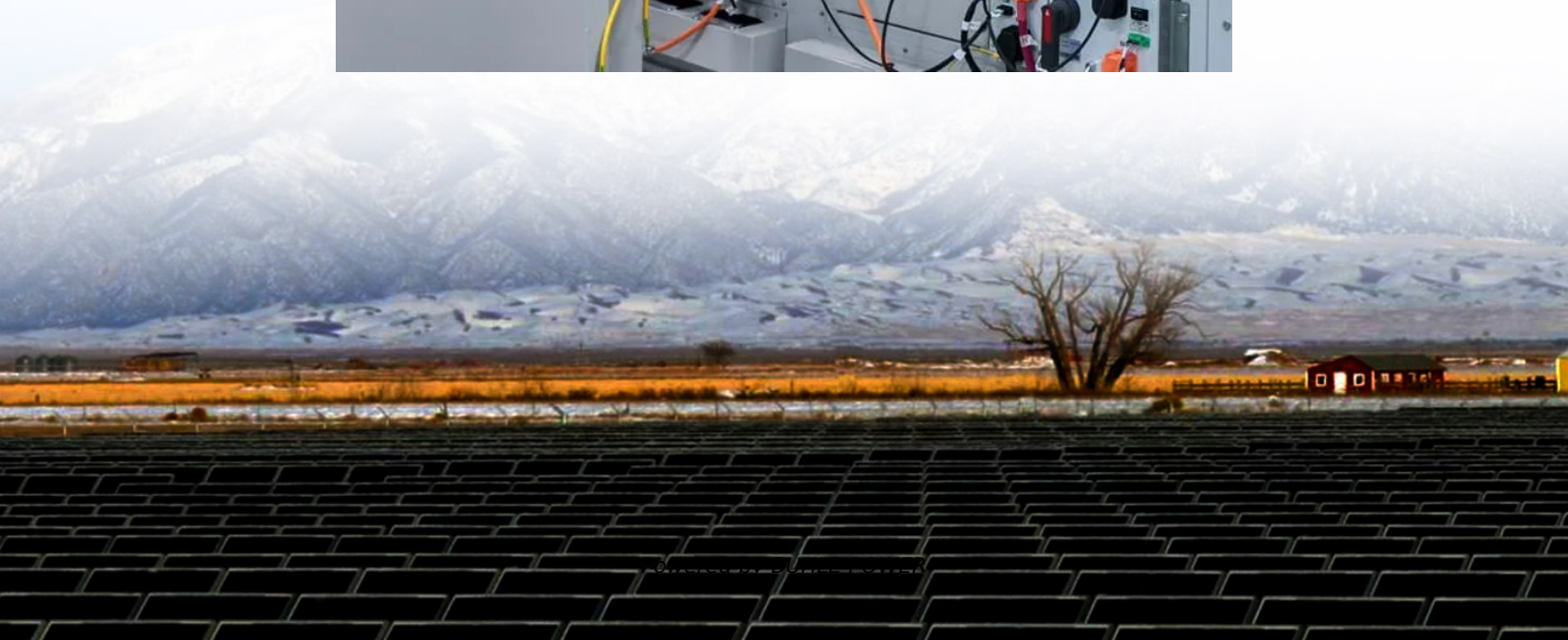


# **DC power supply inverter measurement**





## Overview

---

What is a reference design in a three-phase inverter?

A) This reference design reduces system cost and enables a compact design for isolated phase current and DC-Link voltage measurement in three-phase inverters, while achieving high bandwidth and sensing accuracy. The output of the isolated amplifiers is interfaced to the internal ADC of the MCU using a differential-to-single-ended circuit.

What is advanced power measurement & analysis?

The Advanced Power Measurement and Analysis option (4-PWR, 5-PWR and 6-PWR) automates the setup process for key power measurements and provides tools to evaluate test results based on norms and standards in power supply design.

What is a full scale inverter test?

The full scale that can be measure is 1026 V. The measurement is done by applying a DC-Link voltage between 50 V to 1000 V. During this test, the inverter is running and the motor is disconnected, which brings a switching frequency of 16 kHz. The uncalibrated error is observed to be  $\pm 1\%$  throughout the measurement range. Figure 16.

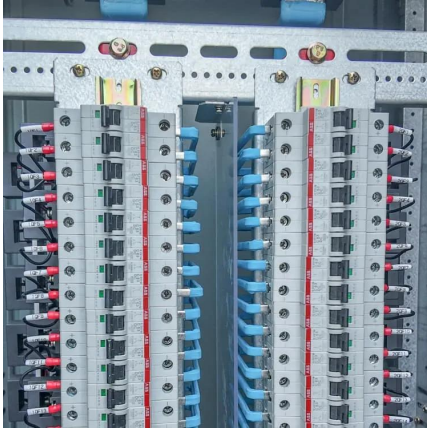
What is a DC power analyzer?

When set up for DC power measurement, these analyzers capture key metrics such as voltage, current, power, energy, and efficiency, while also offering powerful tools for transient analysis, drift monitoring, and data logging.



## DC power supply inverter measurement

---



### [Power Supply Measurement and Analysis with 4/5/6-PWR ...](#)

Introduction  
Preparing For Power Supply Measurements  
Addressing Wide Bandgap Testing Challenges  
Input Analysis  
Harmonics  
Switching Analysis  
Magnetic Analysis  
Frequency Response Analysis  
Output Analysis  
Efficiency  
High efficiency of devices or products is a critical differentiator in today's competitive environment. Advanced Power Measurements and Analysis software enables you to easily measure the efficiency of your power conversion (AC-DC, AC-AC, DC-DC, DC-AC) products. For power products with up to 3 outputs, the Advanced Power Measurements and Analysis s See more on tek Yokogawa Test & Measurement Corporation

### Measurement of Inverter Efficiency - Yokogawa

Measuring Efficiency with High Precision:  
Simultaneous Measurement of Input and Output  
Achieve precise measurement of inverter efficiency by ...

### [What is the correct way to measure DC power ...](#)

Dec 28, 2022 · I modelled a 11 level cascaded multilevel inverter, and I would like to measure the power at the input of the inverter, so I do not know ...



### [High-Bandwidth Phase Current and DC-Link Voltage ...](#)



Apr 13, 2018 · Description This reference design reduces system cost and enables a compact design for isolated phase current and DC-Link voltage measurement in three-phase inverters, ...

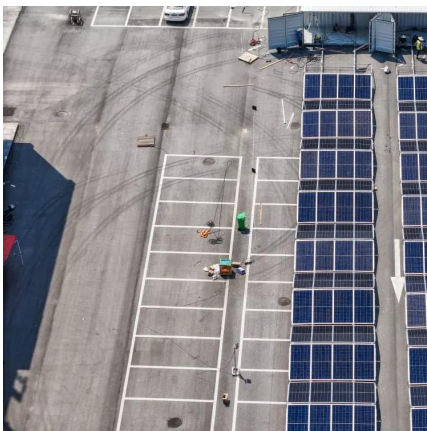
### [Measurement of Inverter Efficiency](#)

Measuring Efficiency with High Precision: Simultaneous Measurement of Input and Output  
Achieve precise measurement of inverter efficiency by simultaneously measuring input and ...



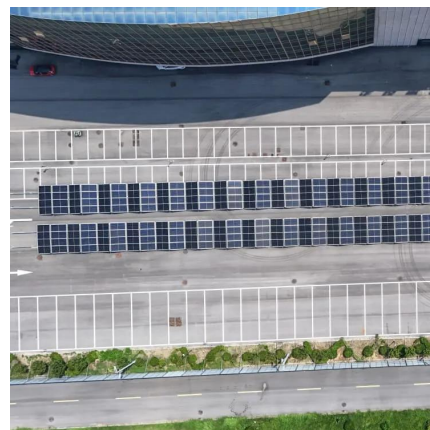
### [Design and Manufacture of Equipment to Test the...](#)

Sep 9, 2023 · In this context, the research and design of devices for measuring and checking power supply parameters become extremely important. These devices not only help to ...



### [What is the correct way to measure DC power at the input of...](#)

Dec 28, 2022 · I modelled a 11 level cascaded multilevel inverter, and I would like to measure the power at the input of the inverter, so I do not know how to properly evaluate the actual input ...







## Power Measurements

May 8, 2025 · In this note, we will introduce the basic theory for DC power supply efficiency calculations, present a physical setup for accurately measuring the important parameters, and ...



## [DC Power Analyzer . Vitrek](#)

1 day ago · DC Power Analyzers Vitrek's precision power analyzers are engineered to deliver highly accurate and flexible DC power analysis--ideal for evaluating power supplies, batteries, ...

## [How To Test An Inverter With Digital ...](#)

Why Use a Multimeter to Test Inverters?  
Multimeters are versatile instruments that allow technicians to check voltage, resistance, continuity, ...



## [How To Test An Inverter With Digital Multimeters: Quick ...](#)

Why Use a Multimeter to Test Inverters?  
Multimeters are versatile instruments that allow technicians to check voltage, resistance, continuity, and diode characteristics. When testing ...



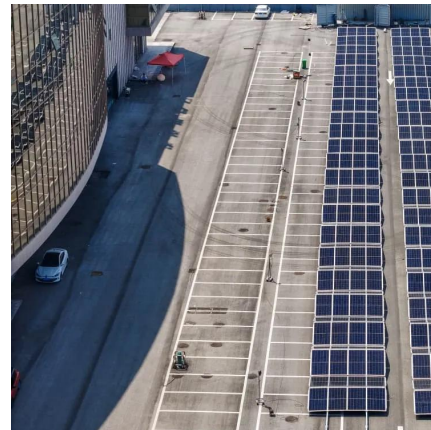


### [Power Supply Measurement and Analysis with 4/5/6-PWR ...](#)

Nov 25, 2025 · The Advanced Power Measurement and Analysis option (4-PWR, 5-PWR and 6-PWR) automates the setup process for key power measurements and provides tools to ...

### Application Note

Apr 21, 2022 · The drive inverter is supplied with DC power from the power supply and generates a three-phase signal (A, B, C) for the motor. Input power  $P_{in}$  and output power  $P_{out}$  of the ...



## Contact Us

---

For technical specifications, project proposals, or partnership inquiries, please visit:  
<https://www.bukhobuhle.co.za>

**Scan QR Code for More Information**



<https://www.bukhobuhle.co.za>