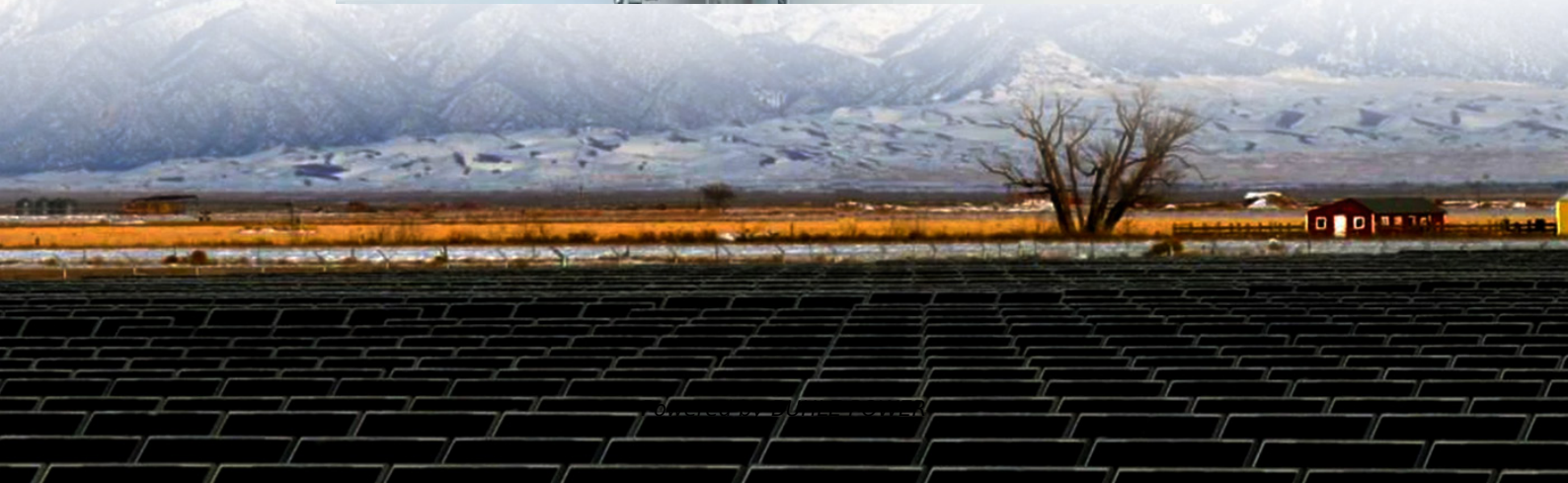


# **Communication tower base station installation specification requirements**





## Overview

---

What are the requirements for mounting antennas on towers & masts?

diameter. Ø The height of the towers at Kudagiri, Farukolhufushi and Stelco Hiya locations, shall be 35m. Ø The height of the tower at Plot N3-32 shall be 25m. Ø Frames for mounting antennas on towers or masts shall be designed upon consideration of the type of tower structure and the type, weight and size of the antenna. implementing joints.

What are the components of a communication tower?

The composition of a typical communication tower includes: Main Materials: Steel or other load-bearing elements. Web Members and Horizontal Braces: Provide stability and distribute stress. Auxiliary Rods: Support smaller loads. Tower Base: Ensures structural integrity and balance.

What is a communication base station?

In the vast telecommunications network, communication base stations play a frontline role. Positioned closest to end users, they serve as gateways for processing customer requests and managing data flow. In the words of "Interesting Communication Engineering Drawings," these stations act like "business trackers," always vigilant to:

What are the requirements for constructing a tower foundation?

Templates shall be precisely fabricated and used in constructing tower foundations in accordance with design specifications. A minimum of two anchor stirrups shall be provided around each leg of a tower and each stripe shall have a safe working load (SWL) of 100KN. a. Anchors must overturning. b.



## Communication tower base station installation specification require

---



### [Process of Installing a Base Transceiver ...](#)

Dec 12, 2024 · Installing a Base Transceiver Station (BTS) is a critical step in building mobile communication networks. Here's a step-by-step guide to ...

### [Complete Guide to 5G Base Station ...](#)

Nov 17, 2024 · Explore how 5G base stations are built--from site planning and cabinet installation to power systems and cooling solutions. Learn the ...



### [Communication tower base station installation ...](#)

Oct 8, 2025 · So very stable structure types like lower lattice towers and towers built of reinforced concrete are used in most cases, although also guyed masts are used for taller application. ...

### [Construction Procedures and Standards of Cellular ...](#)

Feb 15, 2019 · 3.5 The following goals and objectives shall be achieved through these Procedures and Standards in relation to the general construction principles to be applied to Cellular Mobile ...



### [Design Criteria and Installation of Communication Towers](#)

Dec 9, 2024 · This article is about Design Criteria and Installation of Communication Towers for telecommunication Engineers, supervisors and technical and reference from International ...



### [Gateway and Base Station Installation Guide](#)

Aug 11, 2018 · Installation Planning IMPORTANT: This document provides guidelines for the proper placement and installation of Gateways, Base Stations, and the antennas. Failure to ...



### [Process of Installing a Base Transceiver Station \(BTS\)](#)

Dec 12, 2024 · Installing a Base Transceiver Station (BTS) is a critical step in building mobile communication networks. Here's a step-by-step guide to the process: 1.

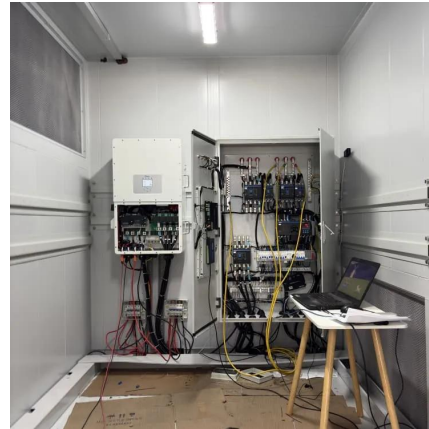






## [Communication Tower Installation and Commissioning ...](#)

Communication Tower Installation and Commissioning Checklist Installation Verify that all fabricated steel sections are match-marked for field assembly with designating numbers or ...



## [Complete Guide to 5G Base Station Construction Key Steps, ...](#)

Nov 17, 2024 · Explore how 5G base stations are built--from site planning and cabinet installation to power systems and cooling solutions. Learn the essential components, technologies, and ...

## [Guidelines on Technical Specifications for the Installation...](#)

Mar 19, 2025 · GENERAL INTRODUCTION These guidelines provide standards to be adhered to by telecommunications services providers/operators, designers, fabricators and installers of ...



### **TS 144 001**

May 15, 2024 · TECHNICAL SPECIFICATION Digital cellular telecommunications system (Phase 2+) (GSM); Mobile Station - Base Station System (MS - BSS) interface; General aspects and ...



### Telecom tower Requirements\_R2

May 14, 2023 · A joint in the arrangement should have an overlay between the two adjacent pipes.  
Ø The depth of the overlay, the base width and the number of pipes in a particular ...



## Contact Us

---

For technical specifications, project proposals, or partnership inquiries, please visit:  
<https://www.bukhobuhle.co.za>

### Scan QR Code for More Information



<https://www.bukhobuhle.co.za>