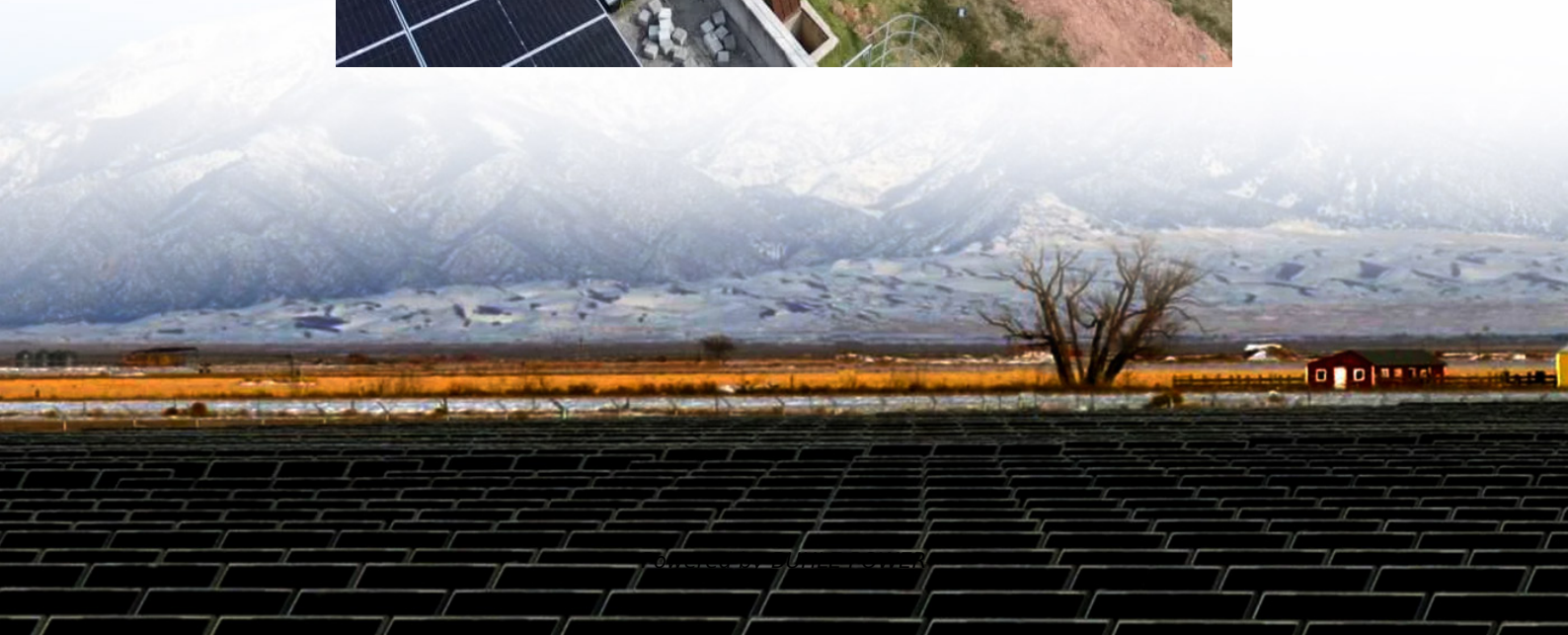


Color difference of all black components





Overview

What makes black a color?

A lack of light is what makes anything black: think about a “black hole” that swallows up everything, including light, that comes near it. Seeing black indicates that there’s no pigment. You might think of black as a color. but it doesn’t belong on the color spectrum. Each of the visible colors corresponds to a distinct range of light wavelengths.

What is the difference between black and white?

White sits at the other end, representing full light intensity and a mix of all wavelengths. So in terms of the color spectrum, black and white sit at opposite ends, with all other colors in between. Black represents zero light intensity and white represents full light intensity. Another way to represent color is using the CMYK color model.

Is black a color mix?

So in terms of pigment chemistry, black is not a color mix per se, but rather the absence of light reflection. However, to create black pigment for paints and inks, all colors are often mixed together until a dark black is achieved. In physics and optics, black is the absence of light or the complete absorption of visible light.

Is black a color?

Black surfaces absorb all wavelengths of visible light. White surfaces reflect all wavelengths of visible light. Colors between black and white reflect only some wavelengths while absorbing others. So in terms of physics, black is not considered a color, as no light is reflected. But this definition depends on how we define “color.”



Color difference of all black components

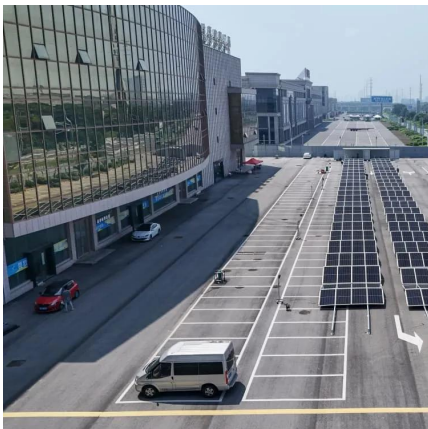


[Do all colors combined make black?](#)

The quick answer is that combining all colors of light produces white, while combining all colors of pigment produces black. This difference occurs because of the nature of light versus pigment. ...

[What Colors Make Black?](#)

Mar 27, 2023 · What exactly is black? A lack of light is what makes anything black: think about a "black hole" that swallows up everything, including light, that comes near it. Seeing black ...



[Is Black Really Black?](#)

9 hours ago · The burst of color that you see on the filter paper proves that black is really a combination of colors. This technique of color separation ...

[Black composition in print: differences in black. Labelprint24](#)

Not all black is the same In our blog, the print experts at labelprint24 give you tips and assistance on how to correctly lay out your print data; today: the black layout. The problem: The data for ...



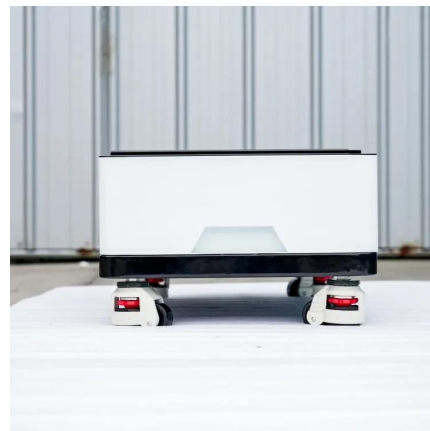
Is Black Really Black?

9 hours ago · The burst of color that you see on the filter paper proves that black is really a combination of colors. This technique of color separation is actually called chromatography, ...



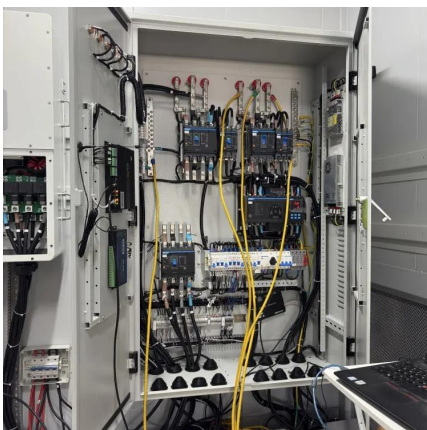
Do all colors combined make black?

The quick answer is that combining all colors of light produces white, while combining all colors of pigment produces black. This difference occurs ...



What makes black black?

As a cultural symbol, the color black communicates power, mystery, and solemnity. As a pigment, carbon-based black offers artists a versatile dark with strong visual impact. Black and light ...





Why do colors make black?

And we'll discuss why combining complementary colors like red and green or blue and yellow results in black. Understanding the fundamentals of color theory can help creatives, designers, ...

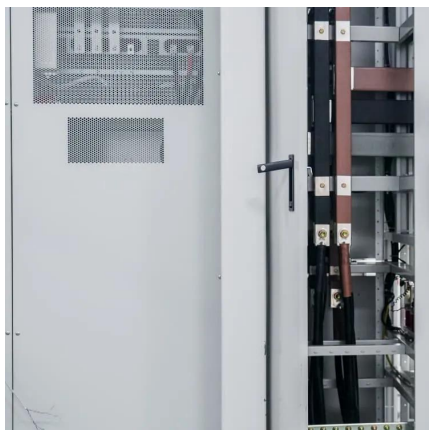


Is black a mix of all colors?

The question of whether black is a mix of all colors is an interesting scientific and philosophical inquiry. On one hand, black paint is often created by mixing together all colors of paint. On the ...

Investigating Ink: Is Black a Color?

Jul 14, 2023 · The water carries some parts of the ink components further than others, and the colors separate out into a range of colors. Different brands use different combinations of ink to ...



What Colors Make Up Black?

Aug 28, 2025 · Uncover the complex nature of black. Learn how it's understood as both an absence and a combination of colors across different contexts.



Color of Black

The difference between M_Y and M_c defines the hue of a black color, known as the undertone (dM). (Fig. 1) Positive dM values indicate a bluish shade, while negative values suggest a ...



Contact Us

For technical specifications, project proposals, or partnership inquiries, please visit:
<https://www.bukhobuhle.co.za>

Scan QR Code for More Information



<https://www.bukhobuhle.co.za>