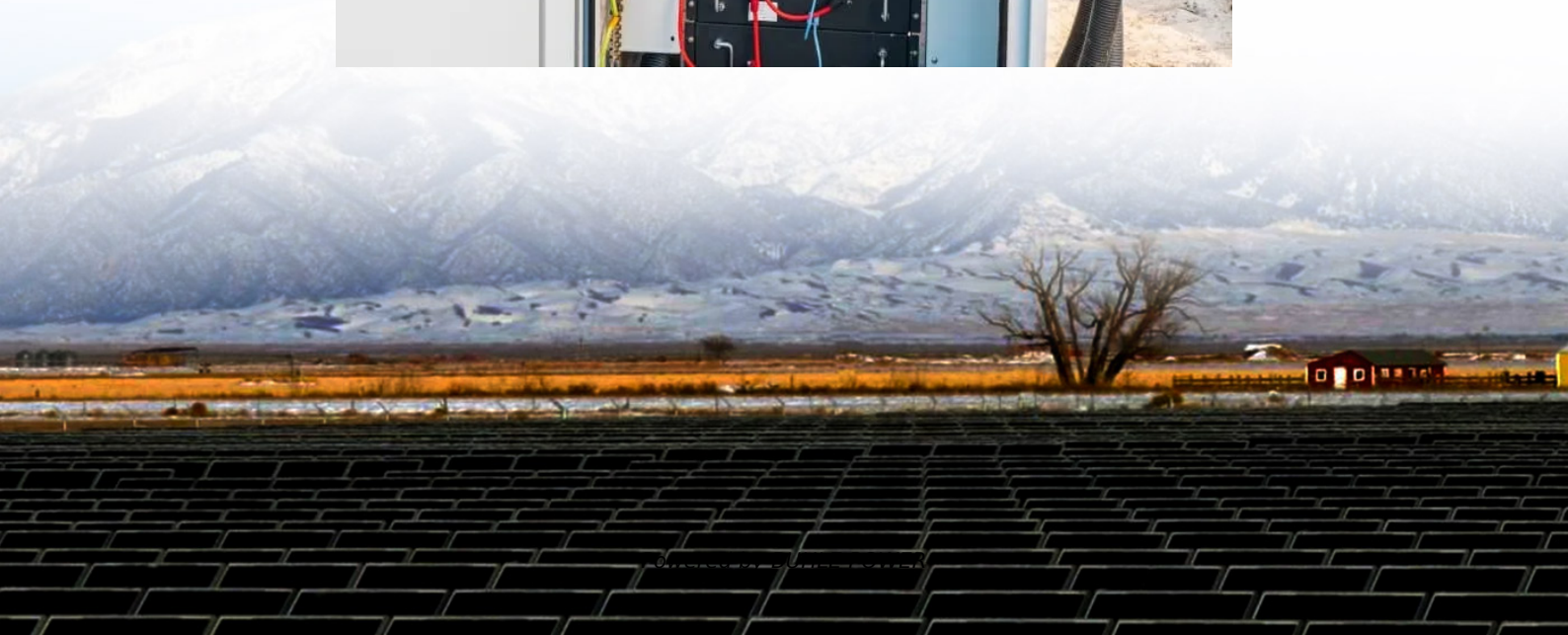


Circuit breaker in substation in Botswana





Overview

What is a circuit breaker in a substation?

A circuit breaker in substation is a key component in electrical power systems, designed to interrupt the flow of electricity when a fault occurs, such as a short circuit or overload. Depending on system design, these devices can operate manually or automatically and come in various types, including air, vacuum, oil, and SF₆ gas.

Do substation circuit breakers comply with ANSI standards?

Substation circuit breakers must comply with national and international reliability and safety standards, such as those set out by the American National Standards Institute (ANSI) or the International Electrotechnical Commission (IEC).

How long does a substation circuit breaker last?

A substation circuit breaker has three critical life stages: initial installation, maintenance and testing, and end-of-life. Following proper procedures at all of these stages will extend the life and enhance the efficacy of your circuit breakers.

What conditions affect a substation circuit breaker?

Substation circuit breakers are often exposed to harsh conditions, including extreme weather, dust, moisture, and temperature fluctuations. Their design must accommodate these conditions in order to maintain function and reliability.



Circuit breaker in substation in Botswana

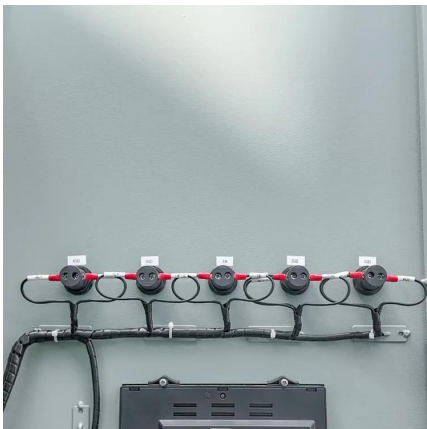


[BW POWER ENGINEERS . Projects](#)

1.Ghanzi 132/11/33kV Substation Extension Works Year: 2019-2020 , Status: Completed, Project Location:Ghanzi, Botswana , Client: Kalpataru Power Transmission Limited (India) Testing and ...

[What is the role of circuit breakers in a substation?](#)

Aug 15, 2025 · Circuit breakers are essential components in a substation, performing critical functions such as protecting against overcurrents, isolating faulty sections, controlling ...



[Substation Components--Part 3: Circuit Breakers](#)

Nov 6, 2025 · Substation Components--Part 3: Circuit Breakers This article explores the crucial role of circuit breakers in substations, covering their fundamental functions, interruption ...

[What is the role of circuit breakers in a ...](#)

Aug 15, 2025 · Circuit breakers are essential components in a substation, performing critical functions such as protecting against overcurrents, ...



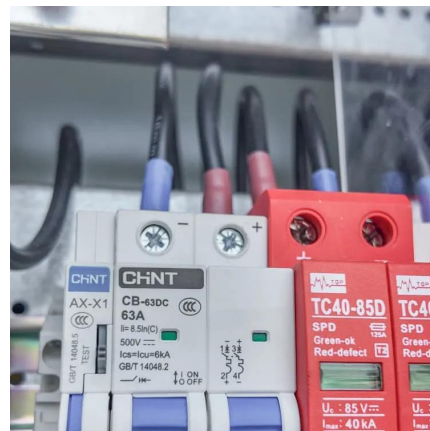
[Different Types of Circuit Breakers in ...](#)

Circuit Breaker in Substation A circuit breaker is a device that interrupts the flow of electricity in an electrical circuit. It is used to protect electrical ...



[Substation Circuit Breakers: Ensuring Power Distribution...](#)

Nov 13, 2024 · This article explores the critical role of substation circuit breakers in safeguarding power distribution systems, enhancing grid reliability, and protecting infrastructure, personnel, ...



[Different Types of Circuit Breakers in Substations](#)

Circuit Breaker in Substation A circuit breaker is a device that interrupts the flow of electricity in an electrical circuit. It is used to protect electrical equipment from damage caused by overloads or ...





[Substation Circuit Breakers: Ensuring Power ...](#)

Nov 13, 2024 · This article explores the critical role of substation circuit breakers in safeguarding power distribution systems, enhancing grid ...



[Circuit Breaker In Substation - Types, ...](#)

Dec 5, 2024 · A circuit breaker in substation systems protects transformers and grid infrastructure by interrupting faults like overloads or short circuits. ...

[Botswana Govt Tender for Supply, Delivery, Installation....](#)

BOTSWANA POWER CORPORATION has floated a tender for Supply, Delivery, Installation, Testing and Commissioning and of 132Kv High Voltage Circuit Breakers in Jwaneng & ...



[Circuit Breaker In Substation - Types, Protection And Safety](#)

Dec 5, 2024 · A circuit breaker in substation systems protects transformers and grid infrastructure by interrupting faults like overloads or short circuits. Learn how they work, their types, ...



OCEF Engineering Botswana

Oct 8, 2024 · Elle & B Investments (PTY)LTD trading as OCEF Engineering Botswana is a Botswana Company owned by 100% Botswana Citizens with an entrenched and loaded ...



Electrical Substation Equipment: Circuit Breaker and Its ...

Nov 12, 2025 · Functions of Circuit Breaker in Electrical Substations Circuit breakers play a crucial role in electrical substations, which are key components of power systems. Their primary ...

Contact Us

For technical specifications, project proposals, or partnership inquiries, please visit:
<https://www.bukhobuhle.co.za>

Scan QR Code for More Information



<https://www.bukhobuhle.co.za>